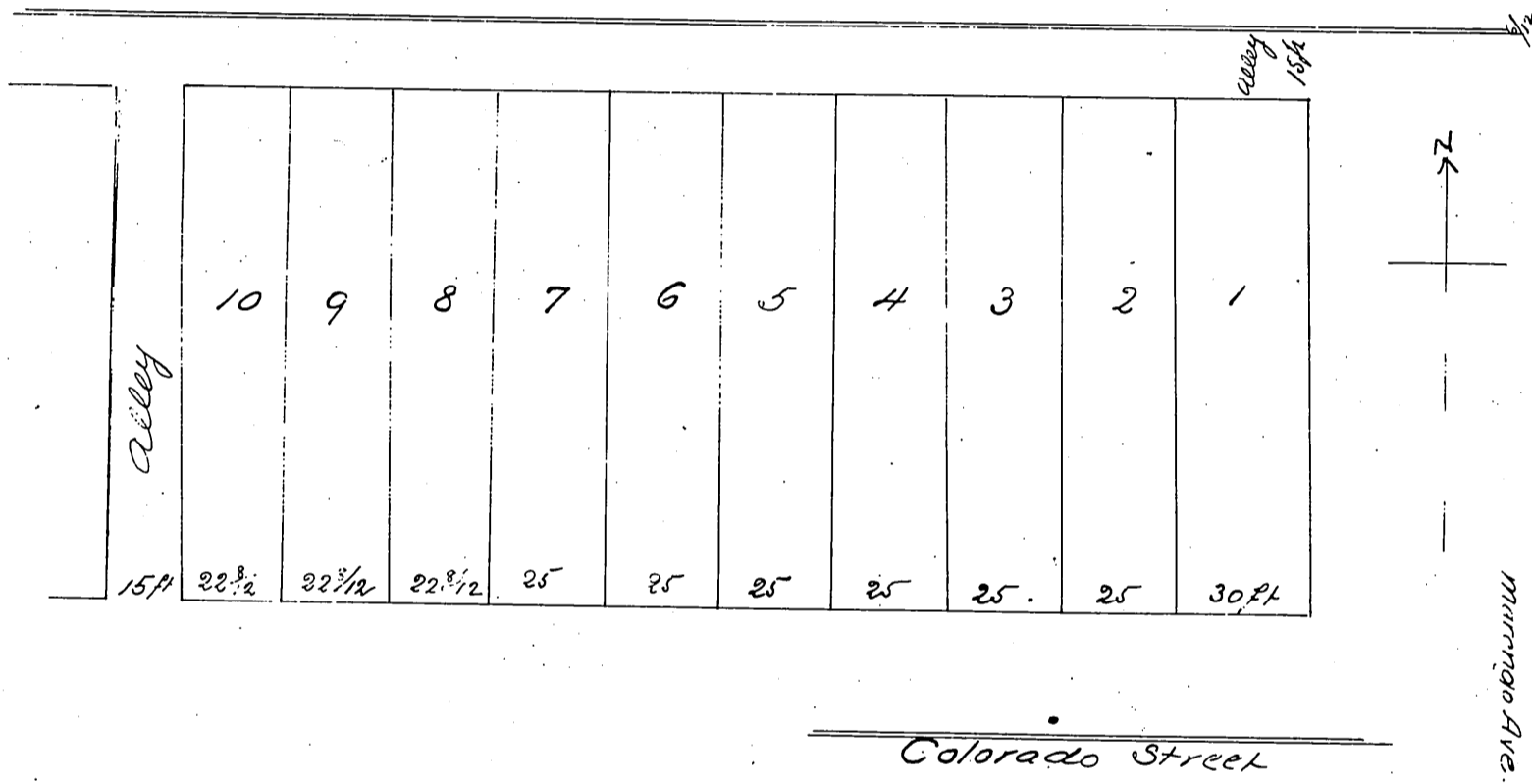


Map  
 OF  
 Frost's Subdivision  
 of  
 Lots N<sup>o</sup> 6<sup>th</sup> & 7 of Bunnells Subdivision of Lot N<sup>o</sup> 13  
 Block B San Pasqual Tract.  
 L.V.L. + W. Assn.  
 Pasadena Cal  
 Scale 20ft to 1 in.



A full true and correct copy of the original (reduced to scale  
 of 40 feet to one inch) recorded October 27<sup>th</sup> 1887 at 31 min  
 past 2 P.M. at request of E. S. Frost  
 Frank A. Gibson County Recorder  
 by George Langue Deputy