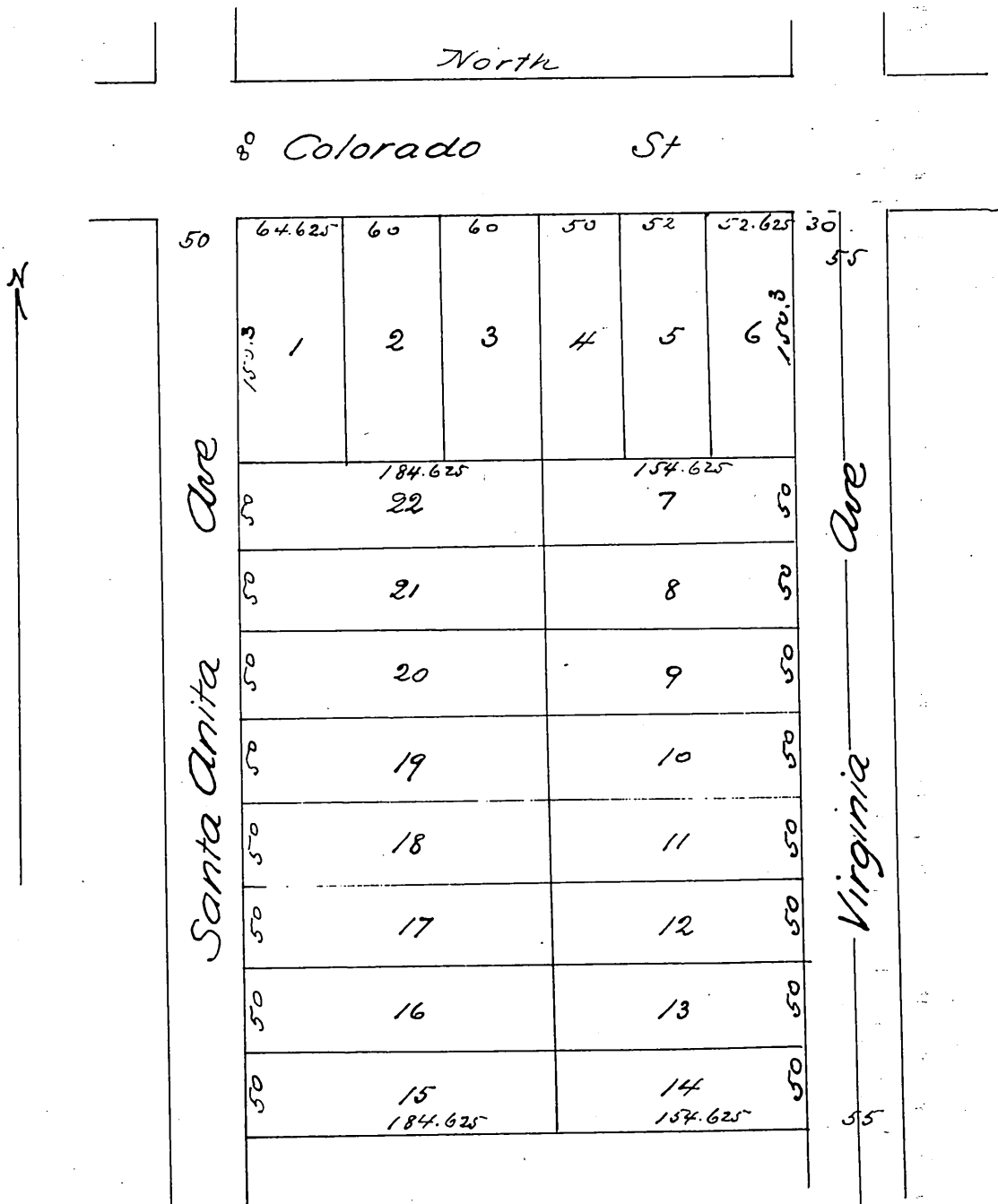


Aspinall & Becker's Subdivision

of Lot 3 Block 17 Lamanda Park
Los Angeles Co Cal.

Surveyed by Mount & Drummond Oct 1887

Scale 100 feet to 1 inch



A full, true and correct copy of the original recorded
 Oct 29. 1887 at 9⁴⁴ A.M. at request of A. Becker
 Frank A. Gibson Co. Recorder
 by Wm. E. Johnston Deputy