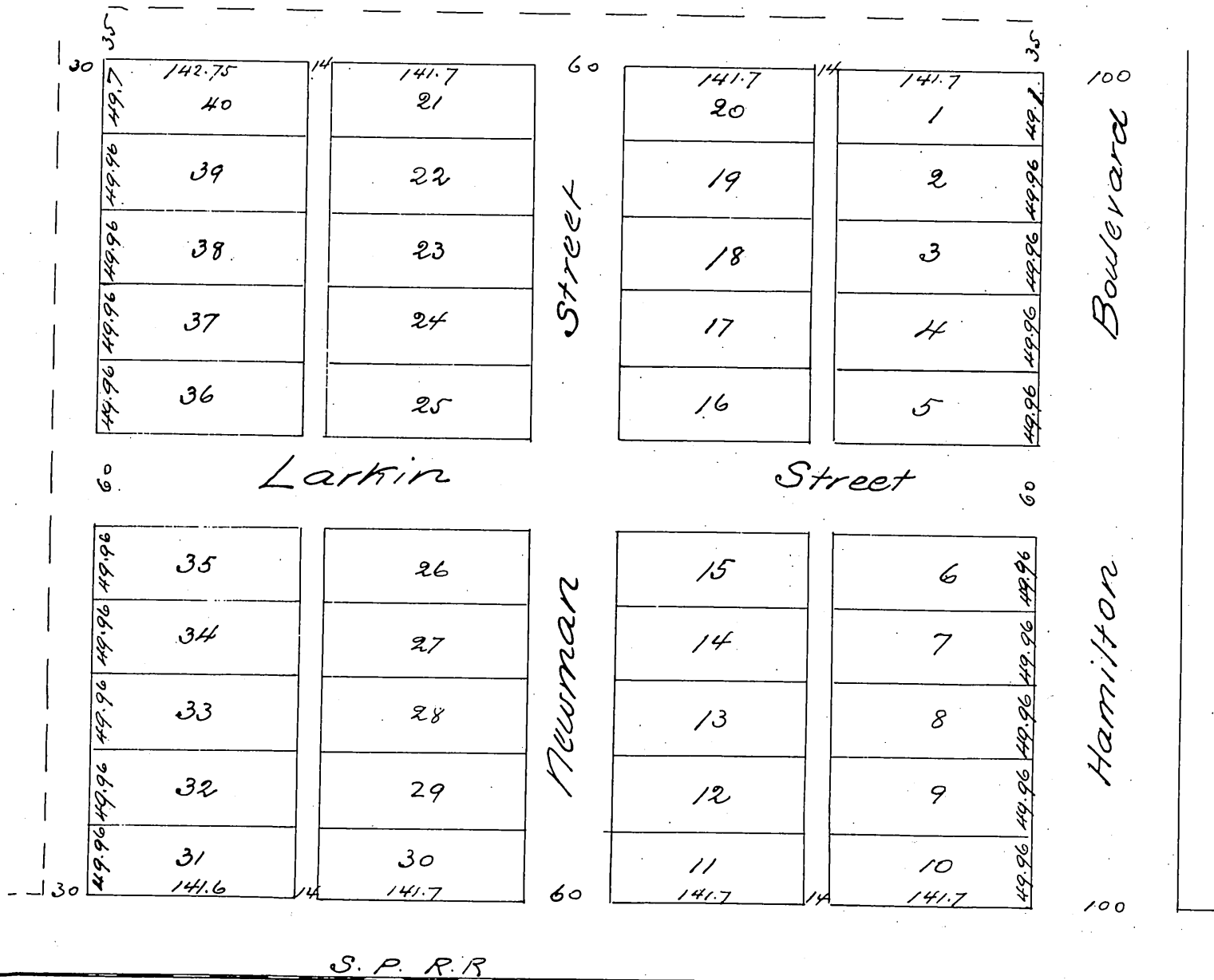


Map
 OF
 Newman's Subdivision
 of the
 South East quarter of Block 220
 Pomona Tract
 Surveyed in Sept 1887 by H.E. Stoddard C.E.
 Scale 50 ft to 1 inch.



A full true and correct copy of the original (reduced to
 the scale of 100 feet to one inch) recorded Oct 29 1887 at
 33 Min past 12 m at request of Frank P. Firey.
 Frank A. Gibson Co Recorder
 by Wm. S. Johnson Deputy