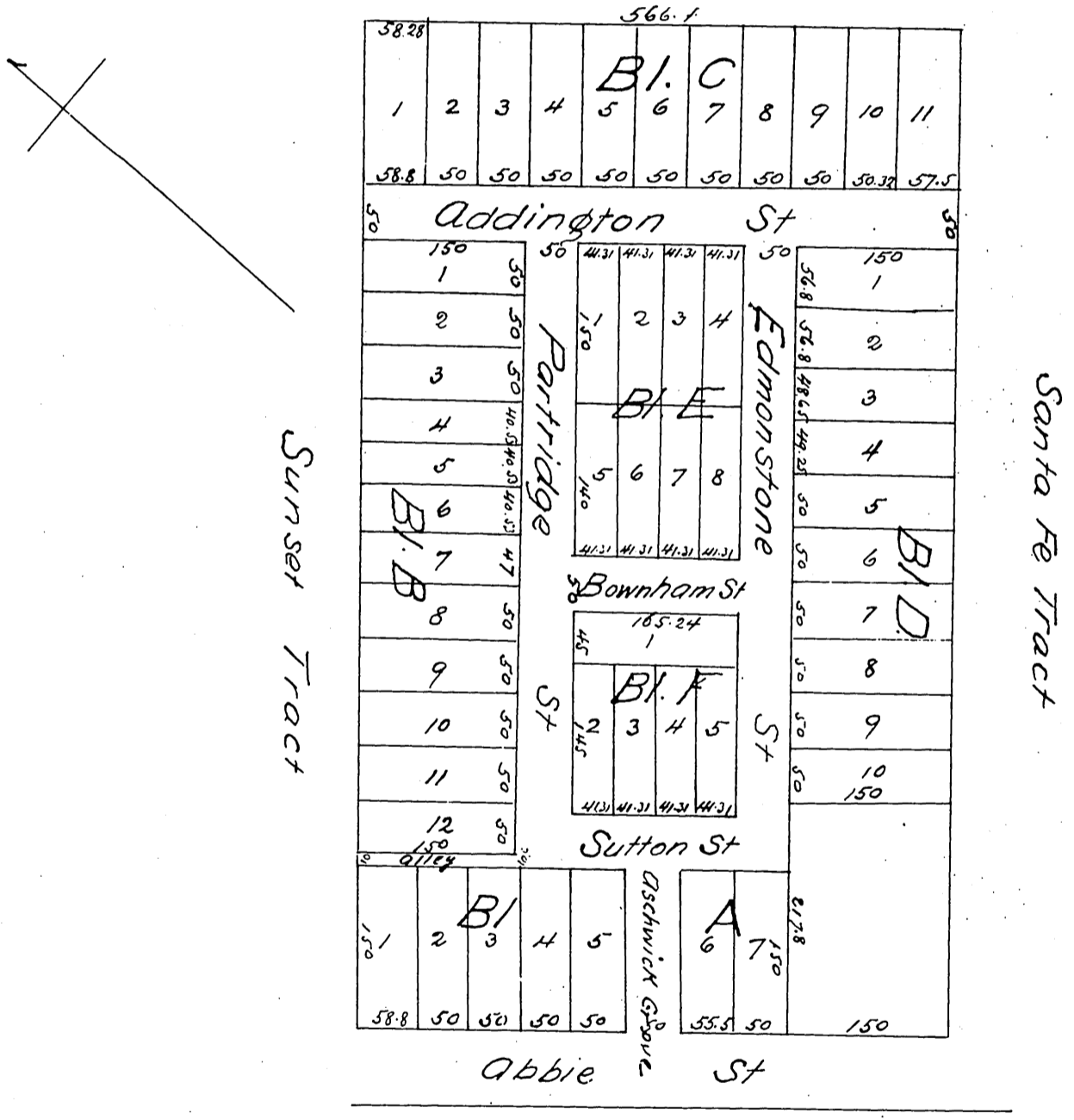


Map OF THE Strachey Tract

Being a Subdivision of Block N^o 14
Lucas Tract Santa Monica
Surveyd July 1887
Scale 50 ft. = 1 inch



A full true and correct copy of the original (reduced one third size) recorded
October 31, 1887 at 1:42 P.M. at request of Geo Strachey
Frank A Gibson County Recorder
by Wm E Johnston Deputy.