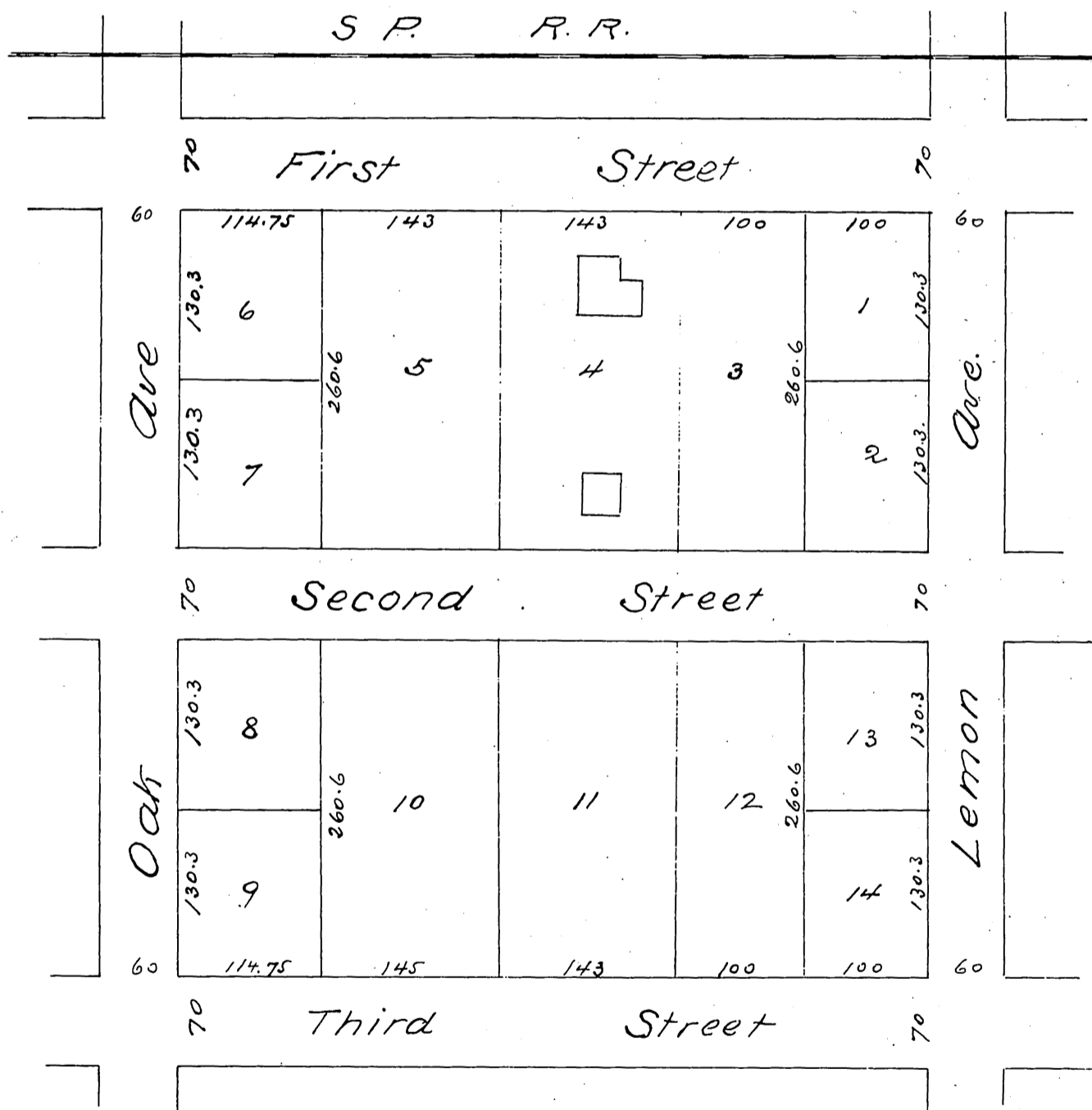


Map  
 OF  
 John Seitz's Subdivision  
 of the  
 Northeast quarter of Block 224  
 Pomona Tract

Surveyed in Aug 1887 by H. E. Stoddard C. E.

Scale 50 ft to inch



A full true and correct copy of the original (reduced to  
 the scale of 120 feet to one inch) recorded Nov 11<sup>th</sup> 1887  
 at 8<sup>55</sup> am at request of John Seitz

Frank A. Gibson Co Recorder  
 by Wm E. Johnston Deputy.