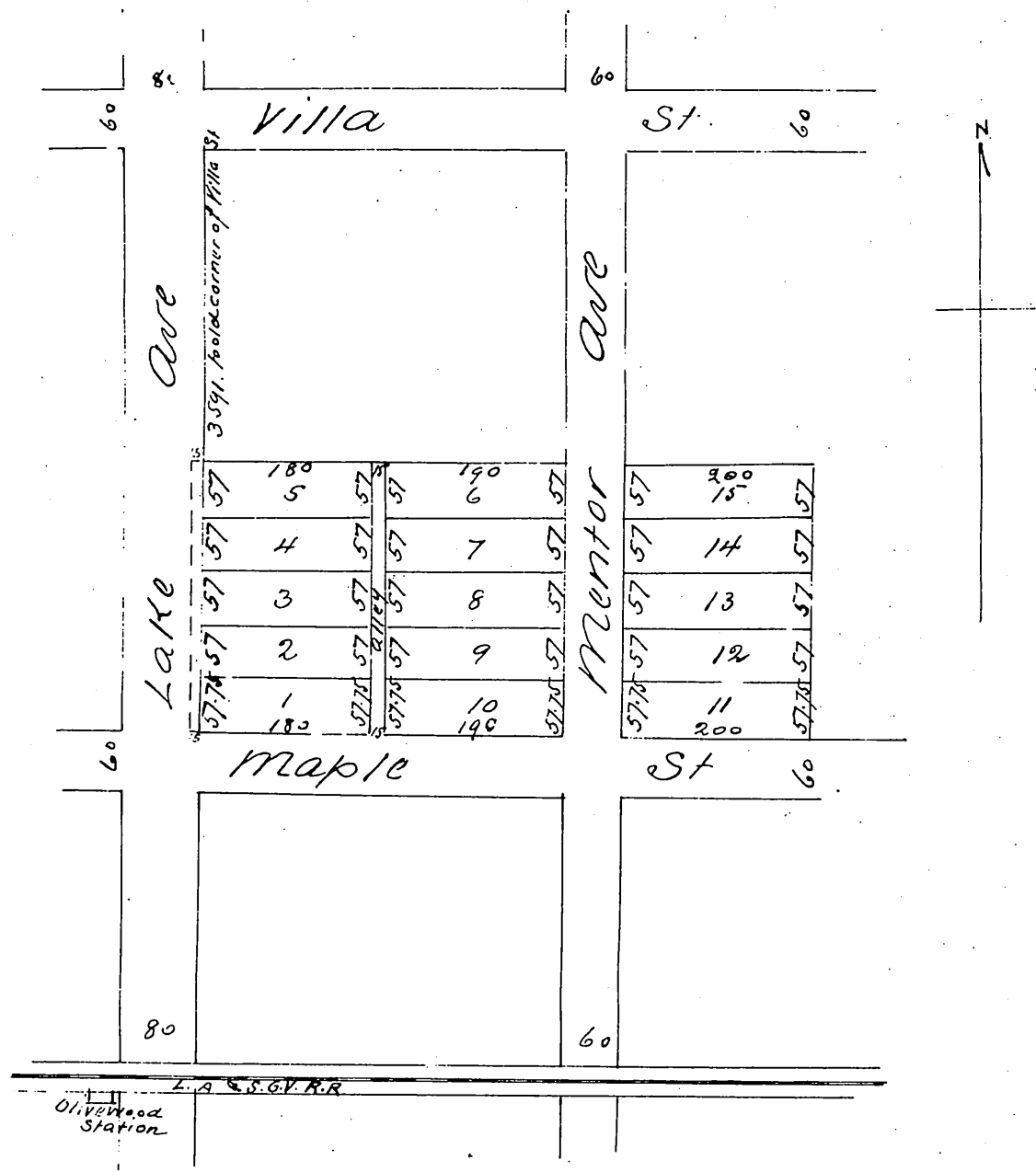


Map
 OF
 Lewis B Reed's Subdivision
 of Lots 1 & 2 and the North 1/2 of 3 & 4 Block 9
 Known and designated on the map of
 Olivewood and recorded in Book 7
 page 17 Misc Records
 Los Angeles Co Calif
 Surveyed Sept 1887 by Place & Pieper Surveyors & C. & S.
 Scale 60' = 1 inch



A full true and correct copy of the original (reduced to one third) recorded
 November 3rd 1887 at 11:16 A.M. at request of Lewis B. Reed
 Frank A. Gibson Co Recorder
 by George Bugbee Deputy