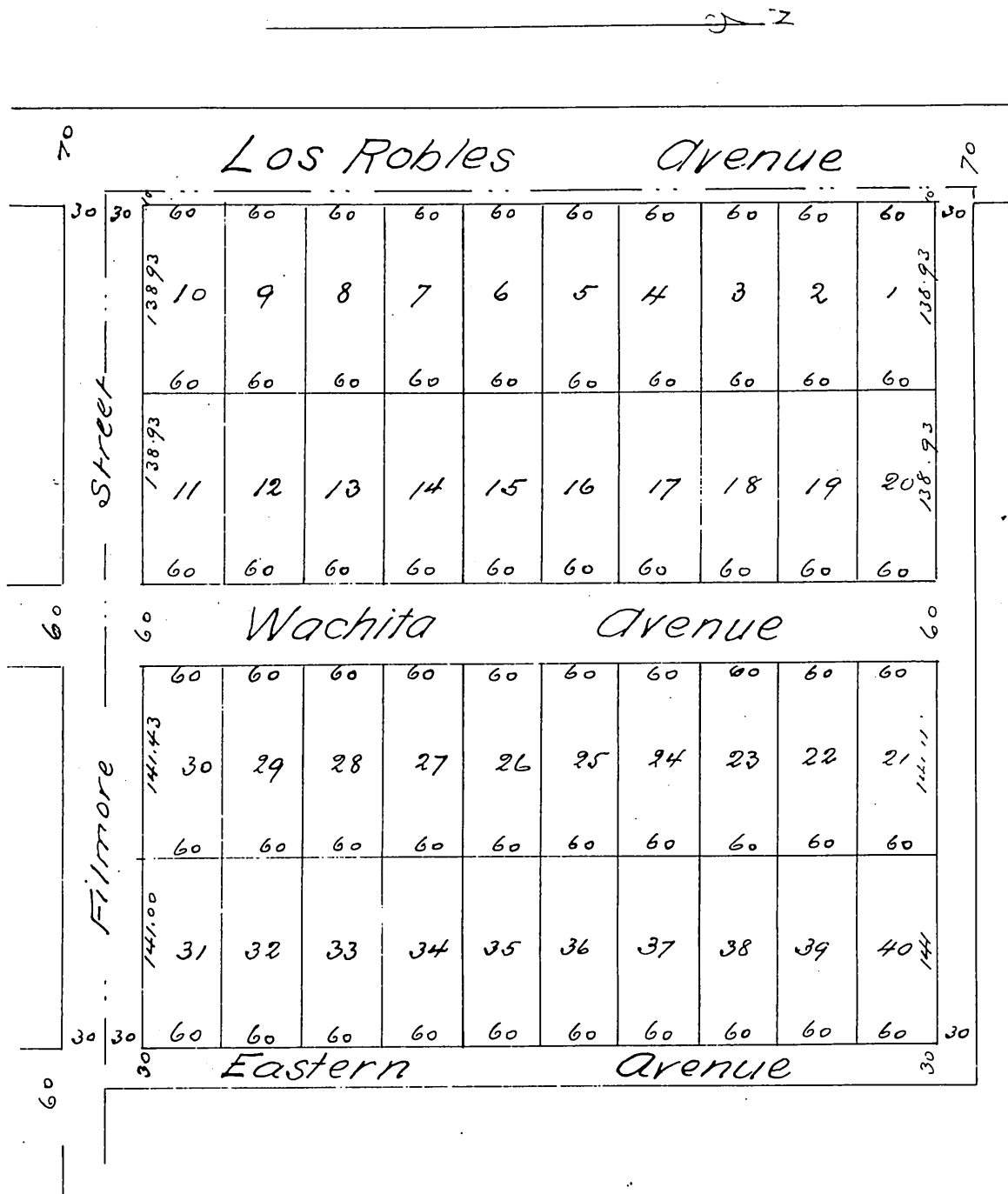


Map
of the
Webster Bushnell and Jones Subdivision

Being a Subdivision of lot 4 Block P
San Pasqual Tract
Lands of the L. V. L. and W. Association
Surveyed by Willard & Miller Oct 22nd 1887
Scale 60 feet 1 inch



A full true and correct copy of the original (reduced to 120 ft to one inch)
recorded Nov 3rd 1887 at 2³⁵ P.M. at request of E. C. Webster
Frank A. Gibson County Recorder
by George Bugbee Deputy