

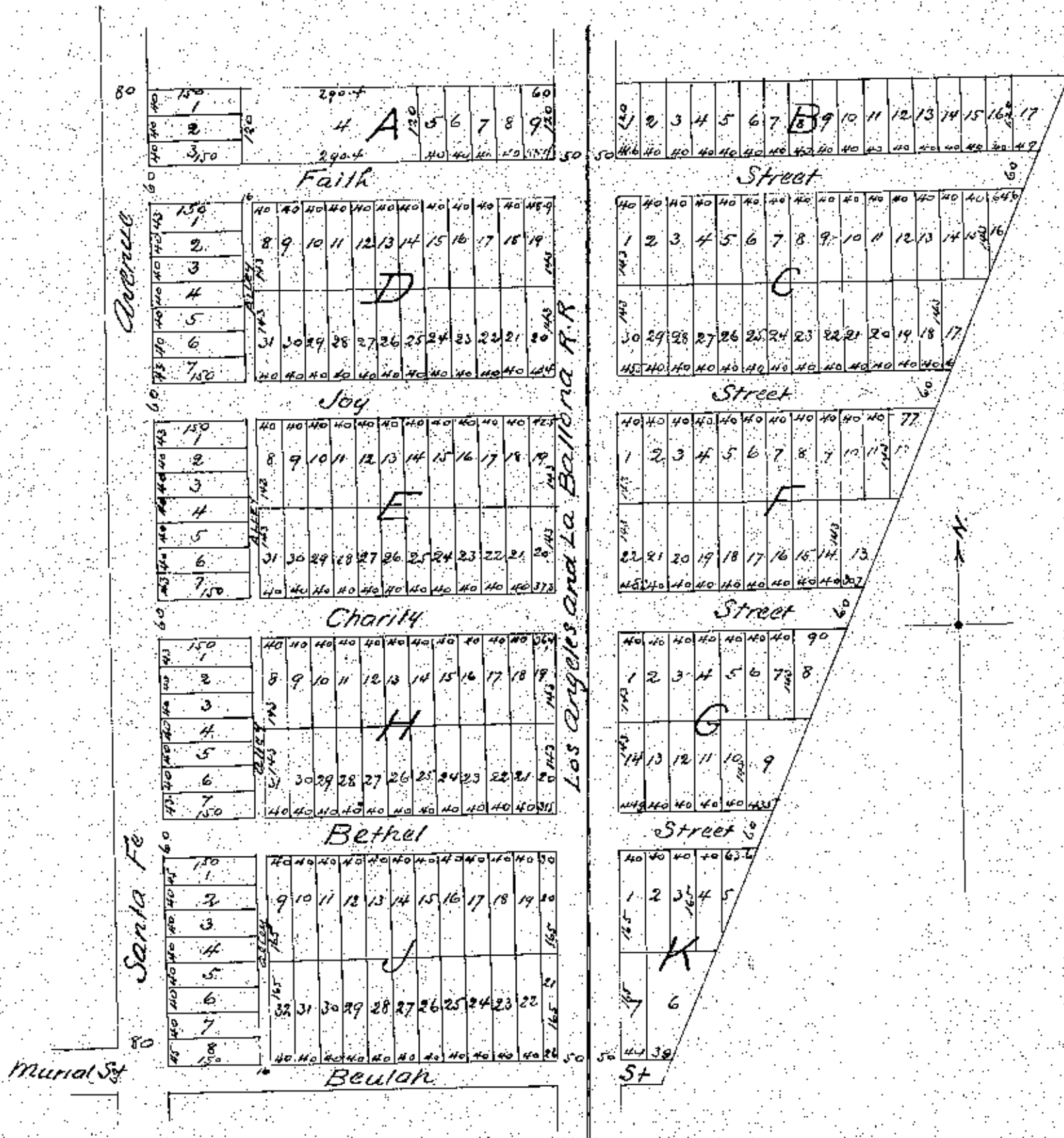
Map OF THE Day Star Tract

Clement and Gays Subdivision

of 43 acres on the East boundary of Sect 10 Tr. 2 S. Rg. 13 W. S.B.M.
of which 28 acres is in the North portion of the Glassell, Chapman
& Smith's second allotment and 14 acres adjoin immediately
to the North thereof in Los Angeles Co. Cal.

Surveyed by C. Elliott C.E. November 1887.

Scale 100 ft to the inch



A full true and correct copy of the original
reduced to an exact one-half size recorded November 7th 1887 at 1³⁰
P.M. at request of Clement and Gay
Frank A. Gibson Co. Recorder
by Geo. Baughen Deputy