

257

# Plan

OF THE

## Hirshfeld Tract

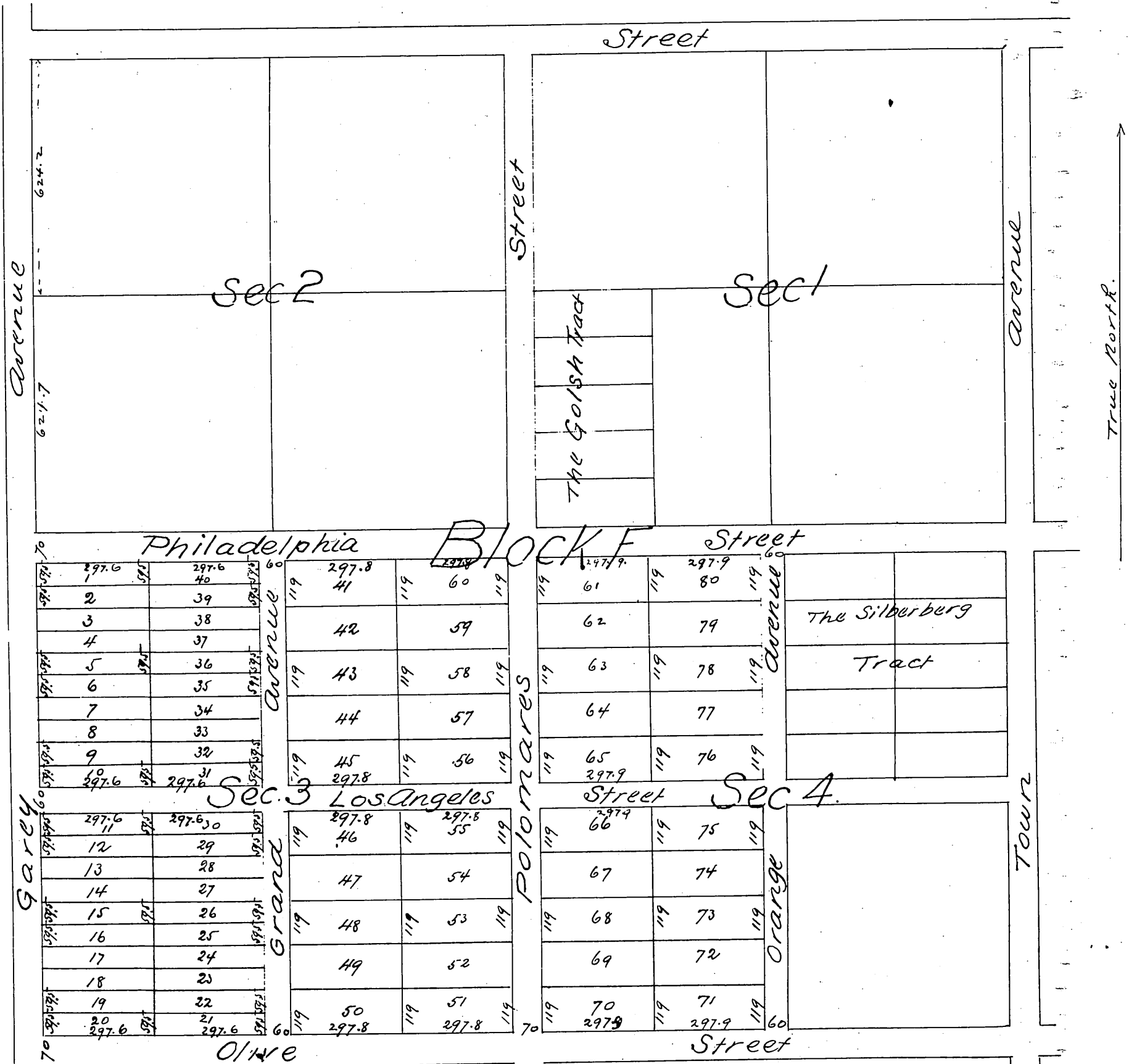
Being a Subdivision of Sections 3 and Western Half of Section 4 Block F of Map No. 1  
of a portion of Phillips Addition to the

### TOWN OF POMONA

Recorded in Book 17 page 94 Miscellaneous Records of  
County of Los Angeles

Surveyed by E. N. Willberg C.E.

Scale 200 feet to 1 inch



a true full and correct copy of the original  
(reduced to 300 feet to 1 inch) recorded November  
8th 1887 at 3:40 P.M. at request of R. Thorne.  
Frank A. Gibson Co Recorder  
by Geo. Bugbee Deputy