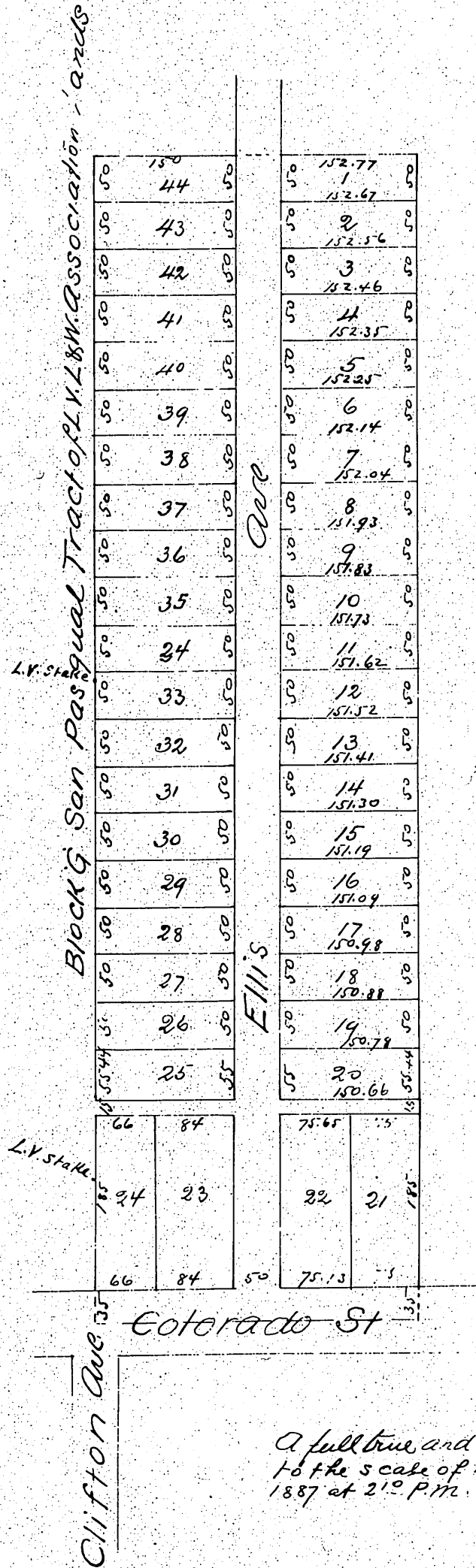




J. Ellis
 Colorado Street Subdivision
 Being a part of the A. B. Morgan Tract
 Pasadena Cal

Surveyed Oct. 1887 by Placer & Peper Surveyors & Civil Engineer

Scale 80' = 1"



A full true and correct copy of the original (reduced to the scale of 150 feet to one inch) recorded Nov. 10th 1887 at 2:10 P.M. at request of J. Ellis.
 Frank A. Gibson Co. Recorder
 by George Ruggie Deputy