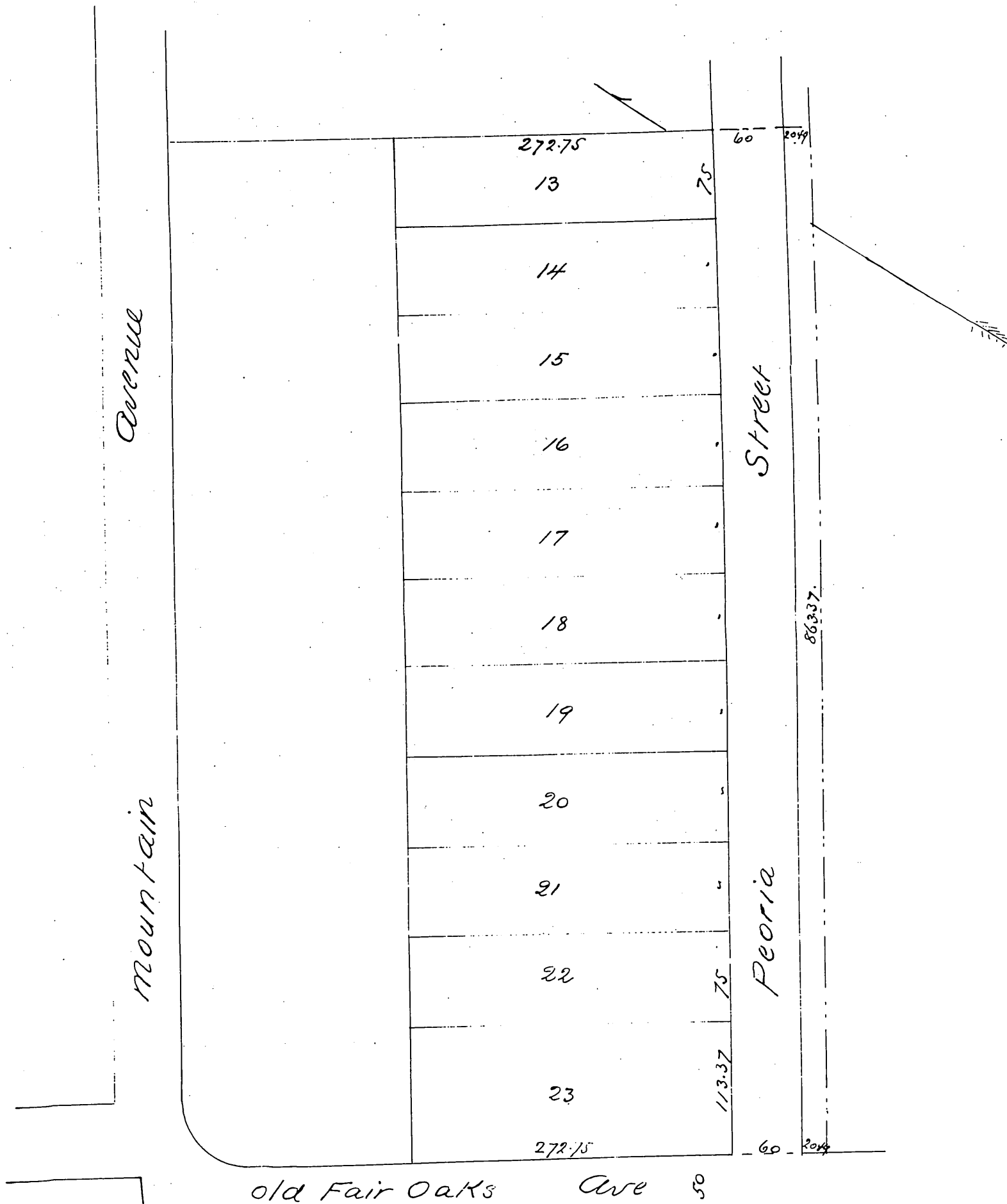


# Plat of Subdivision

of portion of land marked 7ars on plat of subdivision  
of E. Turner's Tract recorded in Book 6 page 180 Miscel.  
Records of Los Angeles Co Cala

Cambell & Marshall Draughtmen  
Scale 100ft=1inch



a full true and correct copy of the original  
recorded Nov 11<sup>th</sup> 1887 at 9<sup>32</sup> A.M. at request of E Turner  
Frank A Gibson County Recorder  
by Geo. Bungee Deputy