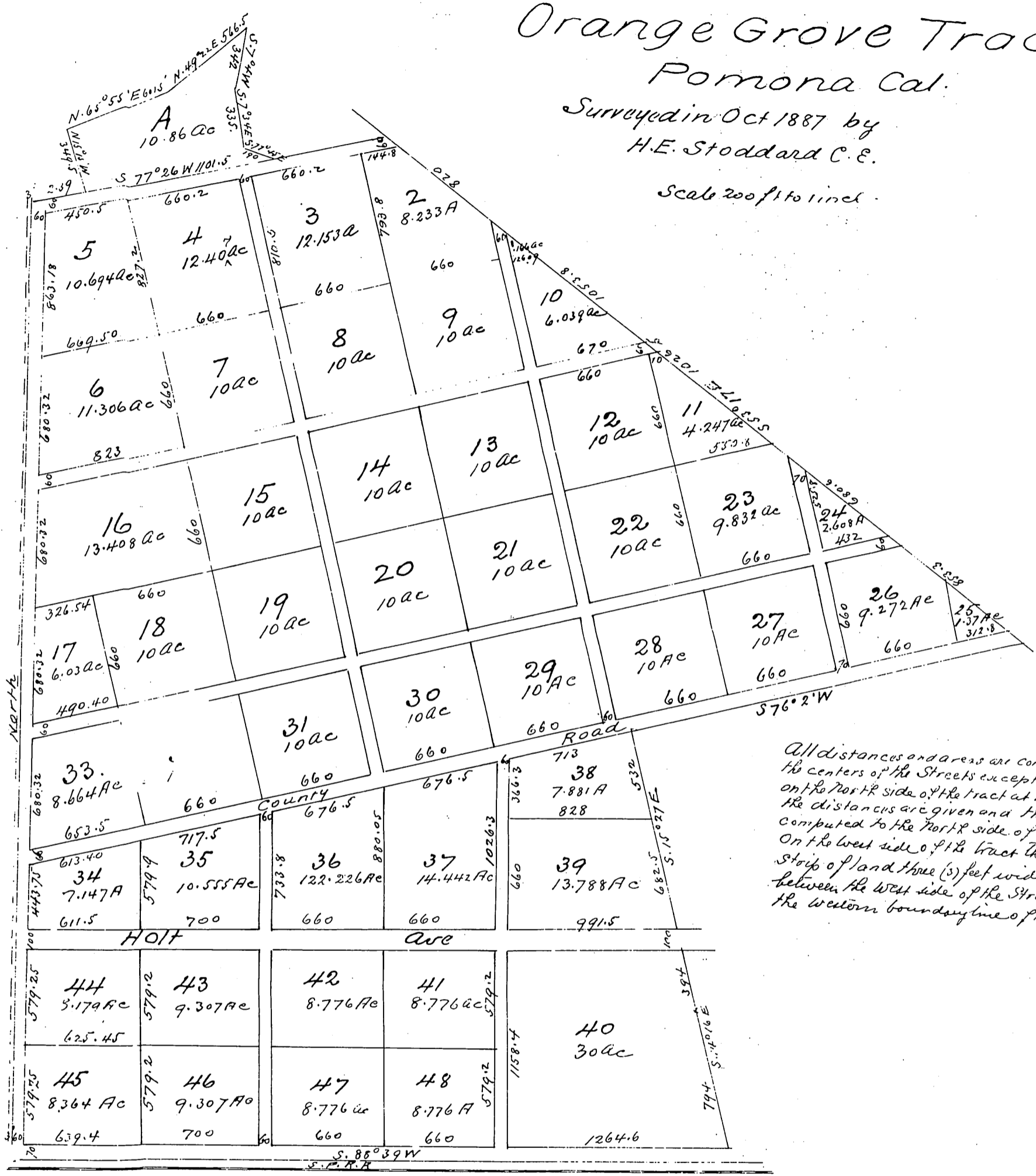


Map of J. E. Packard's Orange Grove Tract. Pomona Cal.

Surveyed in Oct 1887 by
H. E. Stoddard C. E.

Scale 200 ft to inch



All distances and areas are computed to the centers of the Streets excepting the Street on the North side of the tract at which the distances are given and the areas computed to the North side of the Street. On the west side of the tract there is a strip of land three (3) feet wide reserved between the west side of the Street and the western boundary line of the tract.

A full true and correct copy of the original (reduced one third) recorded Nov. 11 1887 at 44 min past 10 a.m. at request of J. E. Packard

Frank A. Gibson County Recorder
by George R. Hughes Deputy

Pomona December 19 1887
Appendix to Map of J. E. Packard's Orange Grove Tract Pomona filed for record Nov 11th 1887 in Book 25, page 84 Los Angeles Co Records
The names of the Streets running through the above mentioned tract are as follows:
Between lots 10, 12, 22, 28 and lots 2, 9, 13, 21, 29 - Washington Avenue
Between lots 3, 5, 14, 20, 30 and lots 4, 7, 15, 19, 31 - Park Avenue
Between lots 6, 7, 8, 9, 10 and lots 11, 12, 13, 14, 15, 16 - Elwood Avenue
Between lots 17, 18, 19, 20, 21, 22, 23 and lots 27, 28, 19, 30, 31, 32, 33 - Arroyo Avenue
Between lots 27, 28, 29, 30, 31, 32, 33 and lots 34, 35, 36, 37, 38 - San Bernardino Ave.
Between lots 38, 39, 40 and lots 37, 41, 48 - Orange Avenue
Between lots 36, 42, 47 and lots 35, 43, 46 - Union Avenue
Avenue West of lots 5, 6, 16, 17, 33, 34, 44 and 45 - Grand Avenue
Avenue North of lots 2, 3, 4 and 5 - Evergreen Avenue

John E. Packard