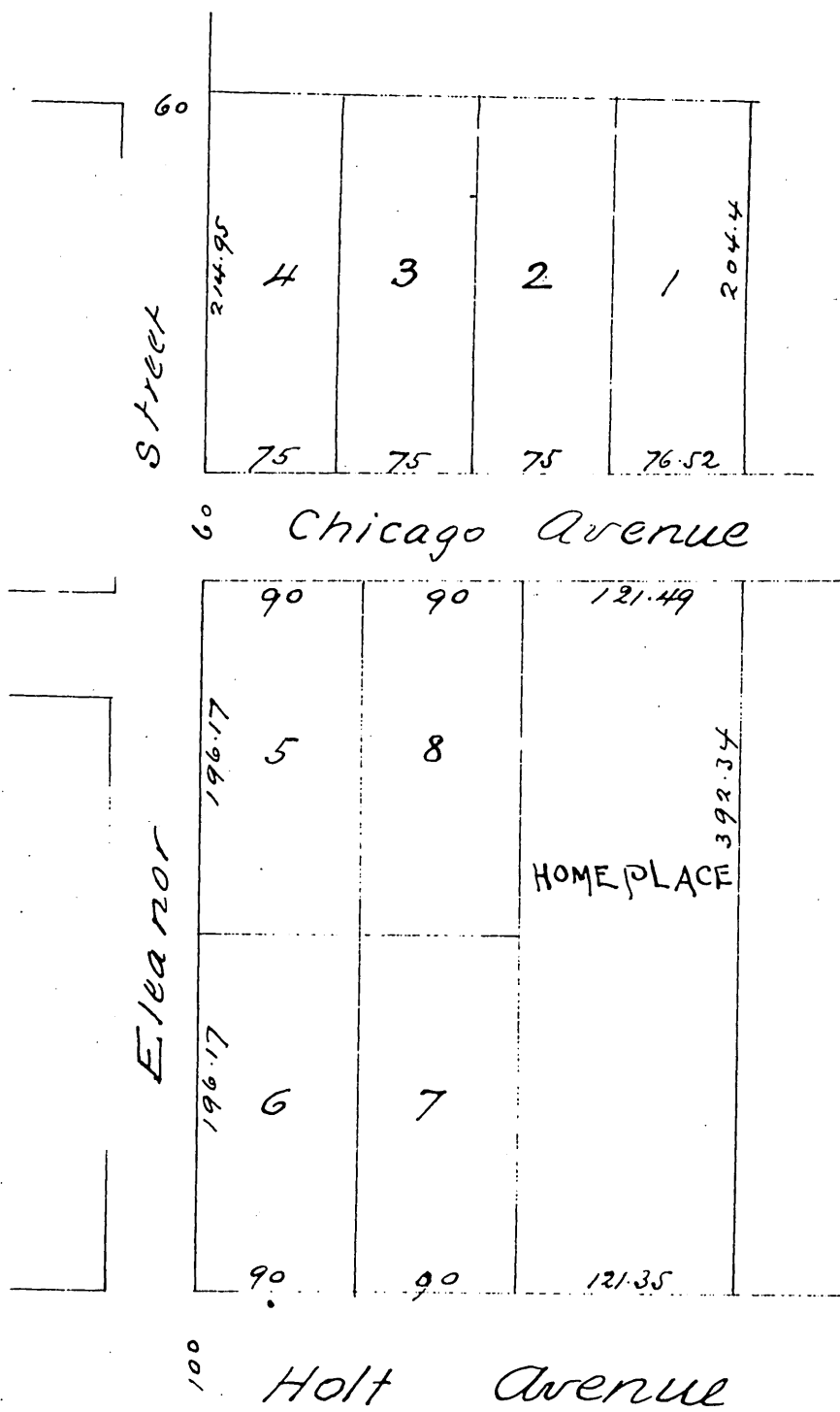


Map  
of  
N. E. Strong's Subdivision  
of Lot 2 Block 178  
Town of Pomona Cal  
Jas T. Taylor & Co Surveyors  
Oct 1887.  
Scale 50ft-1in



a full true and correct copy of the original  
reduced to the scale of 100 feet to 1 inch, recorded  
Nov. 11. 1887 at 1042-a. 9m at request of Jas T. Taylor  
Frank A. Gibson Co Recorder  
by Geo. Bugbee Deputy