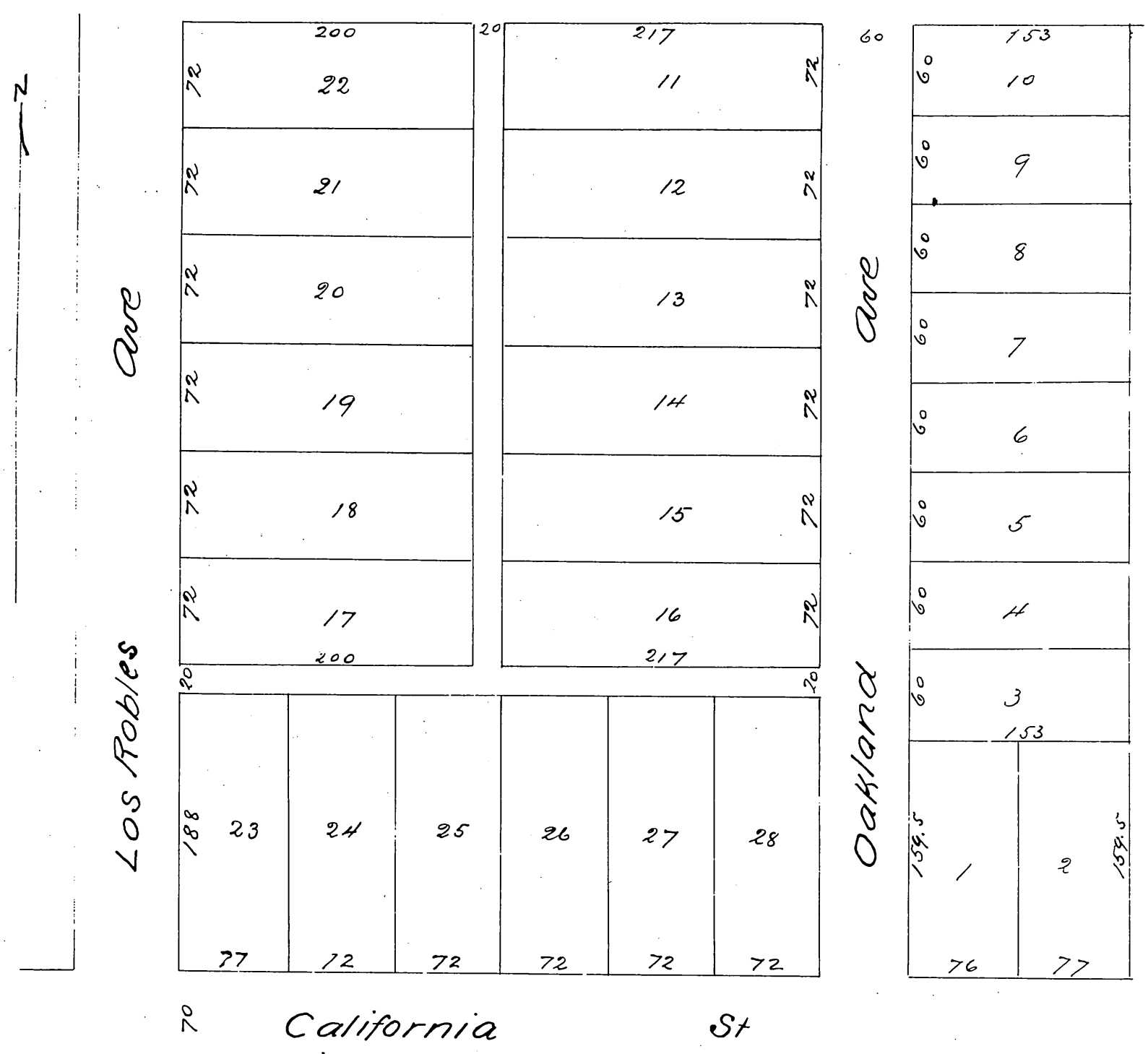


C.M. & M.E. Parker's Subdivision
of
Lot 12, Block J San Pasqual Tract
of the
Lands of the Lake Vineyard Land & Water Association
Pasadena Cal.

Riggins & Jessup Surveyors
Scale 60 feet to 1 inch



a full true and correct copy of the original reduced to the scale of 150 feet to one inch, recorded November 12th 1887 at 8⁵⁸ A.M. at request of C.M. Parker

Frank A. Libson Co. Recorder
by Geo. Bugbee Deputy