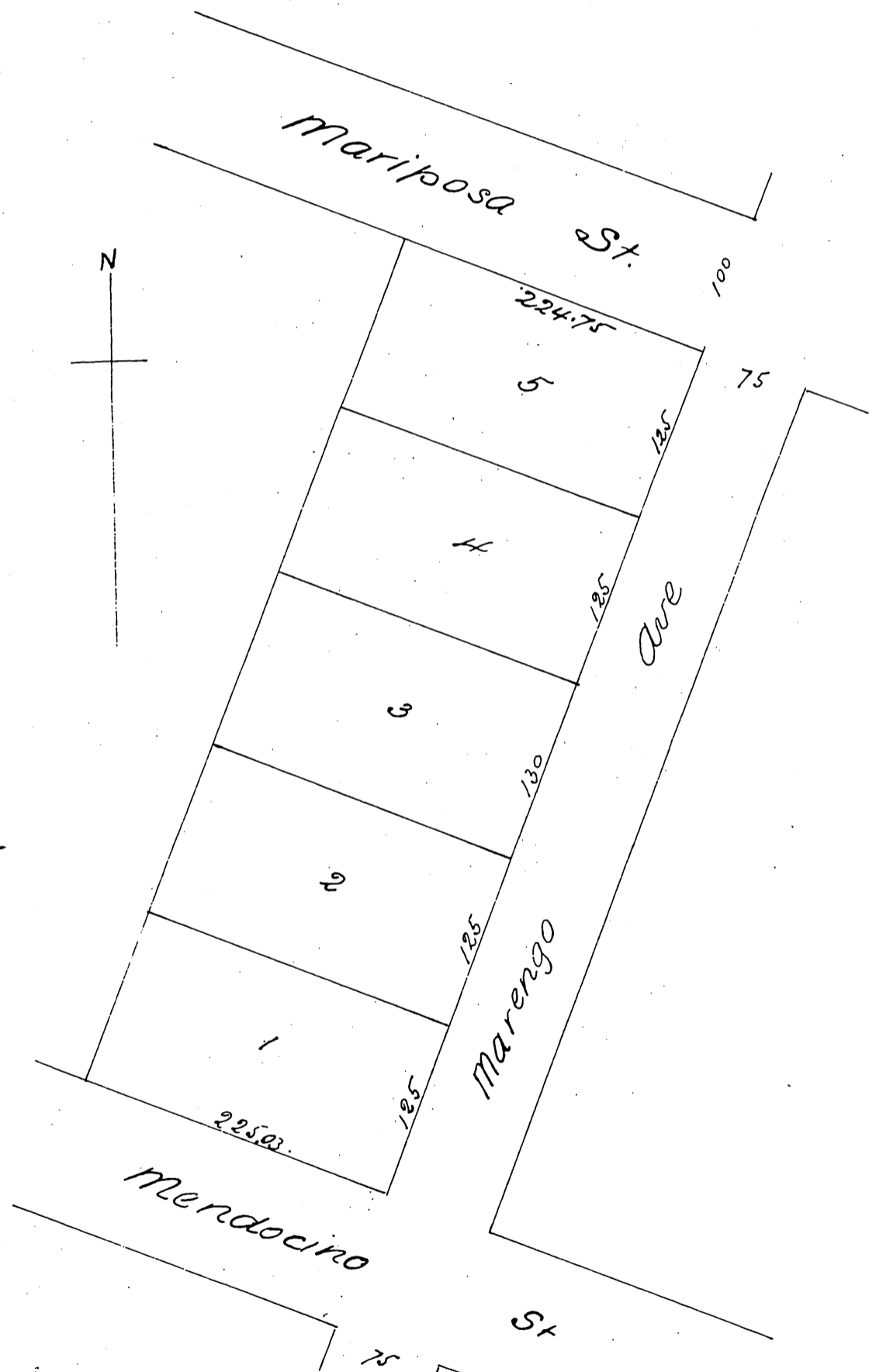


The
 Jordan Subdivision
 of
 Lots 7, 8, 9 & 10 Block 26
 Altadena Tract Pasadena Cal.
 Surveyed by Jessup Reece
 Scale 100 feet to 1 inch



a full true and correct copy of the original
 recorded Nov. 14. 1887 at 8.51 a.m. at request of
 W. G. Benedict Frank A. Gibson Co Recorder
 by George Bugbee Deputy