

in Book 25 page 25 Wright Surveyor do hereby certify that the map of the Kuhrts Bridge Tract recorded were made by page 93 of Miscellaneous records of Los Angeles County under my direction and that clerical error by by lot 34 in said Block is designated as lot 41 on said map. all other numbers is 40 length is 121.08 feet

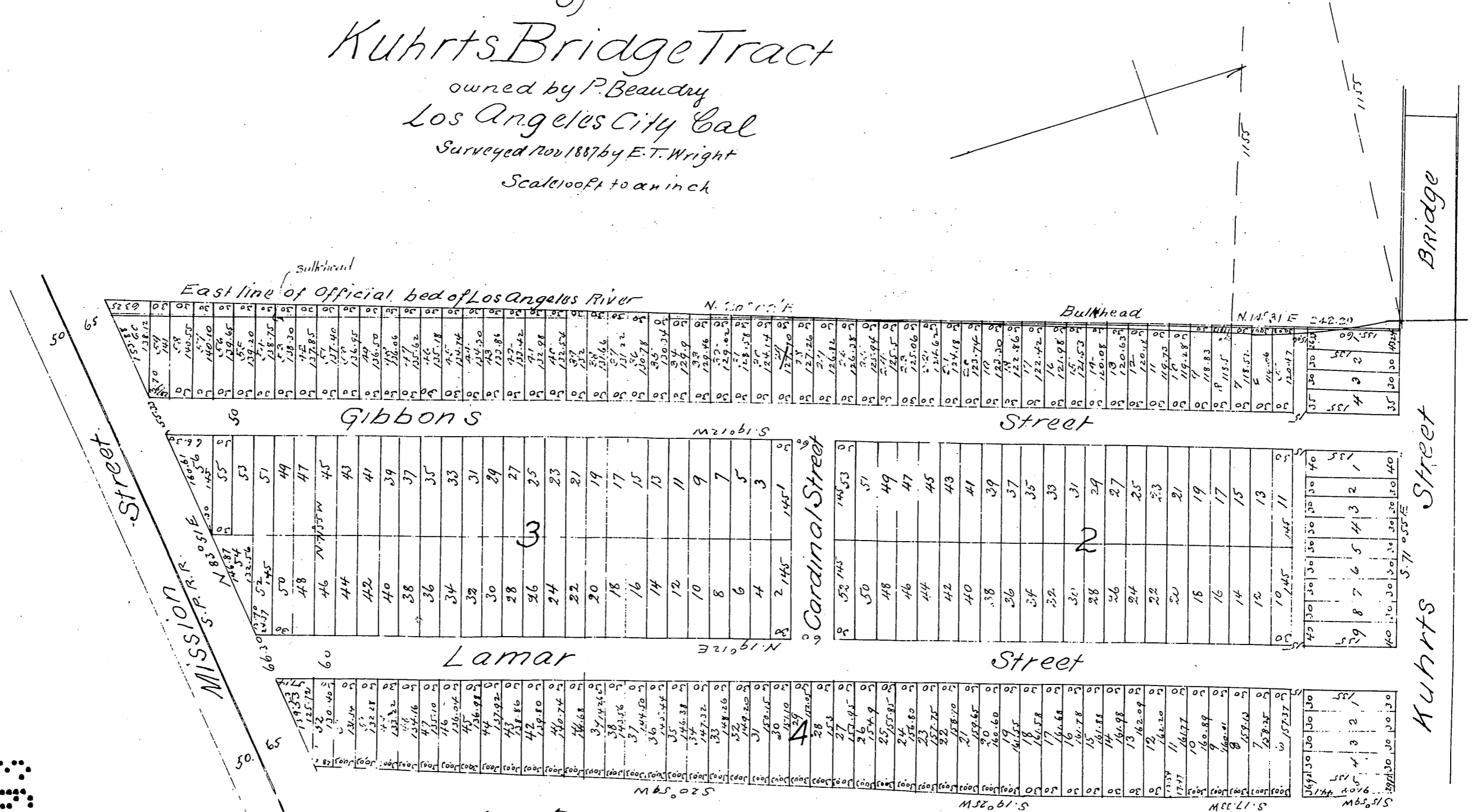
Los Angeles Cal February 1. 1888

E. T. Wright



Map of Kuhrts Bridge Tract

owned by P. Beaudry
Los Angeles City Cal
Surveyed Nov. 1887 by E. T. Wright
Scale 100ft to an inch



A full true and correct copy of the original reduced to two thirds size) recorded Nov. 14 1887 at 11:26 A.M. at request of P. Beaudry.

Frank A. Gibson Co. Recorder
by George Bugbee