

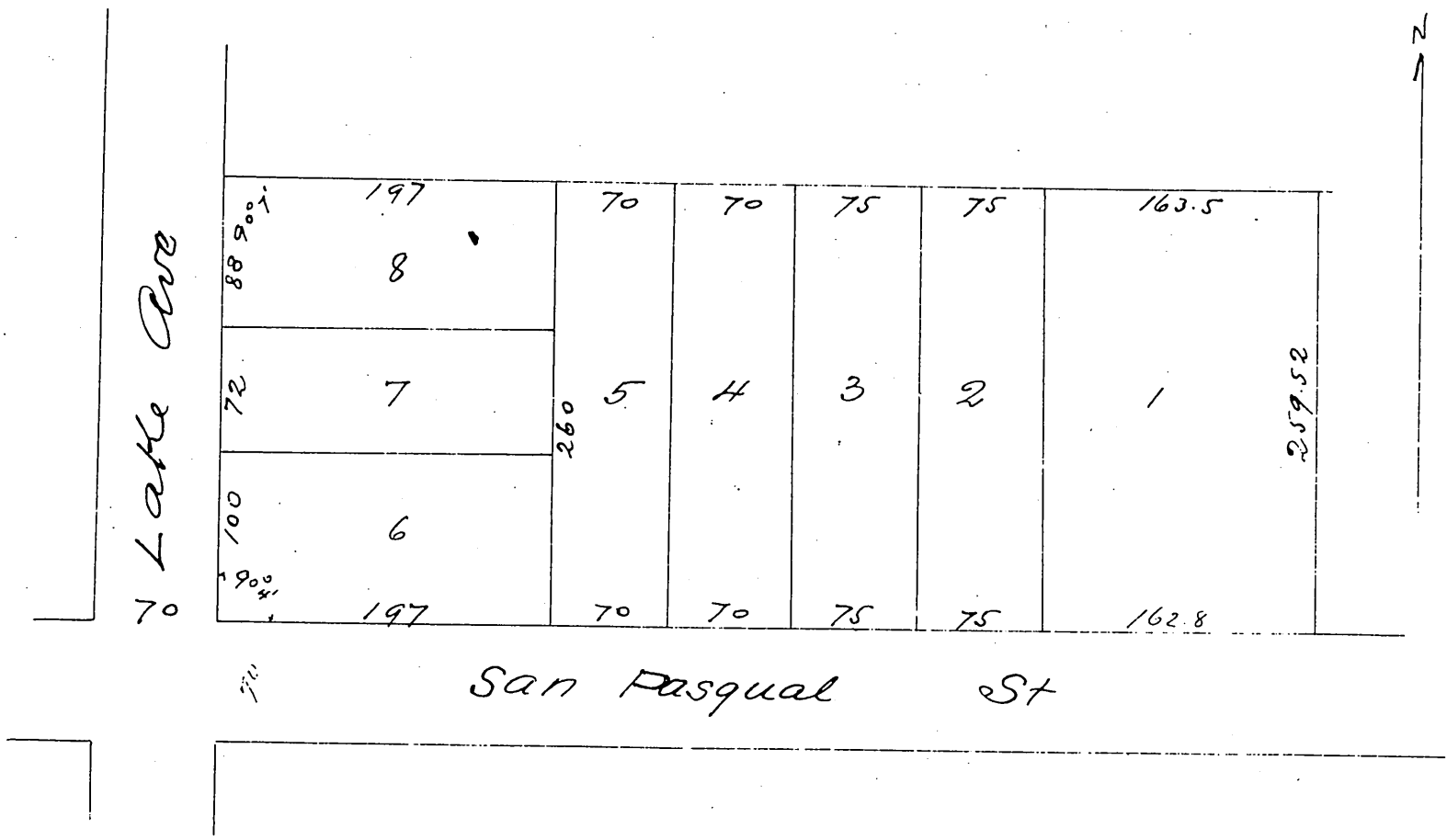
# Dr Eliots Home Tract

a Subdivision of 4.32 acres being all of the  
South half of Lot No 9 Block L  
except a strip 45 feet wide off the South side

## San Pasqual Tract

as shown on a map of said tract recorded in Book K3  
page 315 Misc. Records of Los Angeles County Cal  
Surveyed by Mount & Dimmond  
Oct 1887

Scale 70 feet to 1 inch



A full true and correct copy of the original (reduced to the  
scale of 100 feet to one inch) recorded November 15 1887  
at 11 13 AM at request of J. W. Eliot

Frank A. Gibson County Recorder  
by George Bugbee Deputy