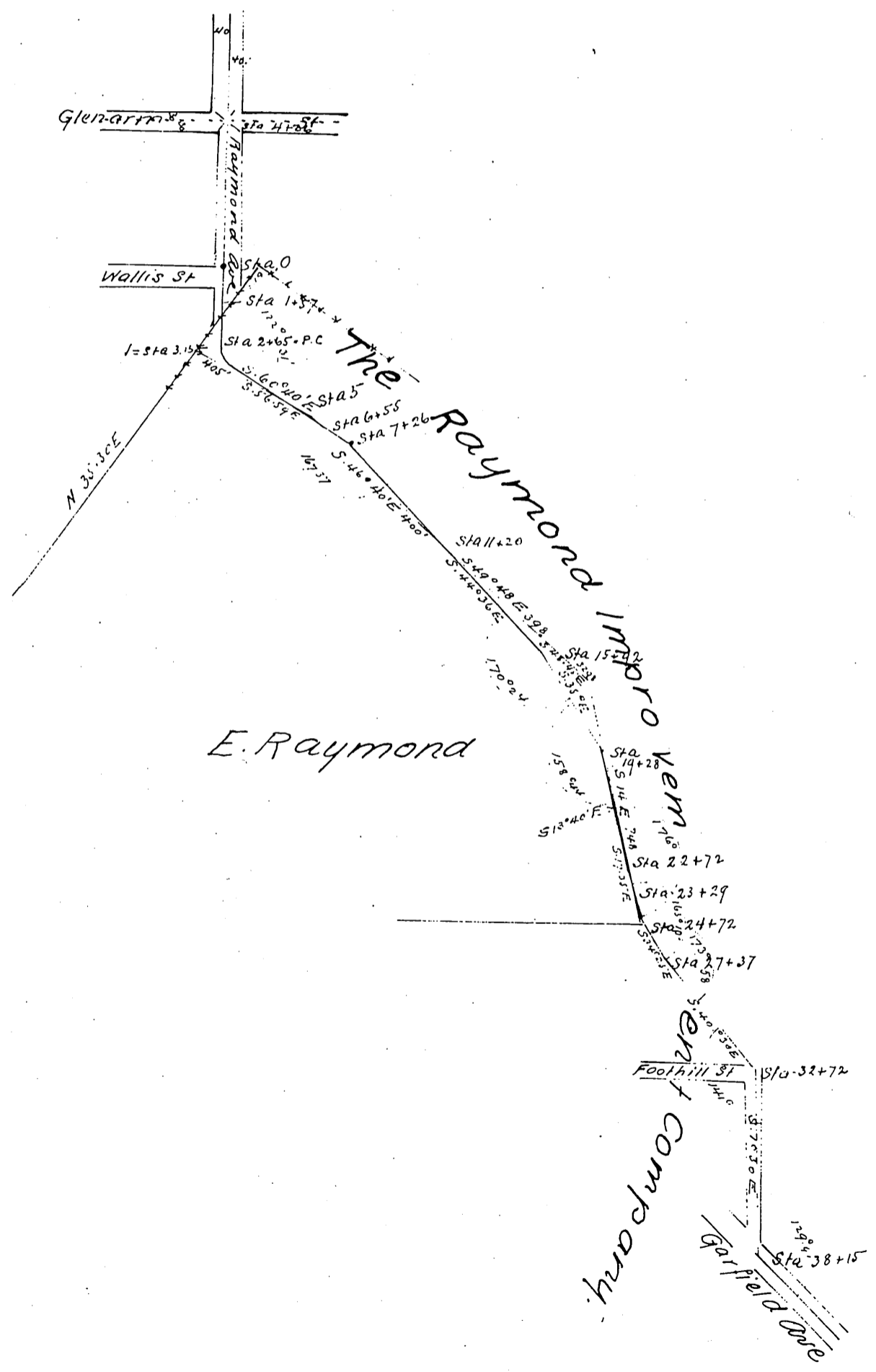


Map  
 Showing  
 Main Sewer Line  
 of  
 City of Pasadena  
 as located on lands owned by E. Raymond and  
 The Raymond Improvement Company  
 Aug. 1887  
 Eng. No. 1887



A full true and correct copy of the original recorded Nov. 16 1887  
 at 3 min past 10 a m at request of Raymond Improvement Co  
 Frank A Gibson County Recorder  
 by Geo. B. Quinn Deputy