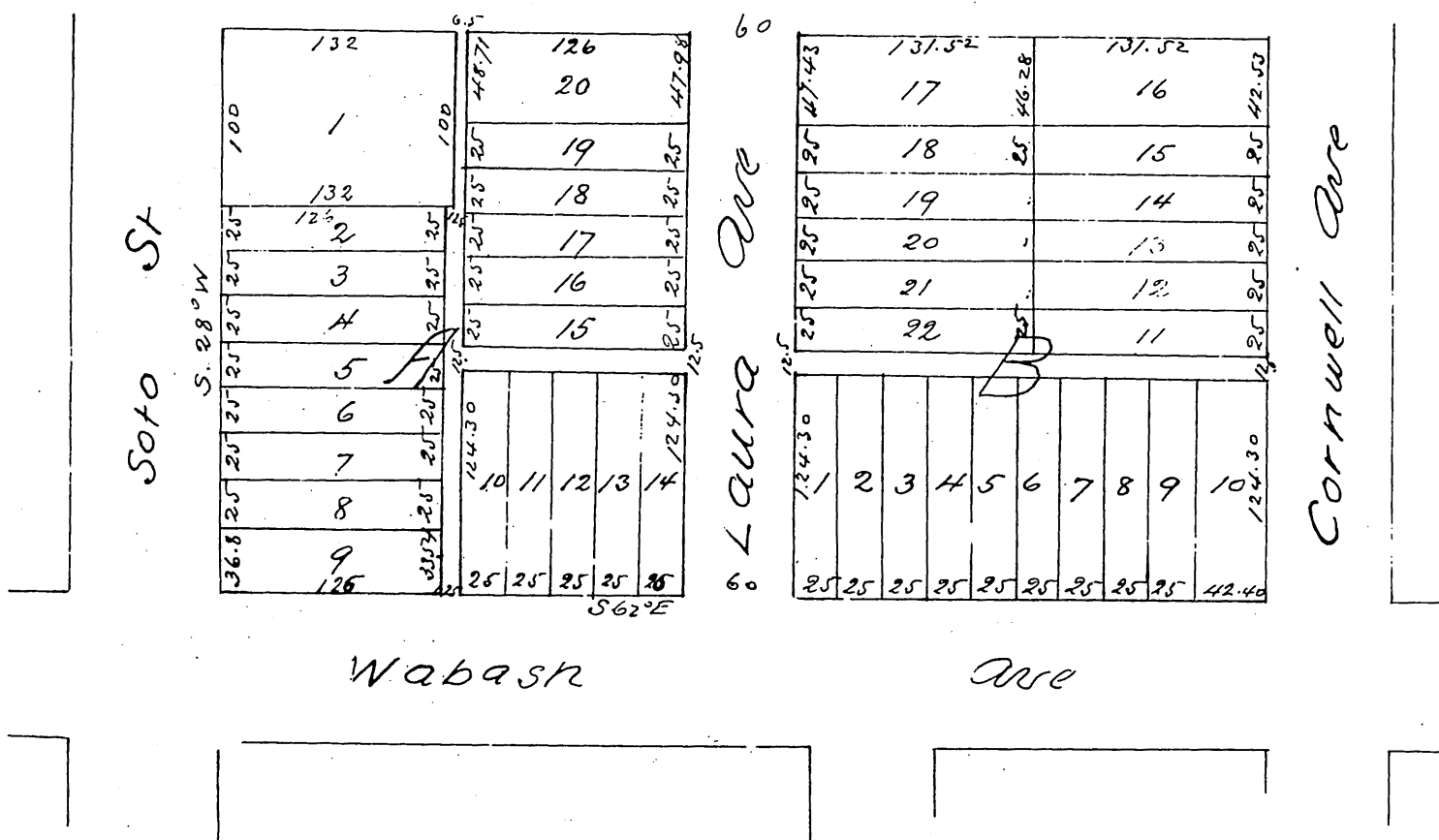


Map of  
 A. Barlow's Sub'd  
 of Lot 8 of Wilkinson's Sub'd of Lot L B 1/4 61 H.S.  
 Recorded B5 pp 513 mis.  
 Los Angeles Cal.

Nov 11 1887

I. H. Carver C.E.

Scale 50 ft = 1 in



A full true and correct copy of the original produced to  
 the scale of 100 feet to one inch recorded Nov. 16<sup>th</sup>  
 1887 at 124 p.m. at request of A. Barlow

Frank A. Gibson Co. Recorder  
 by Geo. Bugbee Deputy