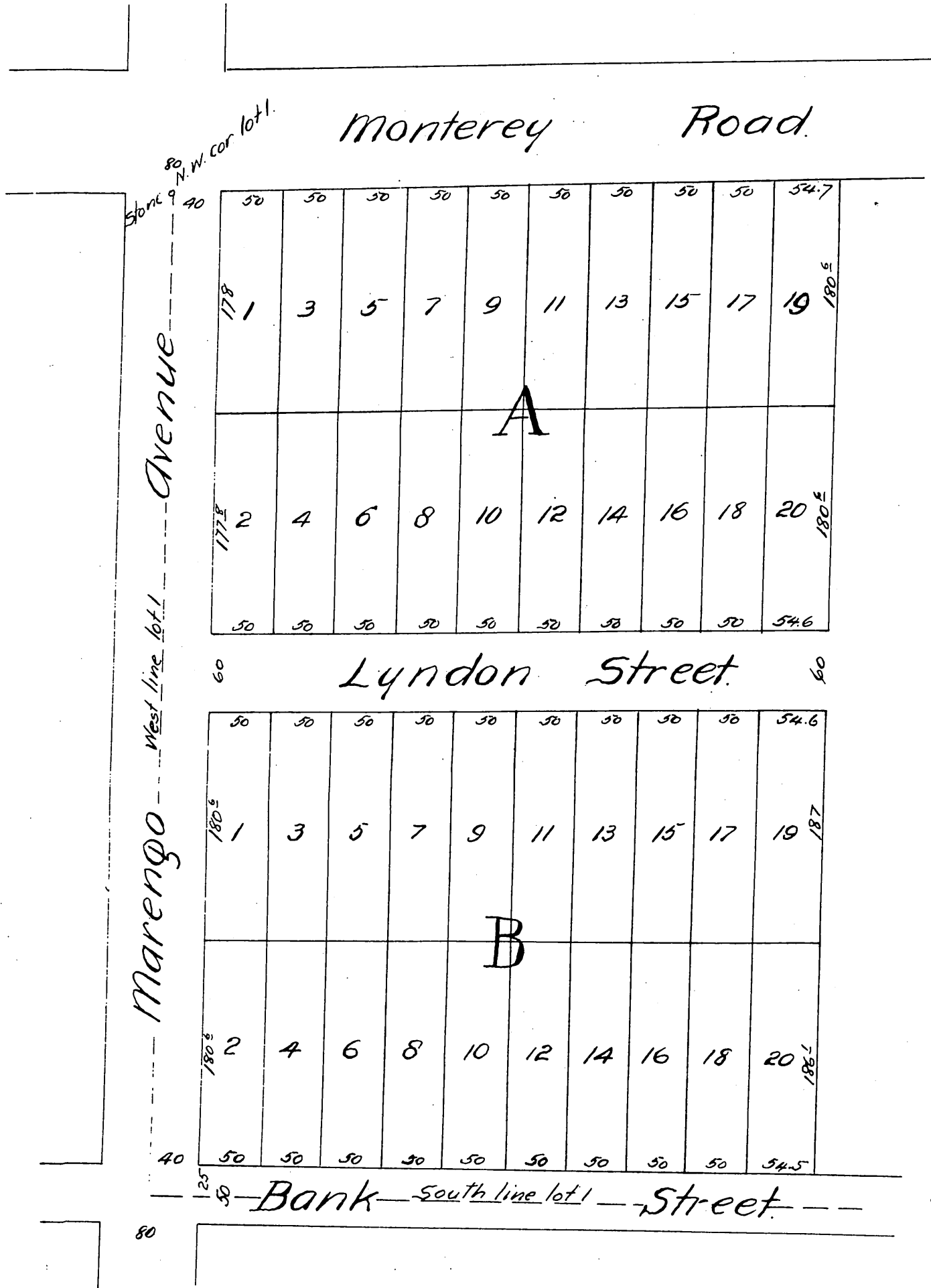


Amended PLAT

Garnsey ^{AND} McFarland's Subdivision of W¹/₂ lot 1 Block B Marengo Tract Los Angeles County, California.

Scale 100 ft. to inch.



A full, true and correct copy of the original
recorded Nov. 17, 1887 at 51 min. past 1 P.M.
at request of C. McFarland.

Frank G. Gibson County Recorder.
By George Kuyper. Deputy.