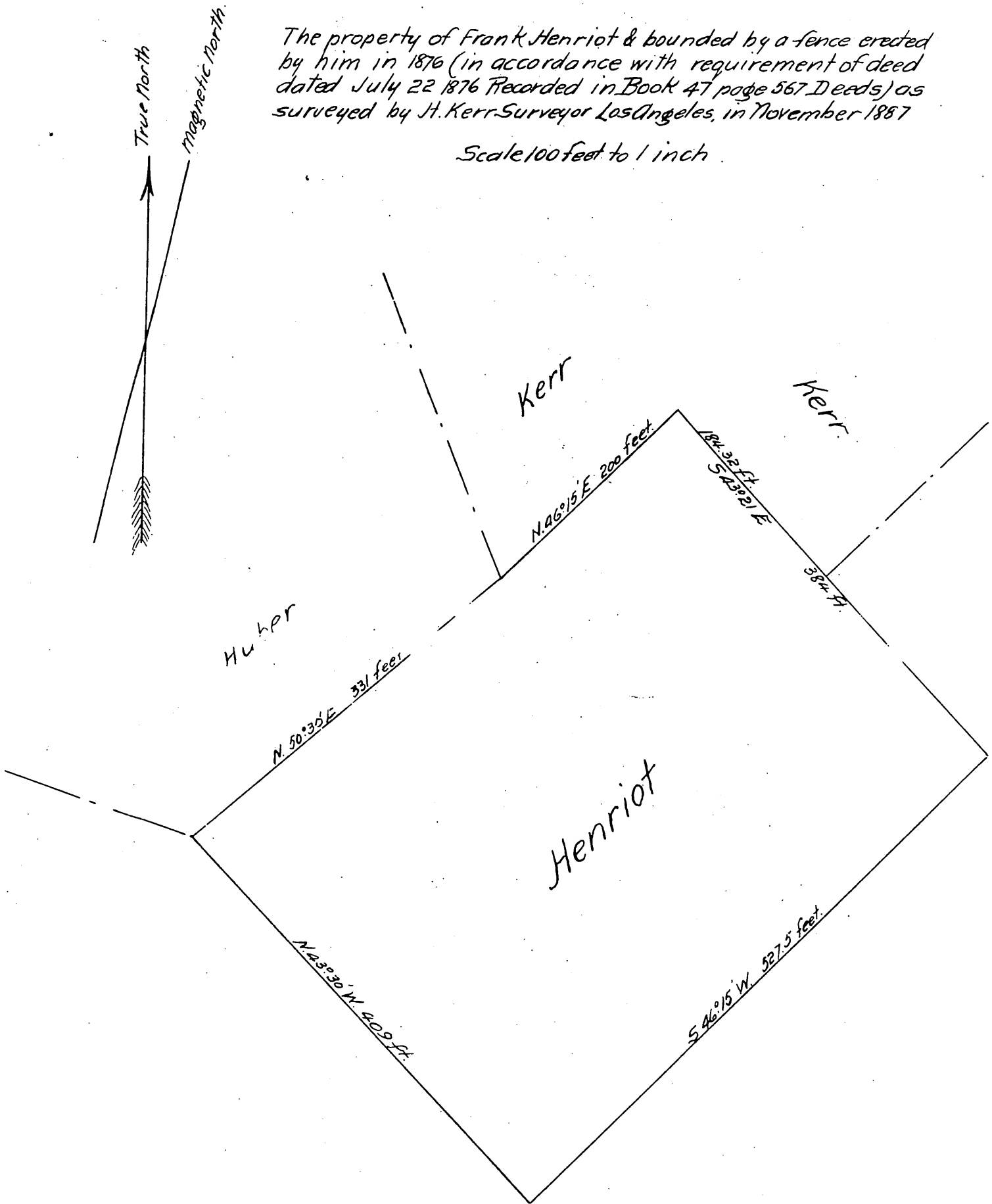


Map
 of a tract commonly called
The French School Lot
 in the
 City & County of Los Angeles California

The property of Frank Henriot & bounded by a fence erected by him in 1876 (in accordance with requirement of deed dated July 22 1876 Recorded in Book 47 page 567 Deeds) as surveyed by H. Kerr Surveyor Los Angeles, in November 1887

Scale 100 feet to 1 inch



A full, true and correct copy of the original recorded Nov 18, 1887 at 41 min. past 11 A.M. at request of F. Henriot

Frank A. Gibson County Recorder.
 By George Bugbee, Deputy.