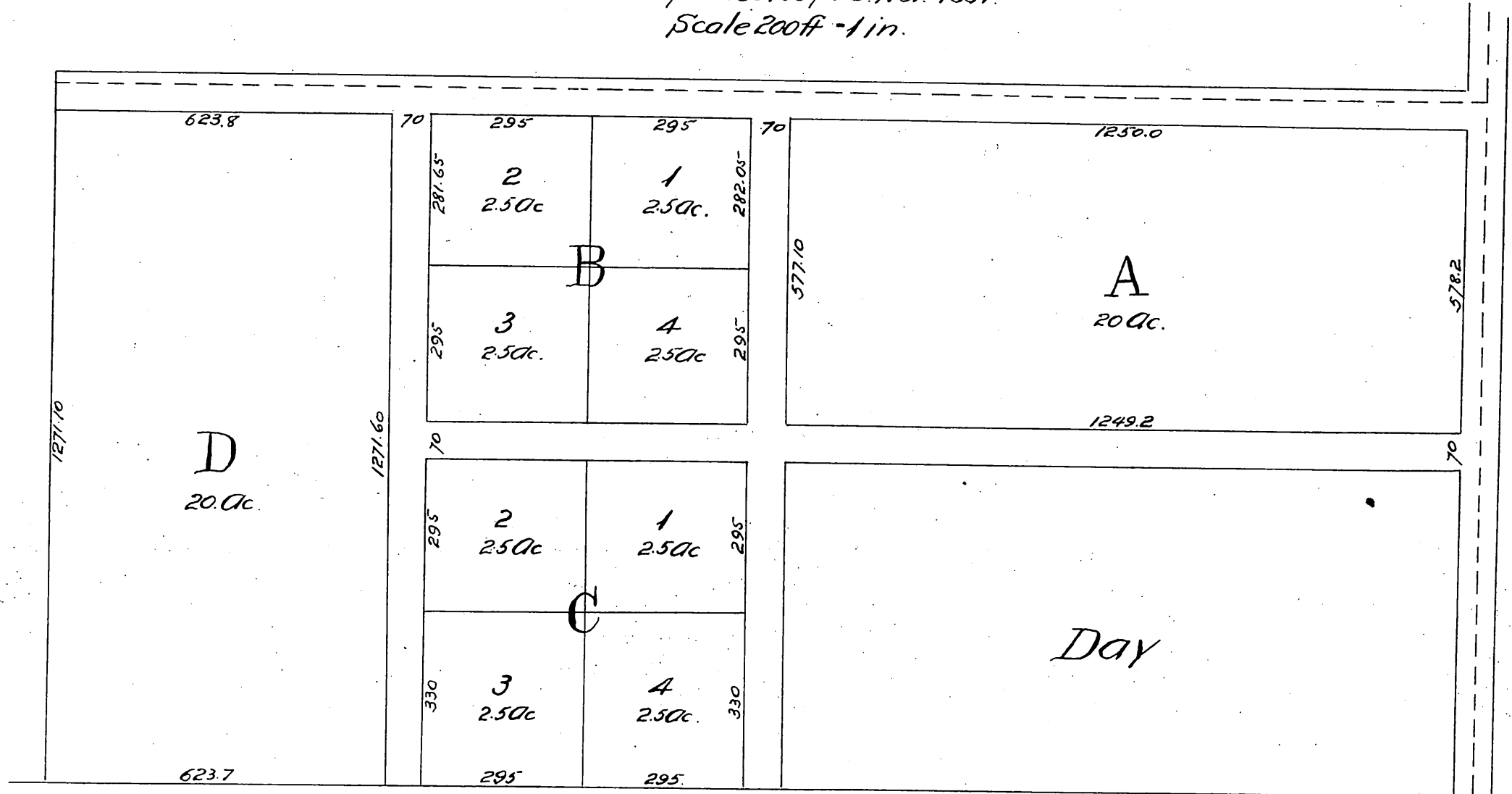


Map
OF
E. T. Palmer's Subdivision
of the S $\frac{1}{2}$ of N. E $\frac{1}{4}$, Sec. 6 T. 1 S., R. 8 W. S. B. M.
Los Angeles Co. Cal.

Jas. T. Taylor Surveyors. Nov. 1887.
Scale 200ft = 1 in.



A full, true and correct copy of the original
(reduced to the scale of 250 feet to one inch)
recorded Nov. 18, 1887 at 12 min. past 2 P.M.
at request of E. T. Palmer.

Frank A. Gibson County Recorder
By George Hughes Deputy.