

Edna Park

Being a subdivision of the S.W. quarter of the
N.W. quarter of Section 19 T2S. R. 13W. S.B.M.

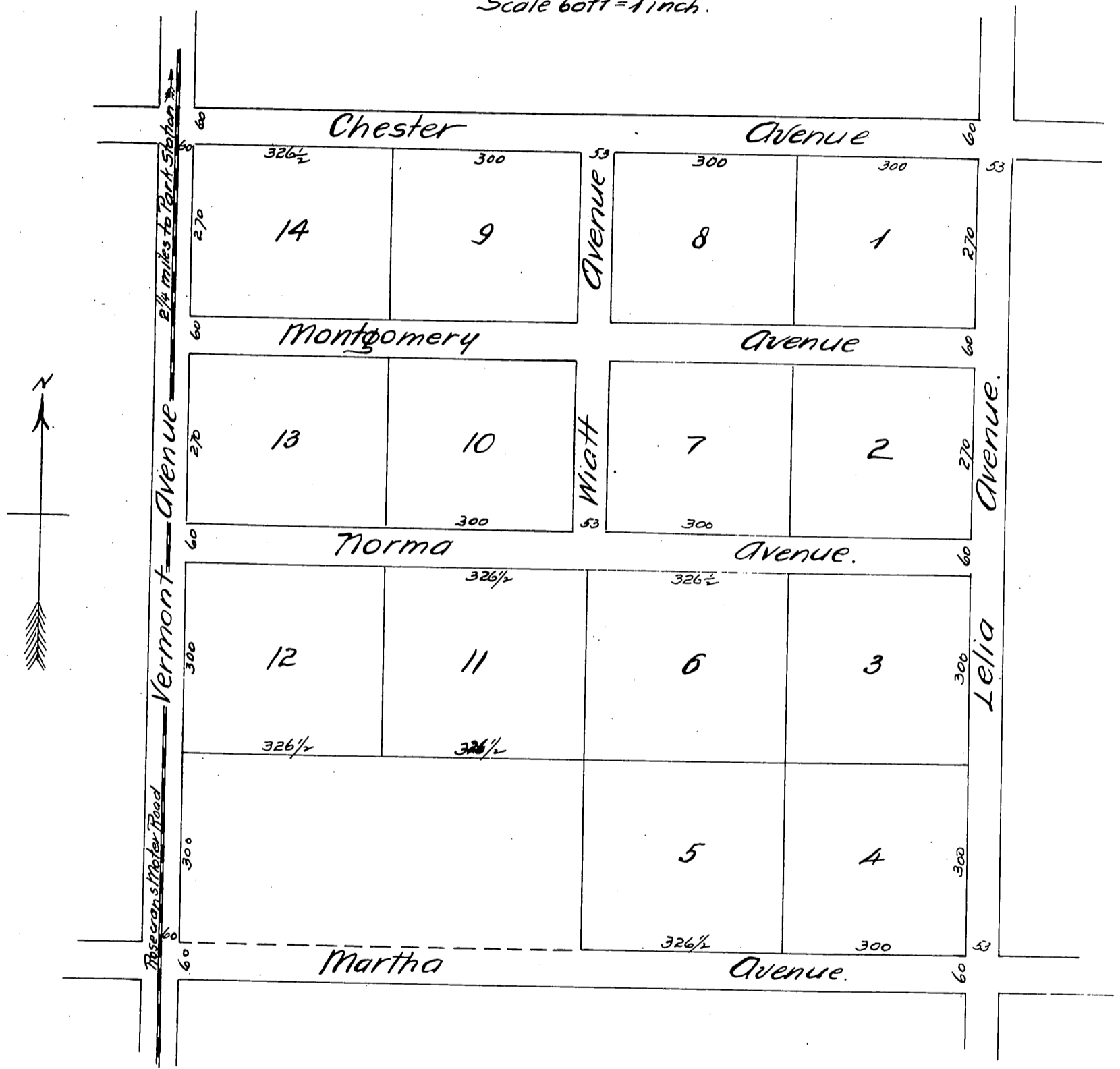
Owned by L. F. Quinby and Ch. Bauer.

Los Angeles. Co. Cal.

S. R. Langworthy Civil Engineer

Surveyed Oct. 1887

Scale 60ft = 1 inch.



A full, true and correct copy of the original
(reduced to the scale of 200 feet to one inch)
recorded Nov 19, 1887 at 30 min. past 1 P.M.
at request of L. F. Quinby

Frank A. Gibson County Recorder.
By George Bugbee Deputy.