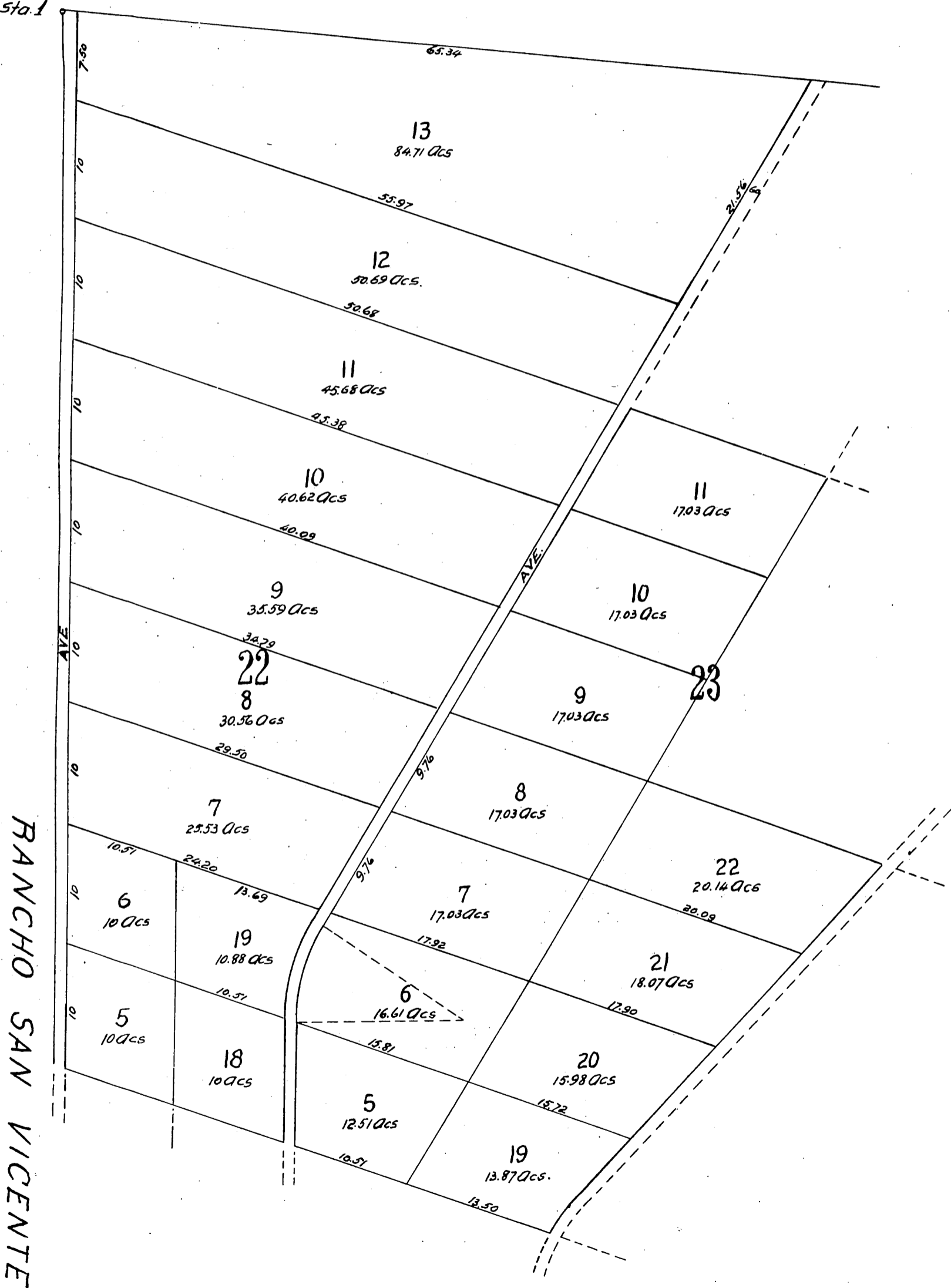


Map of the subdivision of Rancho San Jose de Buenos Ayres

owned by
Los Angeles & Santa Monica Land & Water Co.
situated in Los Angeles Co. California.

Surveyed by Theo. G. Koeberle 1887.
Scale 400 feet to one inch.

Sta. 1



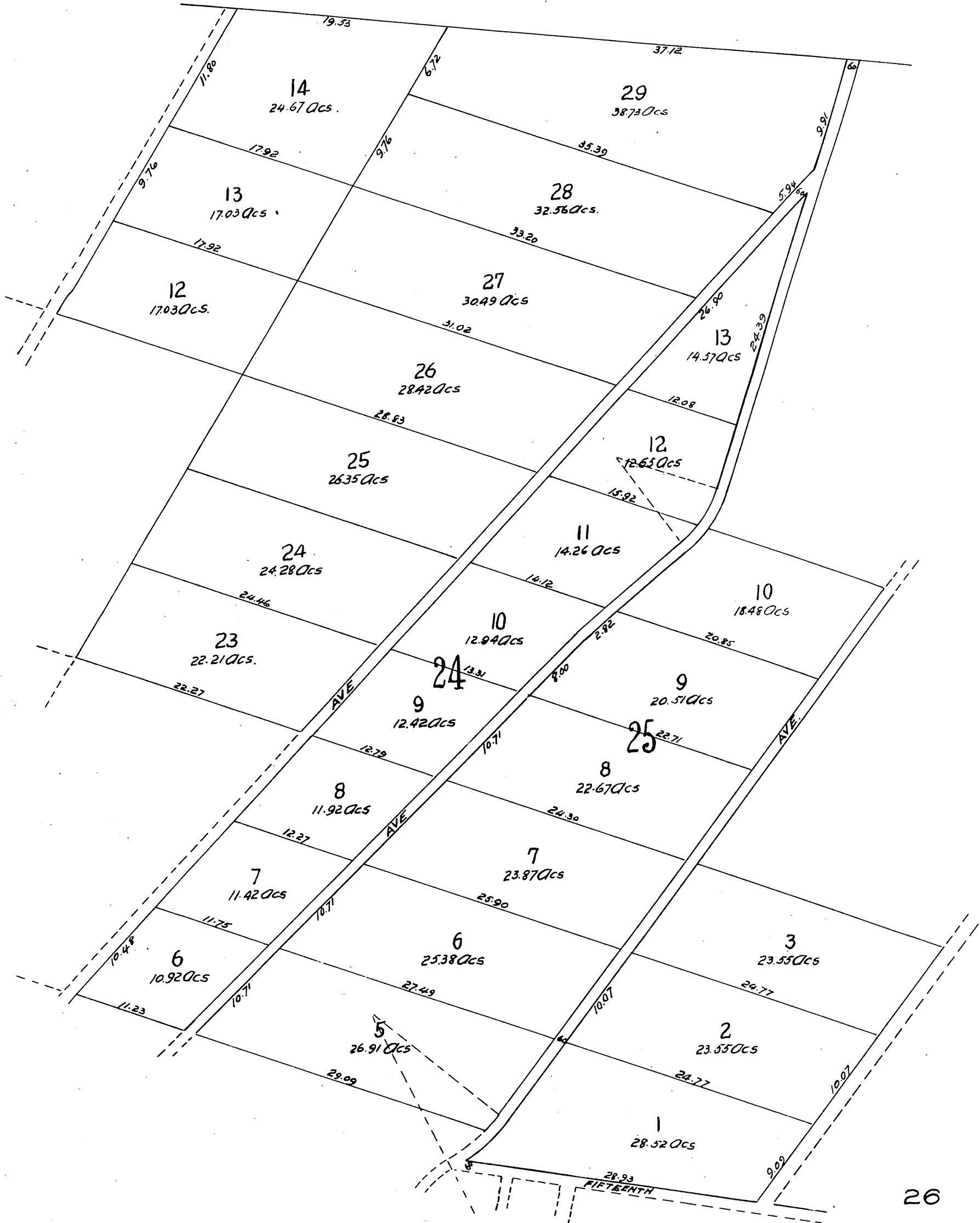
RANCHO SAN VICENTE

EXPLANATIONS.

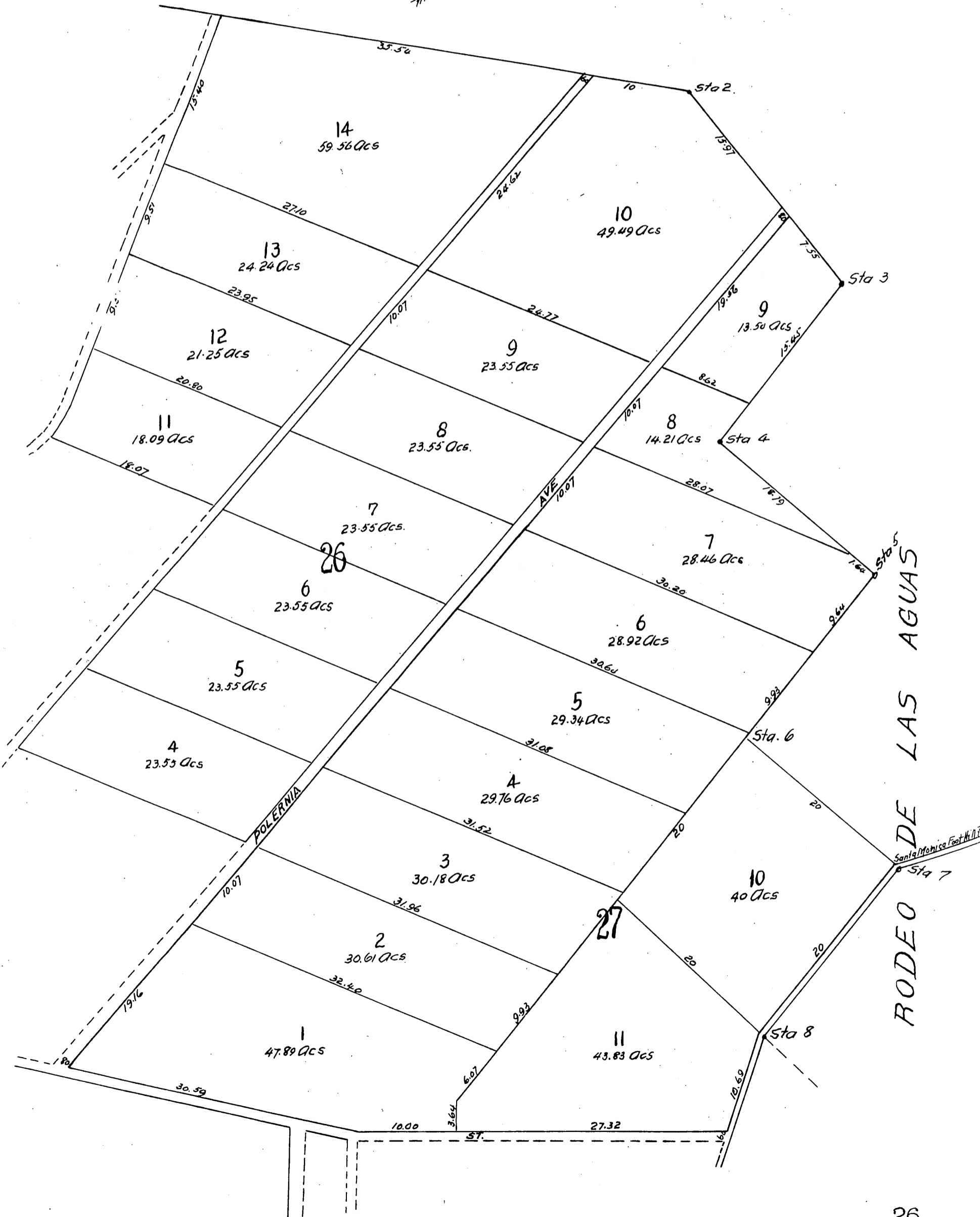
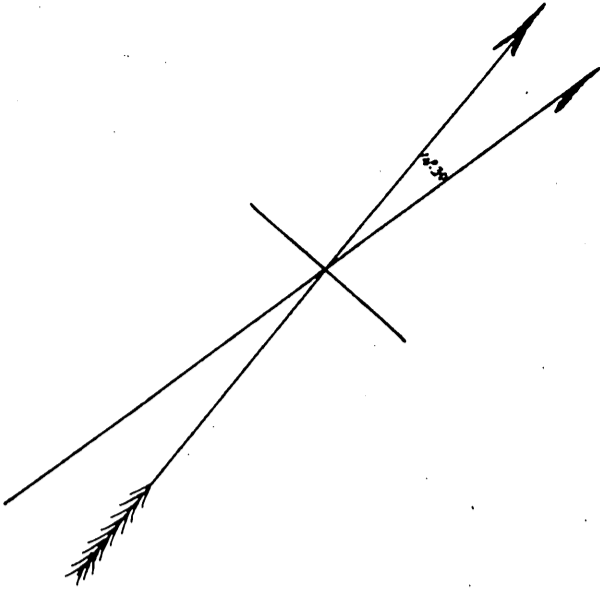
No	True Course	Dist in Chns.	Remarks
1	N. 58 3/4° E	168	Oak tree marked and blazed
2	S 81 1/2° E	23	Stone with pits
3	South	20	Stake in mound of rocks
4	East	20	corner - fence
5	South	20	
6	East	20	
7	South	20	
8	S 21° 20' E	55.77	mound - rocks with pits
9	S. 31° E	110	corner - fence
10	S. 53° W	104	Small stake supposed to have been set by Wright.
11	S 63° 3' W	2.41	Stake in mound of rocks
12	S. 59 1/2° W	52	
13	N 35 1/2° W	258	on South side of a road

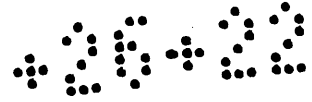
NOTE

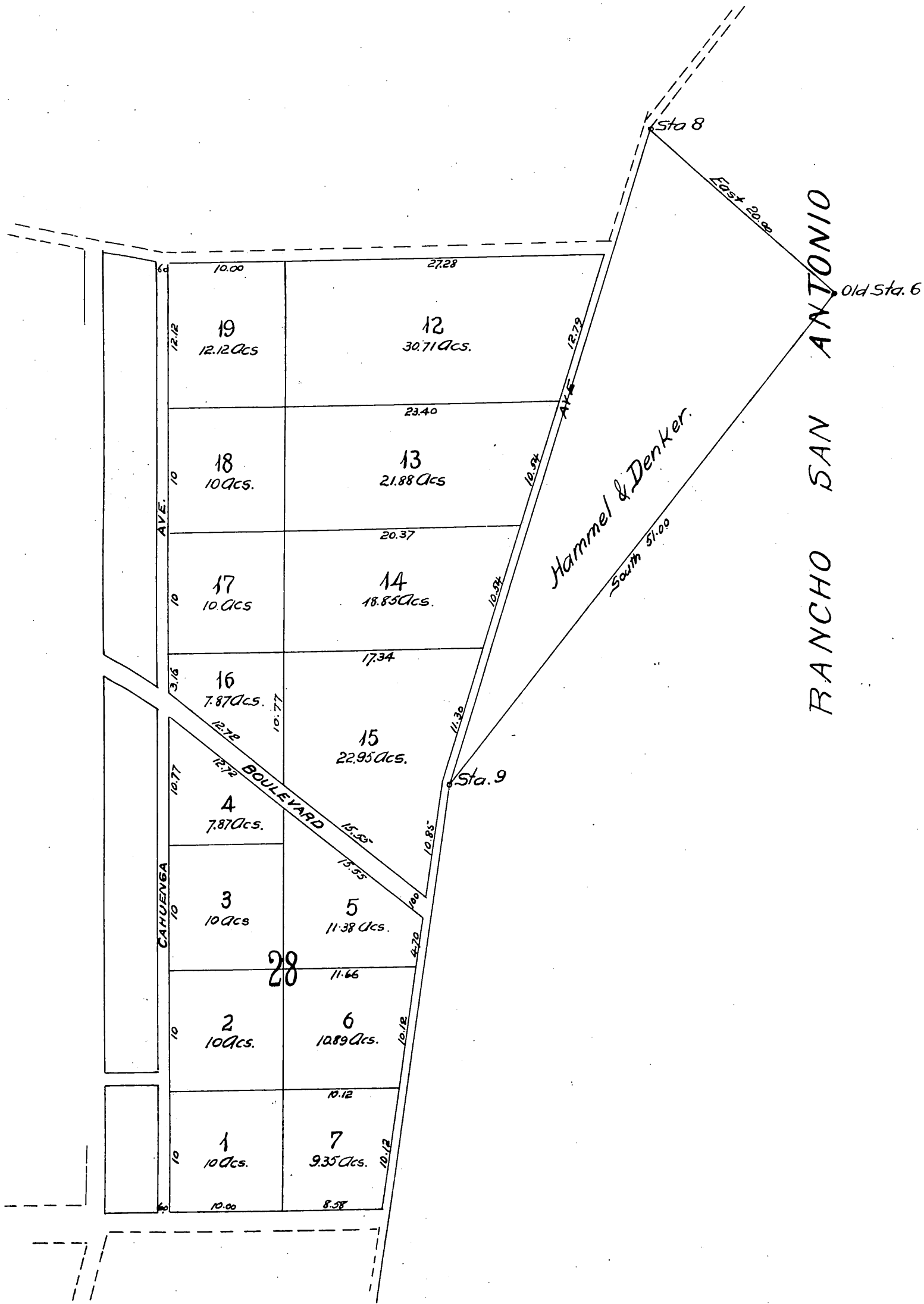
All measurements have been taken with a Gunter's chain 0.15 too long
 Courses and distances in table are according to old survey

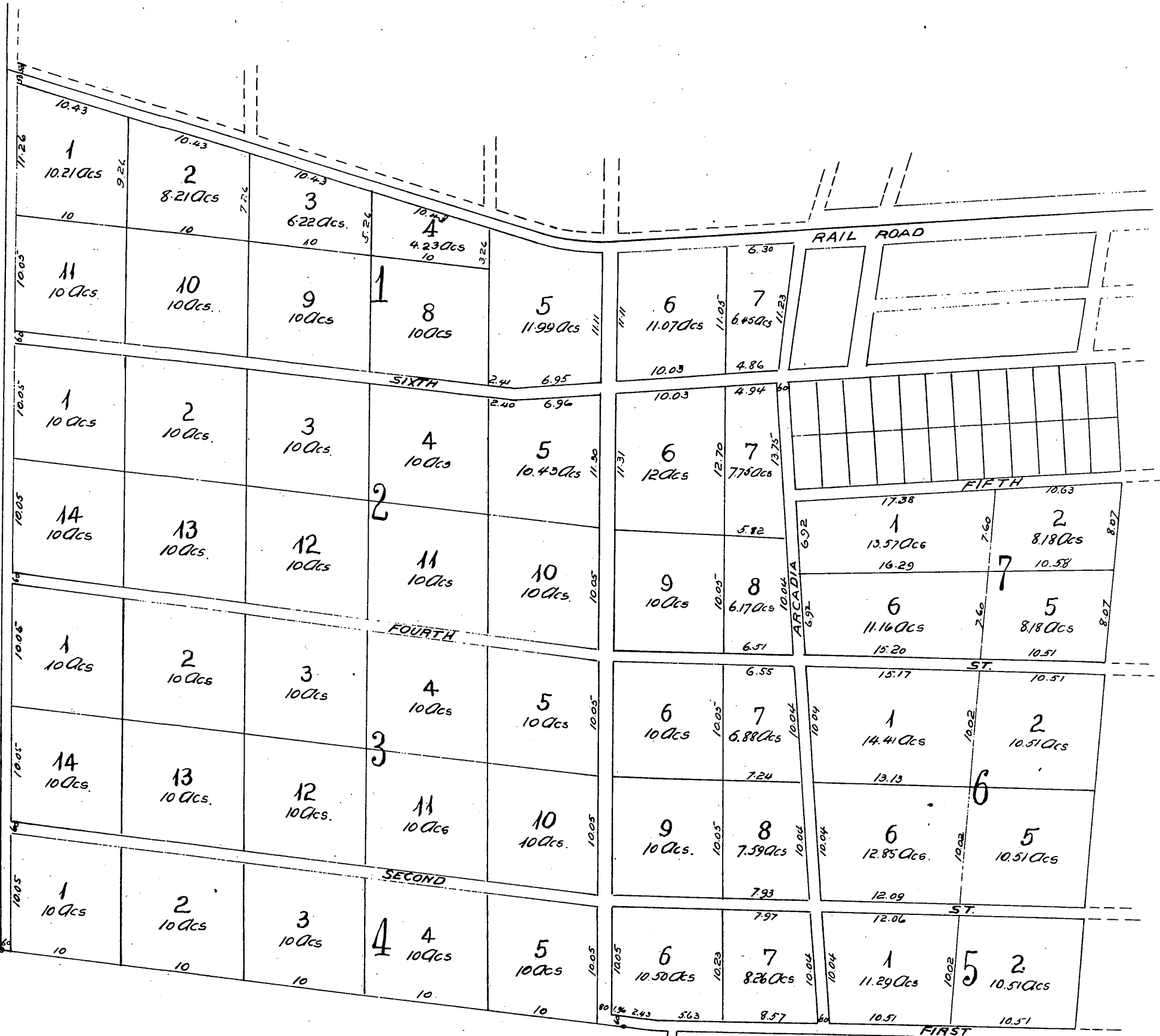
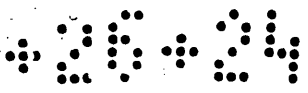


28-21



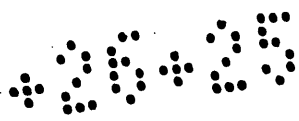




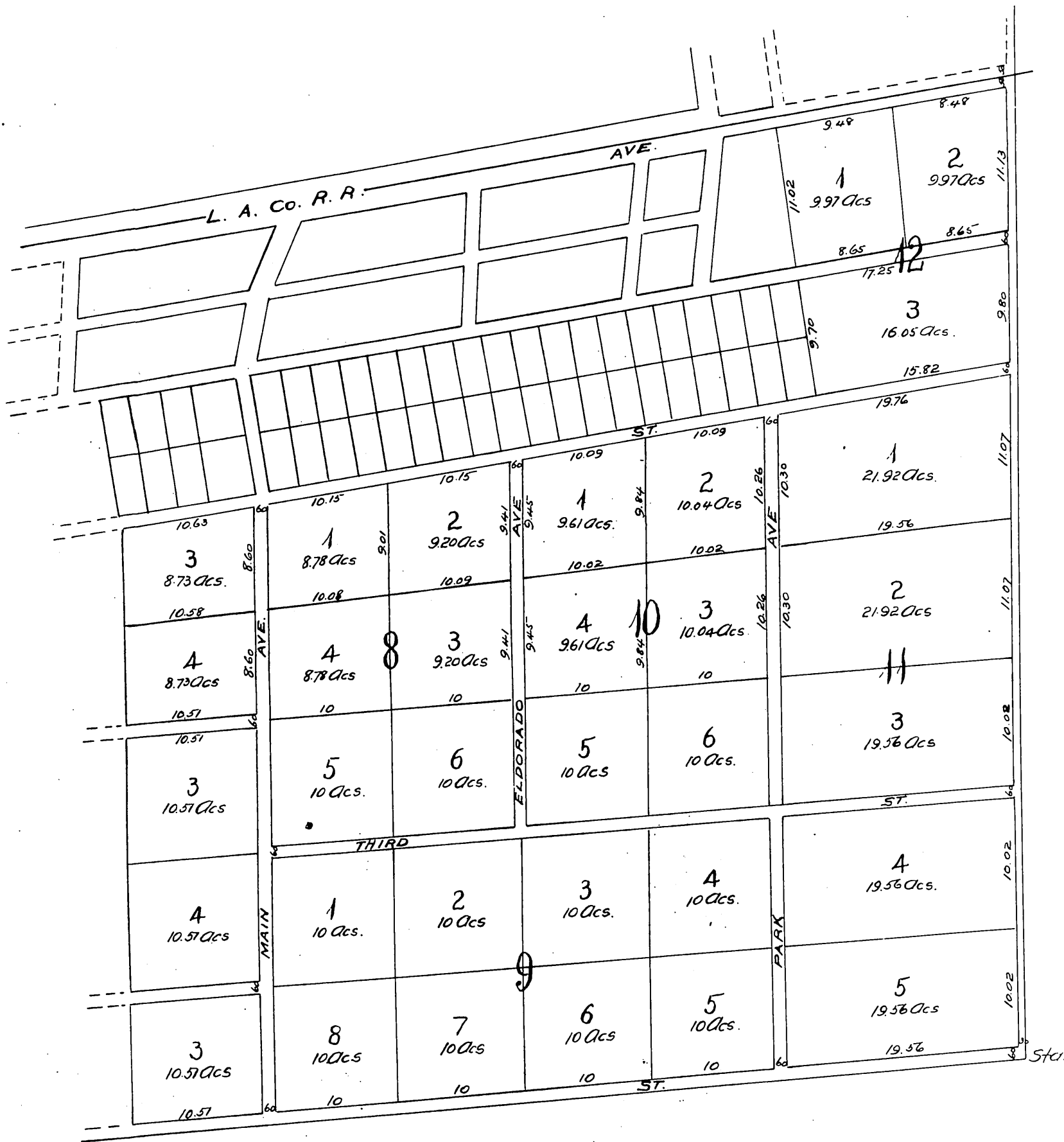


RANCHO LA BALLONA

RANCHO



TOWN OF SUNSET



RINCON DE LOS BUEYES

A full, true and correct copy of the original
 (reduced to the scale of 600 feet to one inch)
 recorded November 26, 1887 at 42 min. past
 11 A.M. at request of E.E. Hall.

Frank A. Gibson County Recorder
 By George Bugbee Deputy.