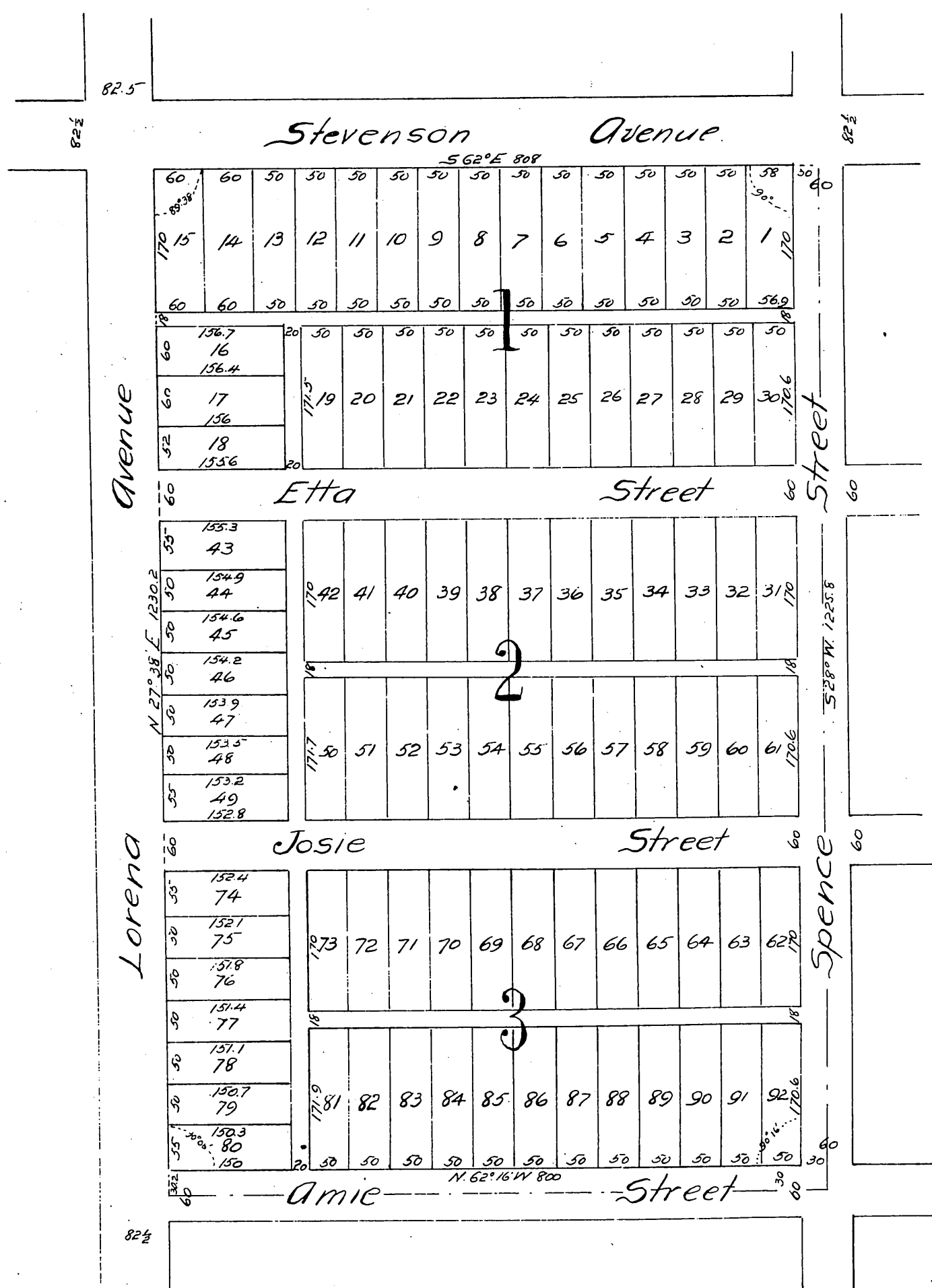


Map OF M. L. Wicks Subdivision

of Blocks 1, 2 and 3 of the Spence Tract.
Being a portion of Lot 4, Block 77 Hancock Survey
Los Angeles City Cal.

Surveyed Oct. 1887 by W. H. Tinker C. E.
Scale 100 feet = 1 inch.



A full, true and correct copy of the original
(reduced to the scale of 150 feet to one inch)
recorded Jan. 6, 1888 at 50 min. past 10 A. M.
at request of J. W. Anderson.
Frank A. Gibson County Recorder.
By George Bugbee Deputy.