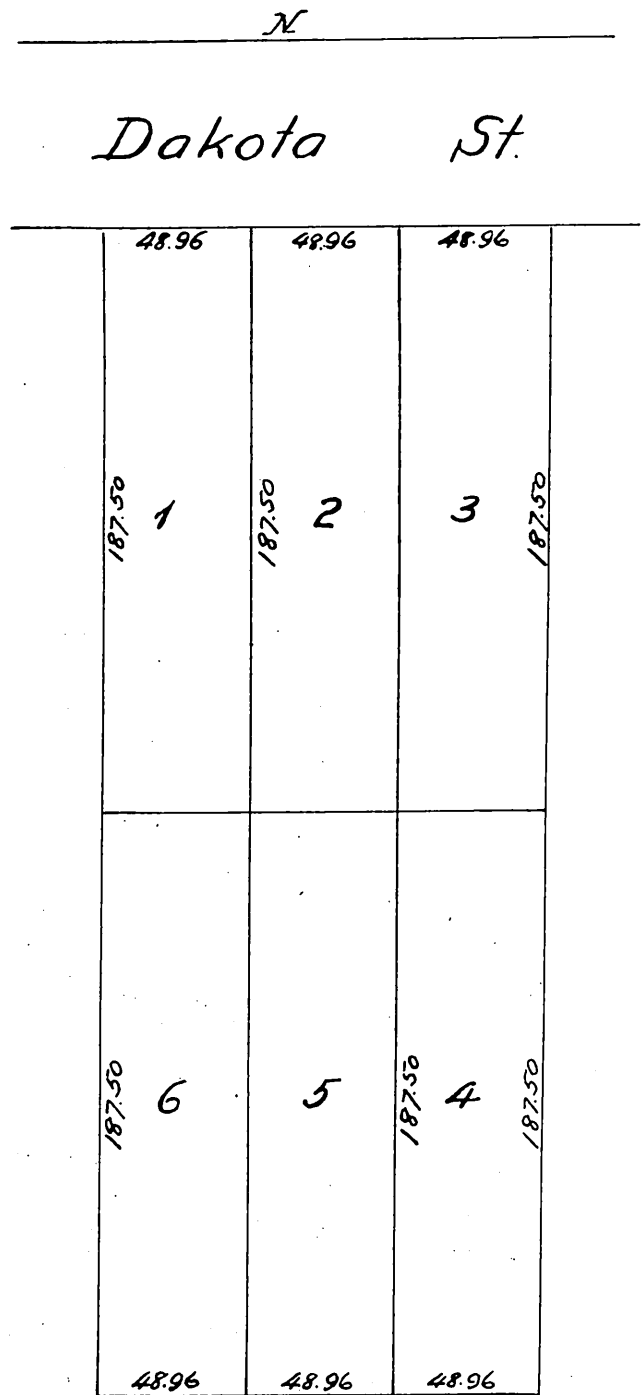


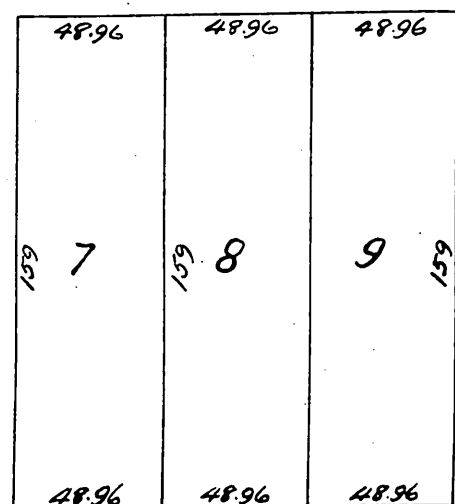
Map
OF
Helen & Craig's
Subdivision.

Being the East 2 acres of the East 4 acres of
the West 9.98 acres of Lot 23 Blk A San
Pasqual Tract Pasadena. Cal.

Surveyed Oct¹⁵ 1887 by Geo. Helen Sur.
Scale 60 feet to the inch.



60 Dennison St.



5

A full, true and correct copy of the original
recorded Nov. 22, 1887 at 41 min. past 10 A.M.
at request of Helen & Craig.

Frank A. Gibson, County Recorder.
By George Bugbee, Deputy.