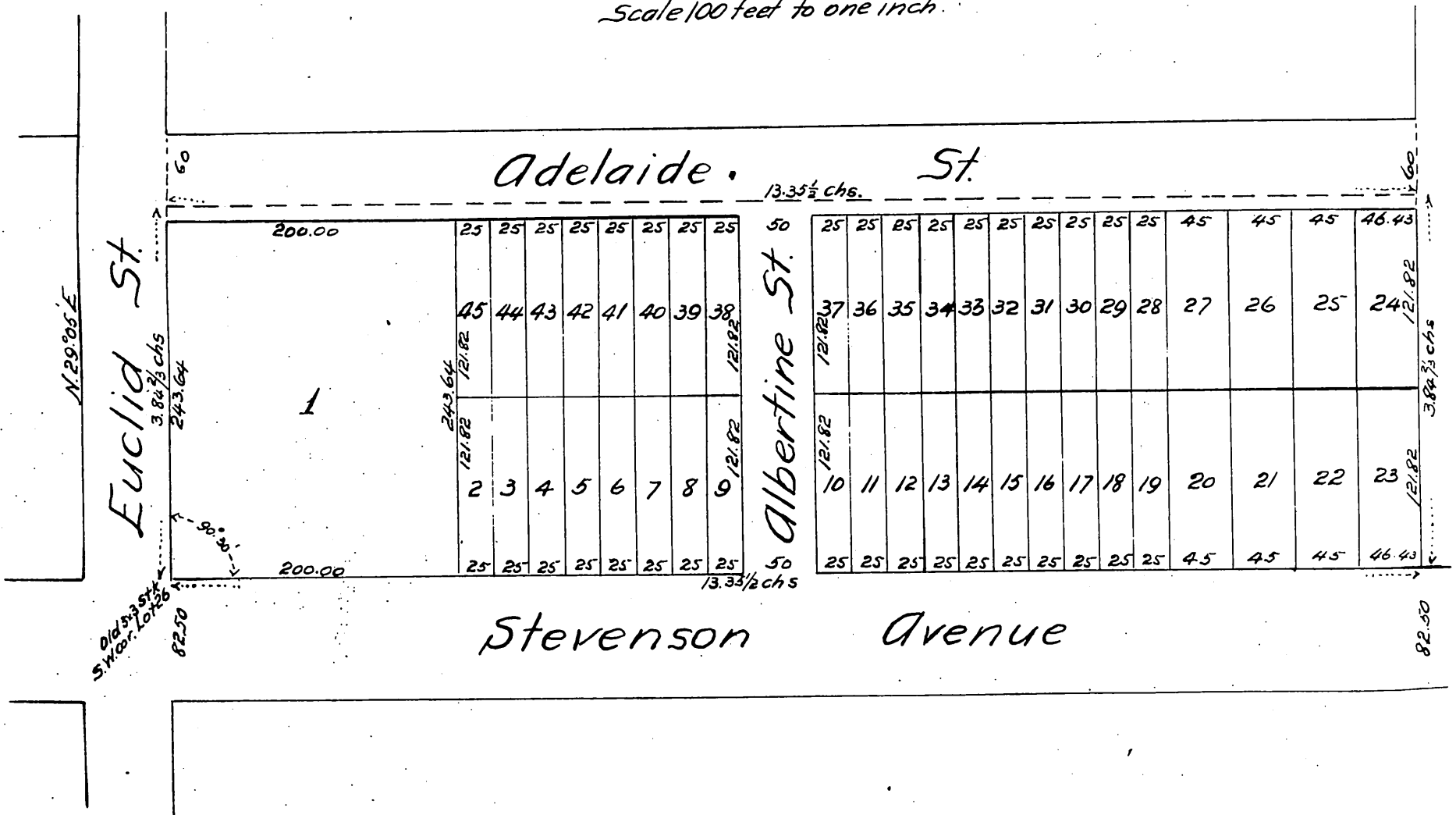


Map
OF THE
Alta Vista Tract
situated in
Los Angeles City, Cal.

being a subdivision of Lot 26, Workman & Hellman
Tract. Recorded in Book 5 Page 175 Misc. Rec.
Surveyed in Oct. 1887 by J.H. Dockweiler.

Scale 100 feet to one inch.



A full, true and correct copy of the original
recorded Nov. 22, 1887 at 12 min. past 11 A.M.
at request of J.E. Schreck.

Frank A. Gibson. County Recorder.
By George Bugbee. Deputy.