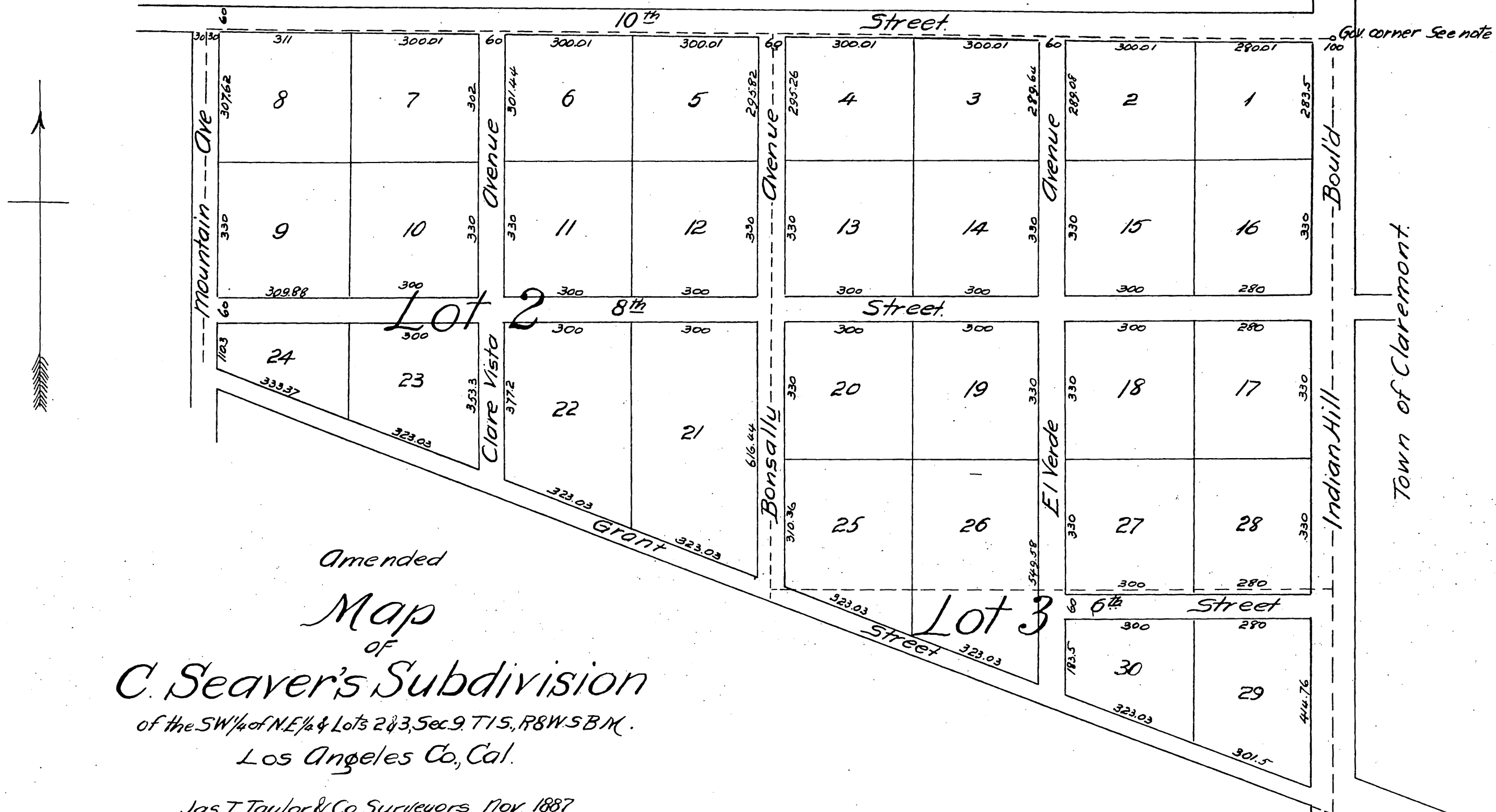


Note Gov. corner being N.E. corner of the SW 1/4 of N.E. 1/4 Sec. 9
T. 1 S. R. 8 W. S. B. M.



Amended
Map
of
C. Seaver's Subdivision
of the SW 1/4 of N.E. 1/4 & Lots 2 & 3, Sec. 9, T. 1 S., R. 8 W. S. B. M.
Los Angeles Co., Cal.

Jas. T. Taylor & Co Surveyors Nov. 1887
Scale 200 ft = 1 in.

A full, true and correct copy of the original
(reduced to the scale of 250 feet to one inch)
recorded Nov. 22, 1887 at 37 min. past 2 P. M.
at request of A. & T. I. Co.
Frank A. Gibson County Recorder.
By George Bugbee, Deputy.