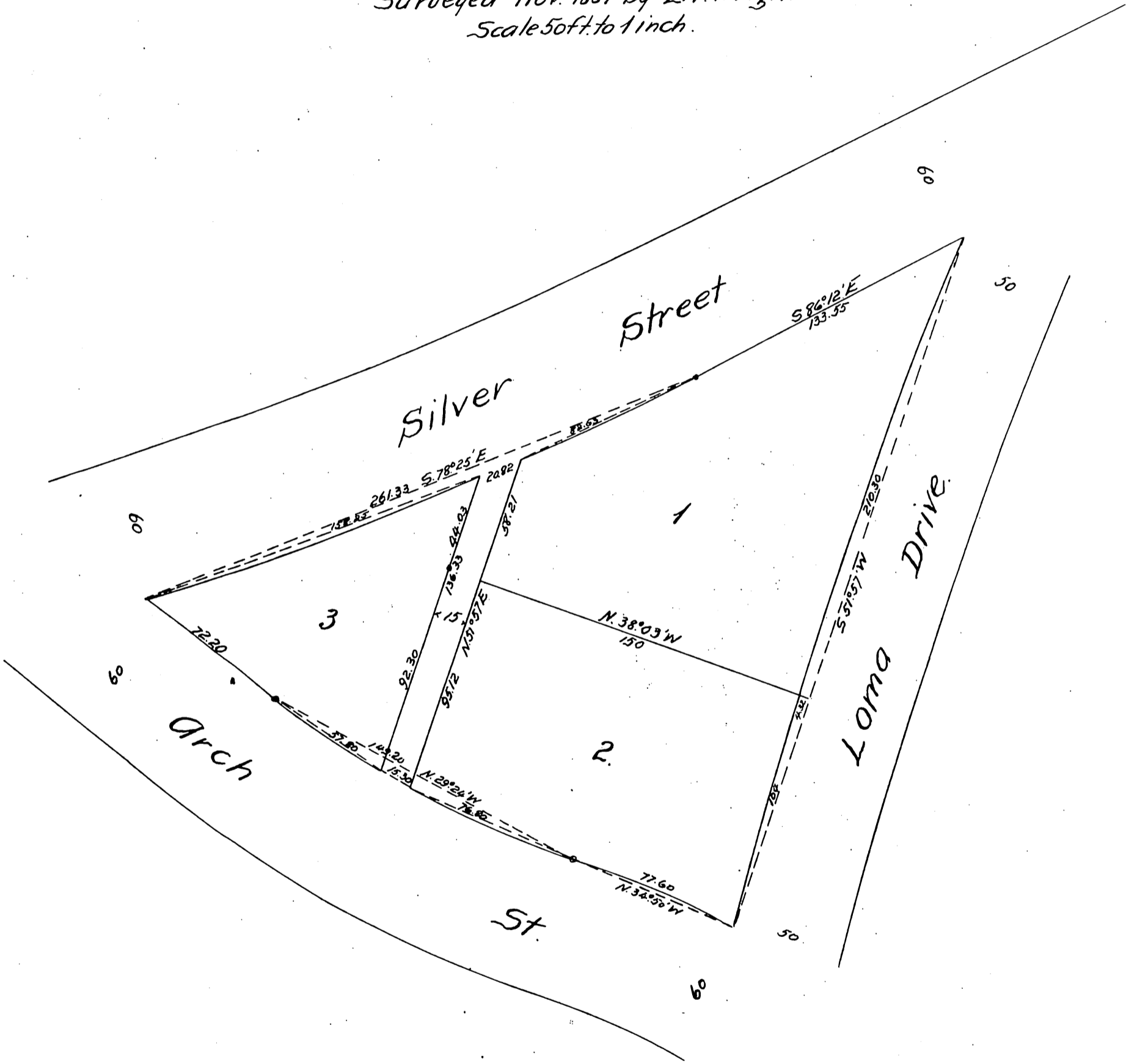


2844

Plat  
 OF  
 C.T. Parson's Subdivision  
 of Block K Colina Park  
 Los Angeles City, Cal.

Surveyed Nov. 1887 by E.T. Wright.  
 Scale 50ft. to 1 inch.



A full, true and correct copy of the original  
 recorded Nov. 25, 1887 at 52 min. past 2 P.M.  
 at request of C.T. Parsons.

Frank A. Gibson, County Recorder.  
 By George Taylor, Deputy.