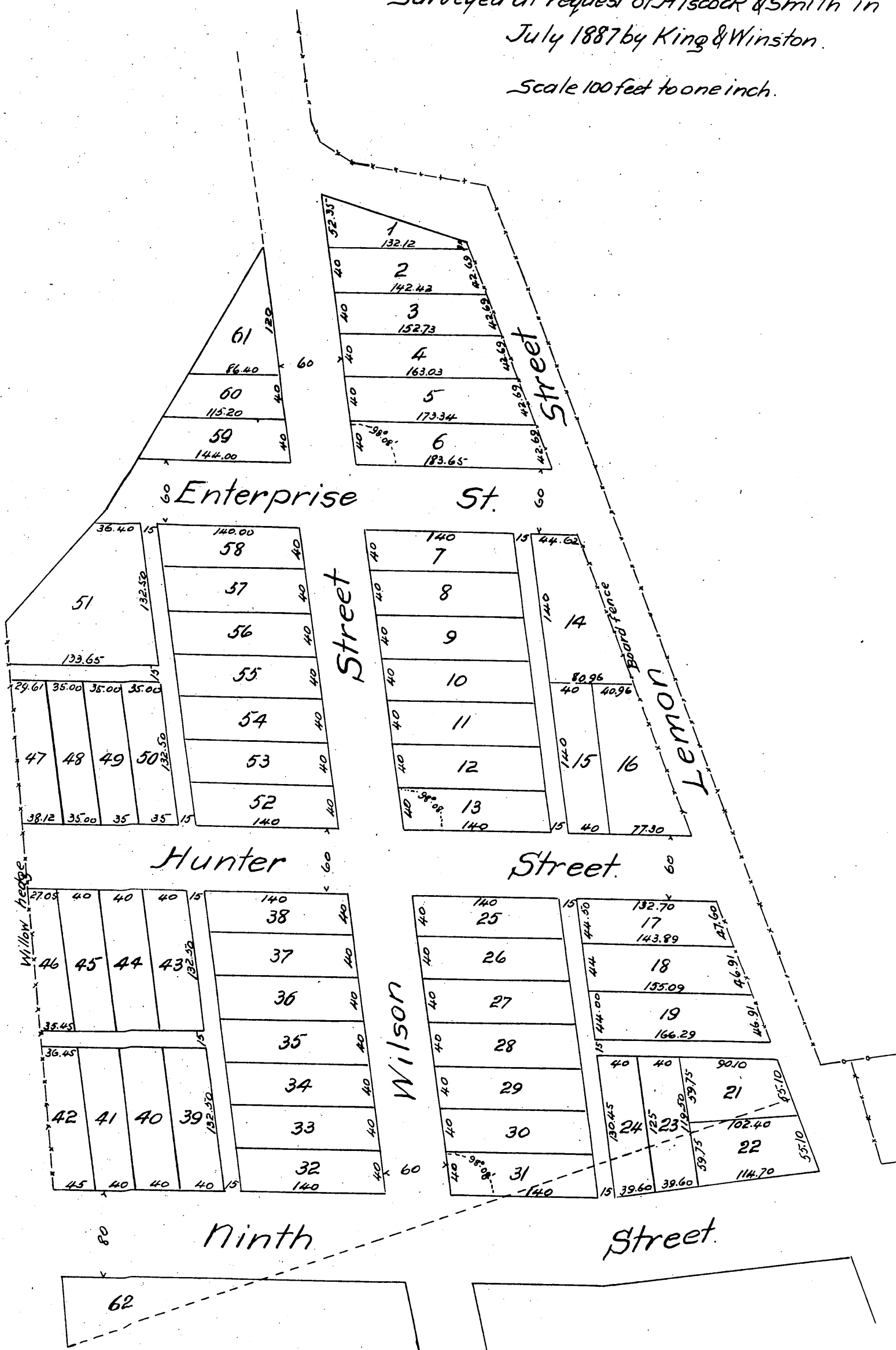




# Map OF Hiscock & Smith's Second Addition City of Los Angeles.

Surveyed at request of Hiscock & Smith in  
July 1887 by King & Winston.

Scale 100 feet to one inch.



A full, true and correct copy of the original  
recorded Nov. 26, 1887 at 11 min. past 11 A.M.  
at request of Chas. A. Smith.  
Frank A. Gibson County Recorder.  
By George Bugbee Deputy.