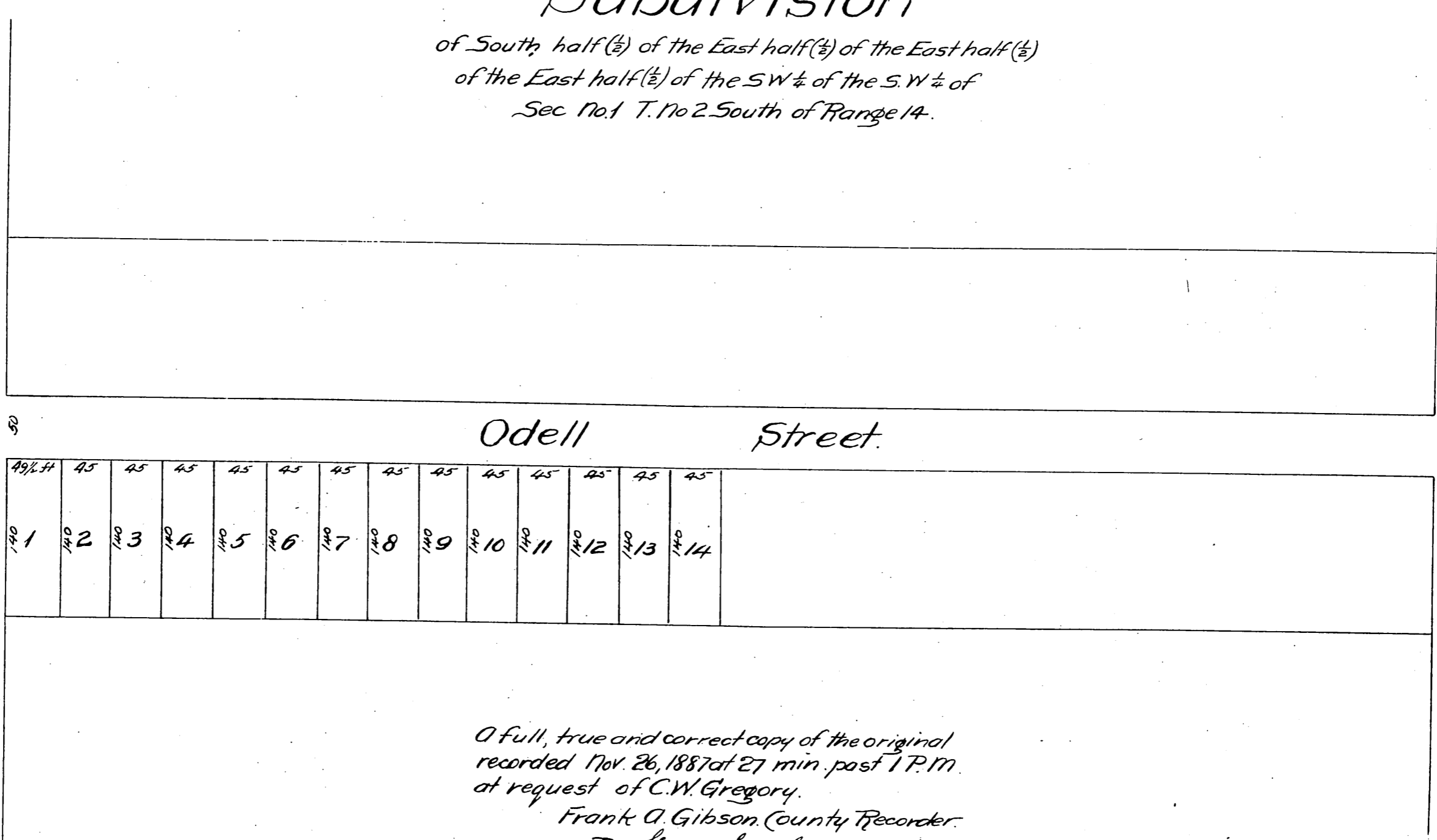


Santa Monica Avenue.

S. P. R. R. to Santa Monica



49 1/2 ft	45	45	45	45	45	45	45	45	45	45	45	45	45
140	140	140	140	140	140	140	140	140	140	140	140	140	140
1	2	3	4	5	6	7	8	9	10	11	12	13	14

# Subdivision

of South half (1/2) of the East half (1/2) of the East half (1/2)  
of the East half (1/2) of the SW 1/4 of the S.W 1/4 of  
Sec No. 1 T. No 2 South of Range 14.

Odell Street.

University Street  
50 ft.

A full, true and correct copy of the original  
recorded Nov. 26, 1887 at 27 min. past 1 P.M.  
at request of C.W. Gregory.  
Frank A. Gibson, County Recorder.  
By George Bugbee, Deputy.