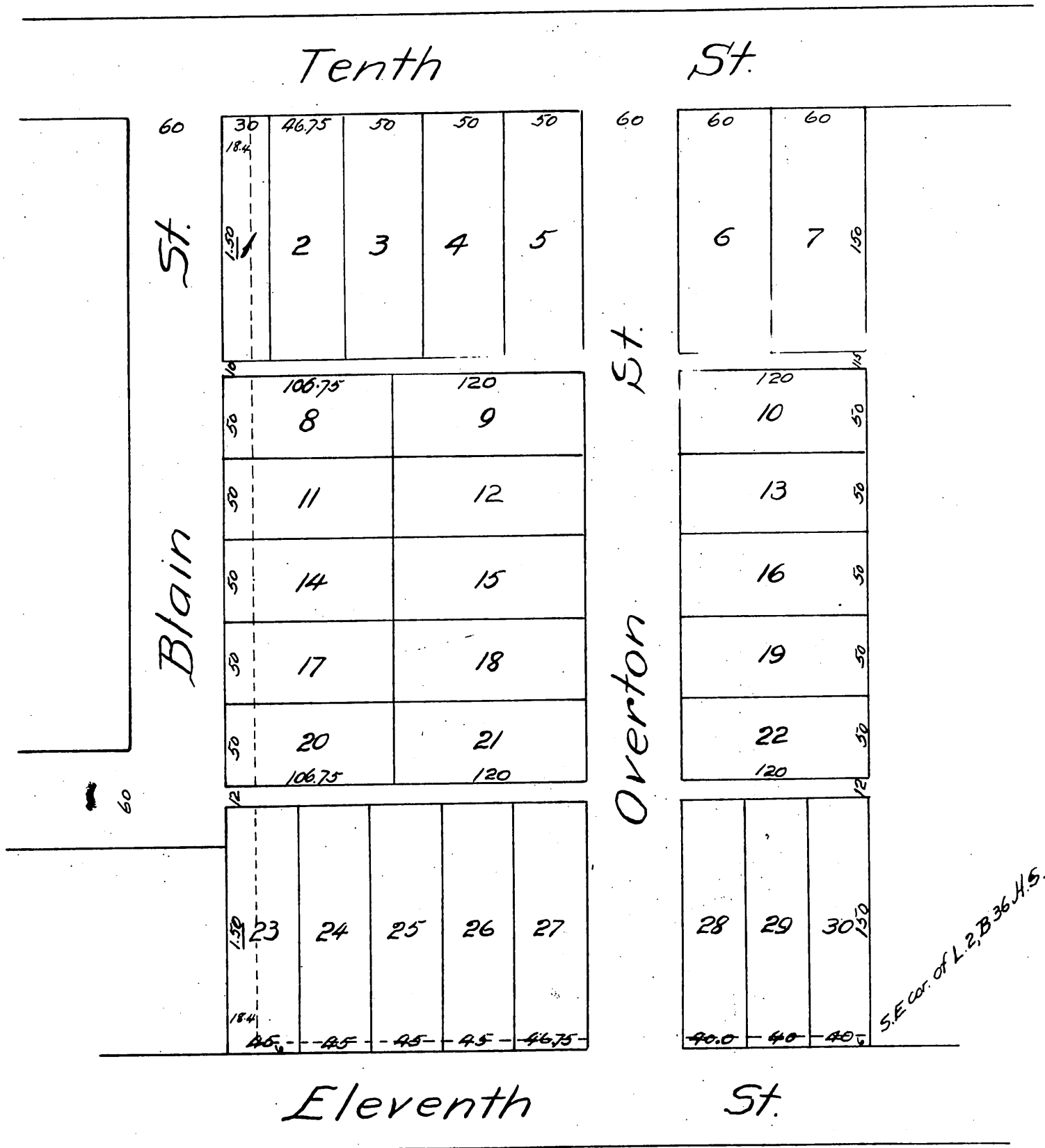




Map OF Overton Tract

Surveyed Nov. 1887 by E.G. Jones.

Scale 50' = 1"



A full, true and correct copy of the original (reduced to the scale of 80 feet to one inch) recorded Nov. 26, 1887 at 13 min. past 2 P.M. at request of C.A. Sumner.

Frank A. Gibson County Recorder.
By George Kugler. Deputy.