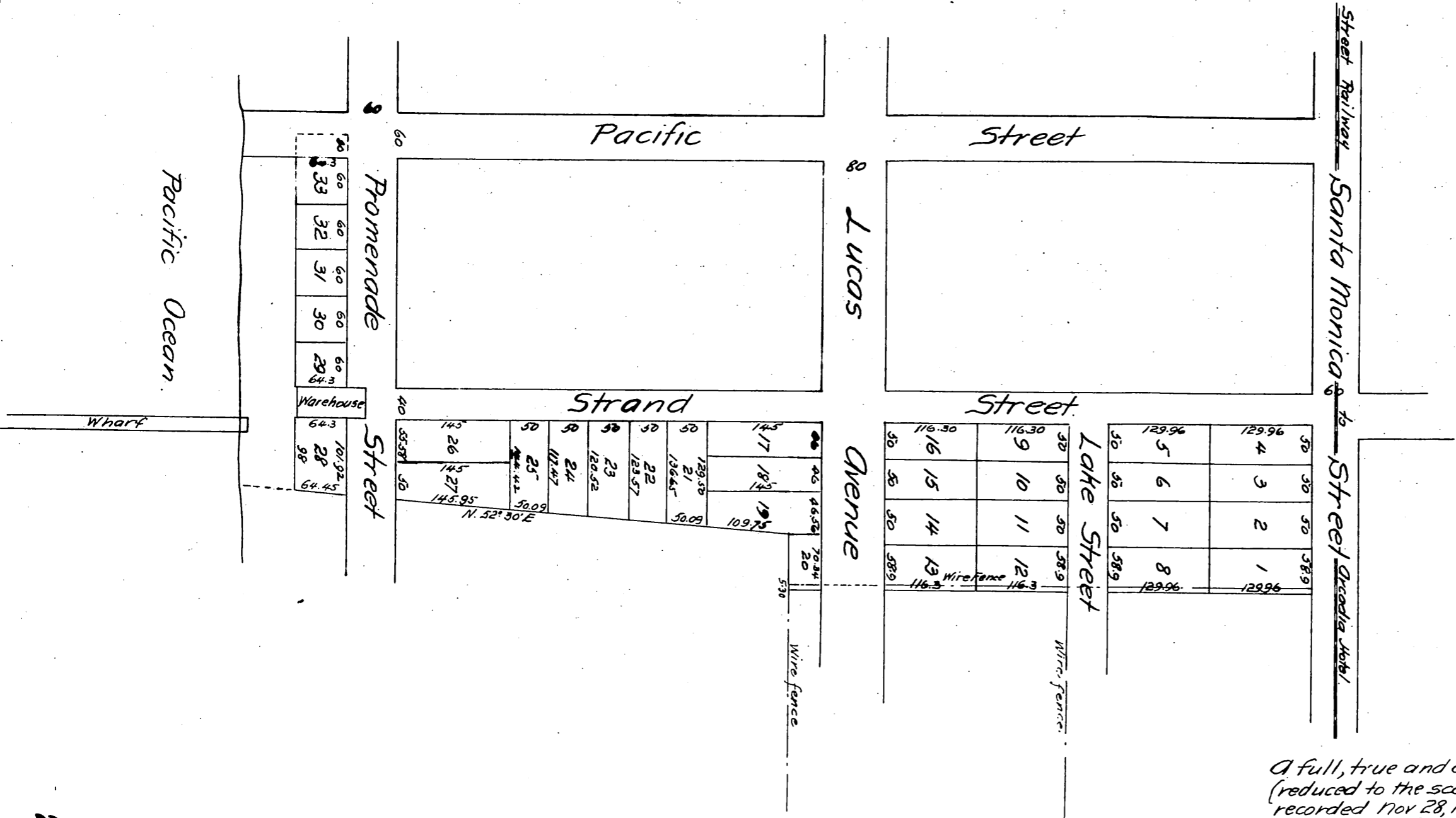


Map OF THE South Santa Monica Wharf Property

Owned by Jean Bernard

Surveyed by J.A. Bernal Sur. & C.E. August 1887.

True Courses Var. 14°30'E - Scale 100ft to 1 inch.



A full, true and correct copy of the original
(reduced to the scale of 150 feet to one inch)
recorded Nov 28, 1887 at 26 min past 10 A.M.
at request of Juan Bernard
Frank A. Gibson, County Recorder
By George Bugbee, Deputy.

56

56