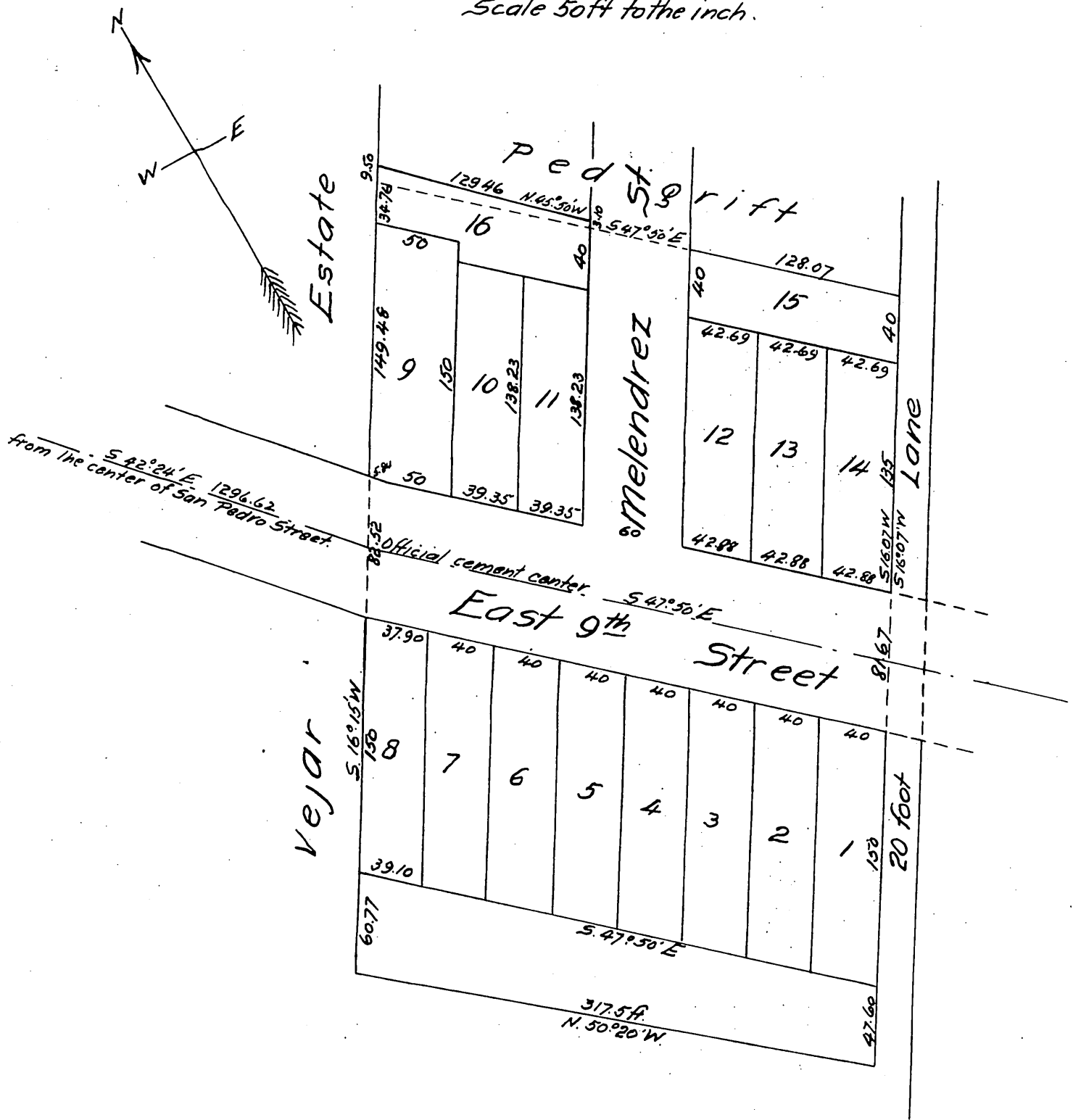


Map
OF THE
Goldsworthy 9th St. Tract
Being part of the
Melendrez De Reyas Estate
in the City of Los Angeles, Calif.

Surveyed by John Goldsworthy County Surveyor Nov. 1887.
True Courses. Var. 14°30' East.
Scale 50ft to the inch.



A full, true and correct copy of the original
(reduced to the scale of 80 feet to one inch)
recorded Nov. 29, 1887 at 56 min. past 9 O. M.
at request of John Goldsworthy.

Frank A. Gibson County Recorder.
By George Bugbee. Deputy.