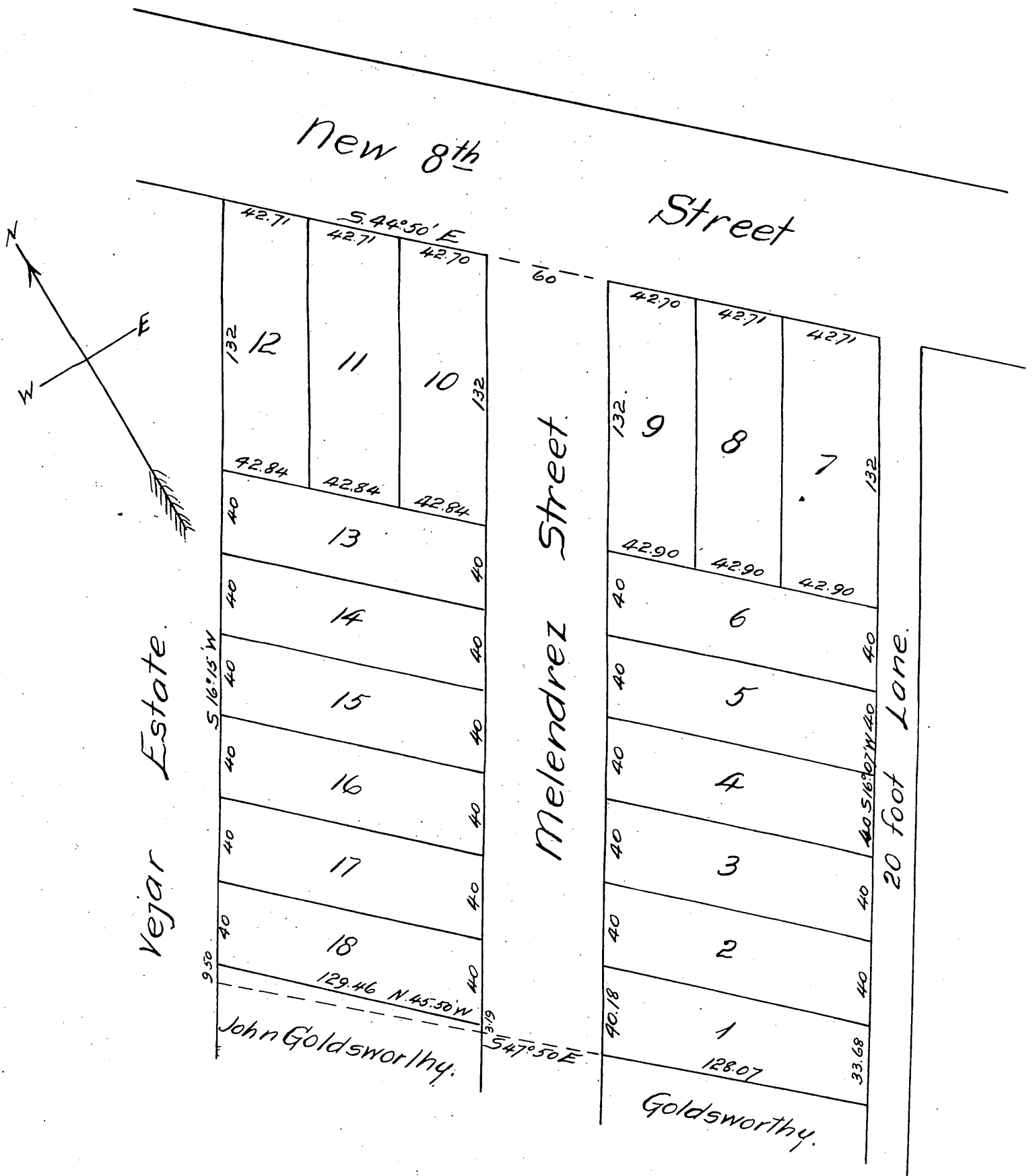


Map
OF THE
Pedgrift Tract
Being part of the Melendrez De Reyes Estate
in the City of Los Angeles, Calif.

Surveyed by John Goldsworthy Nov. 1887
True Courses Var. 14° 30' East.
Scale 50 ft to the inch.



A full, true and correct copy of the original.
(reduced to the scale of 60 feet to one inch)
recorded Nov. 29, 1887 at 57 min. past 9 A.M.
at request of Jas. Pedgrift.

Frank A. Gibson, County Recorder.
By George Bugbee, Deputy.