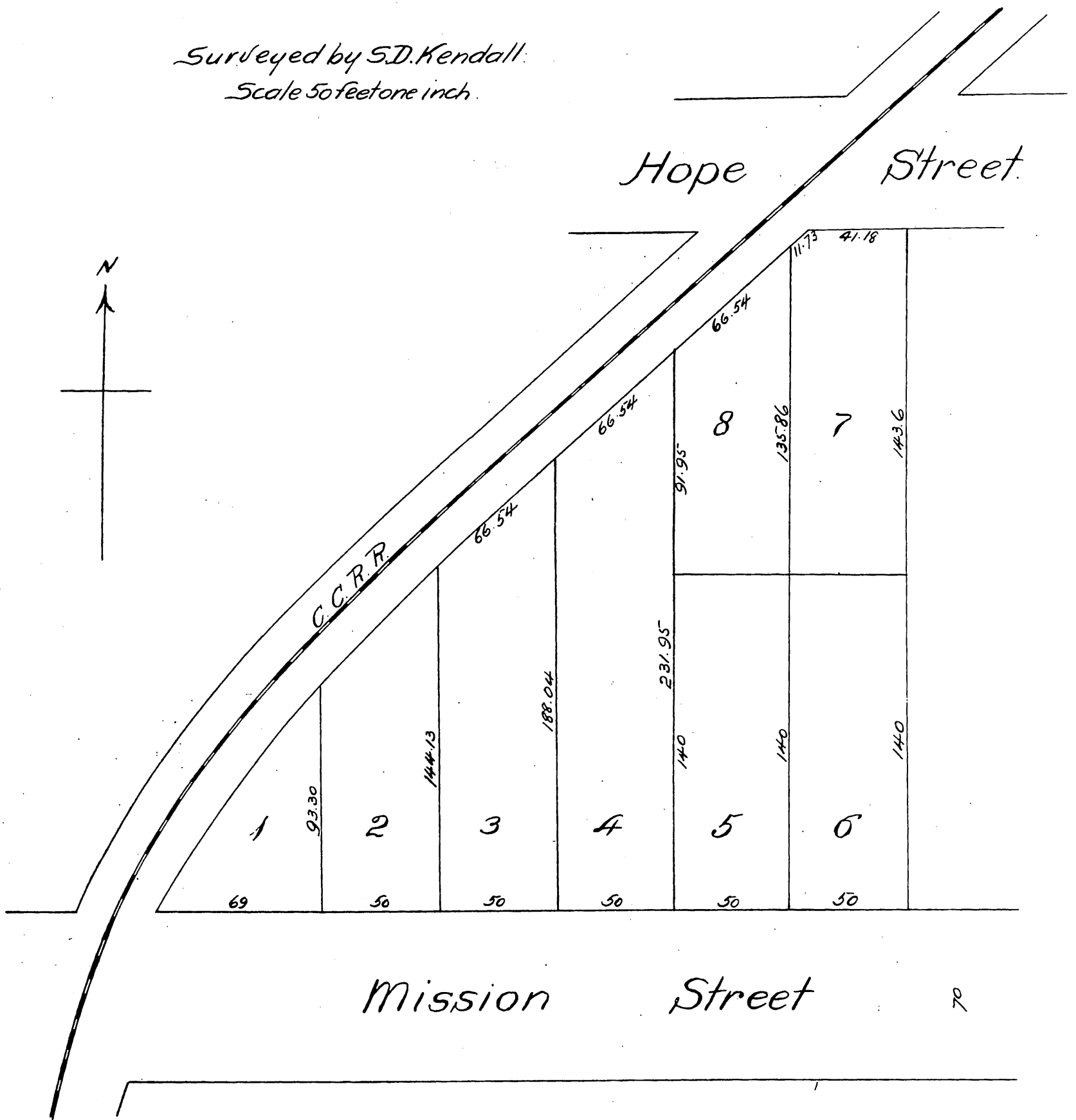




Map  
OF  
Smith & Packard's  
Subdivision of Lots 4, 5, 6, 7 and 8 in Block 2 of the  
Re Plat of the town of South Pasadena, Cala.

Surveyed by S.D. Kendall.  
Scale 50 feet one inch.



A full, true and correct copy of the original  
recorded Nov. 30, 1887 at 4 min. past 9 O. M.  
at request of F. H. Smith.  
Frank A. Gibson County Recorder.  
By George Bugbee. Deputy.