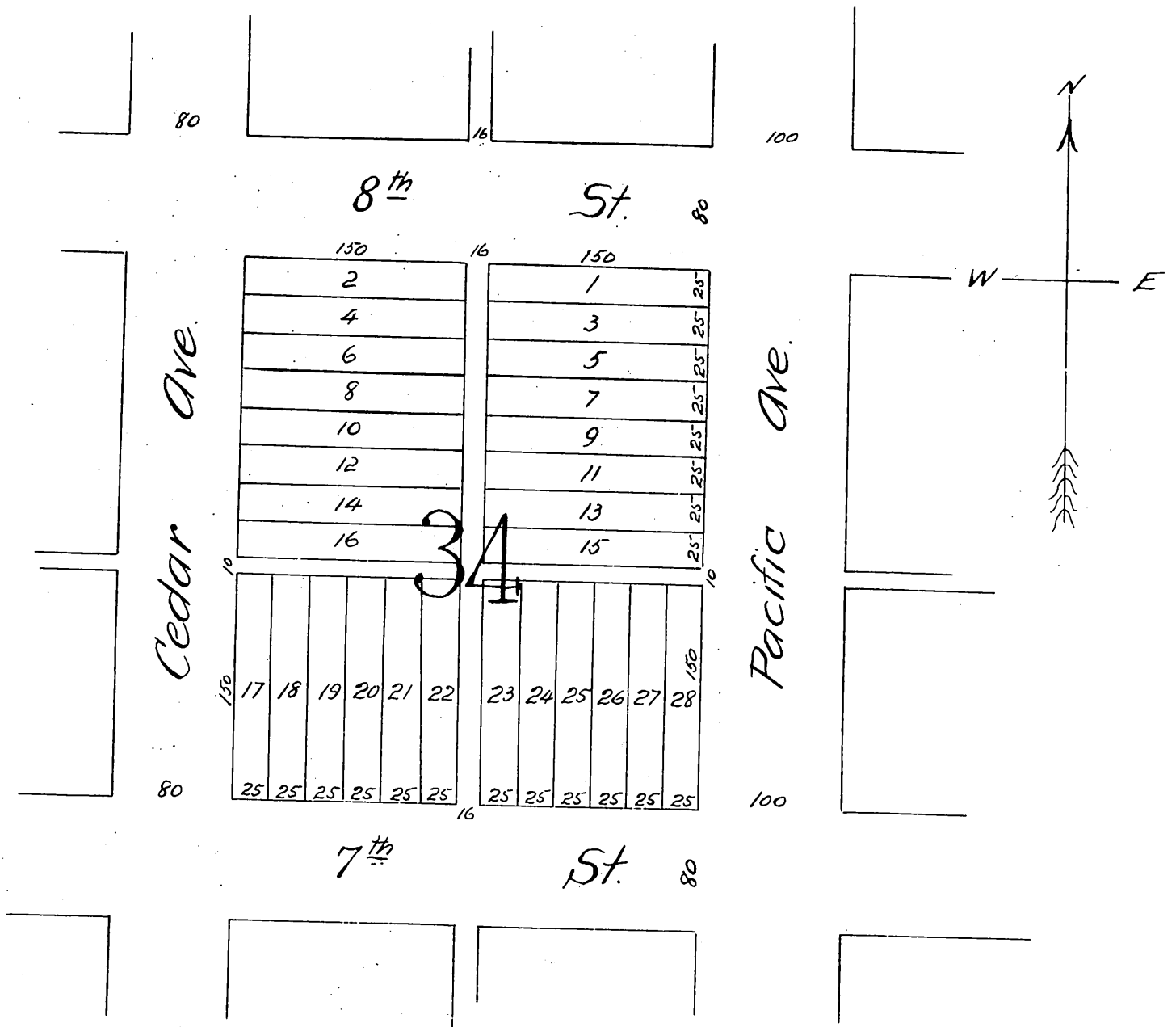


Plat  
 OF  
 Subdivision of Block 34  
 in the Town of Long Beach.  
 Los Angeles Co. Cal.

Charles T. Healey Surveyor, August 10<sup>th</sup> 1887  
 Scale 100ft to the inch.



A full, true and correct copy of the original  
 recorded Dec. 2. 1887 at 37 min past 10 A. M.  
 at request of Wm. Rommel.

Frank A. Gibson, County Recorder.  
 by George Bugbee, Deputy.