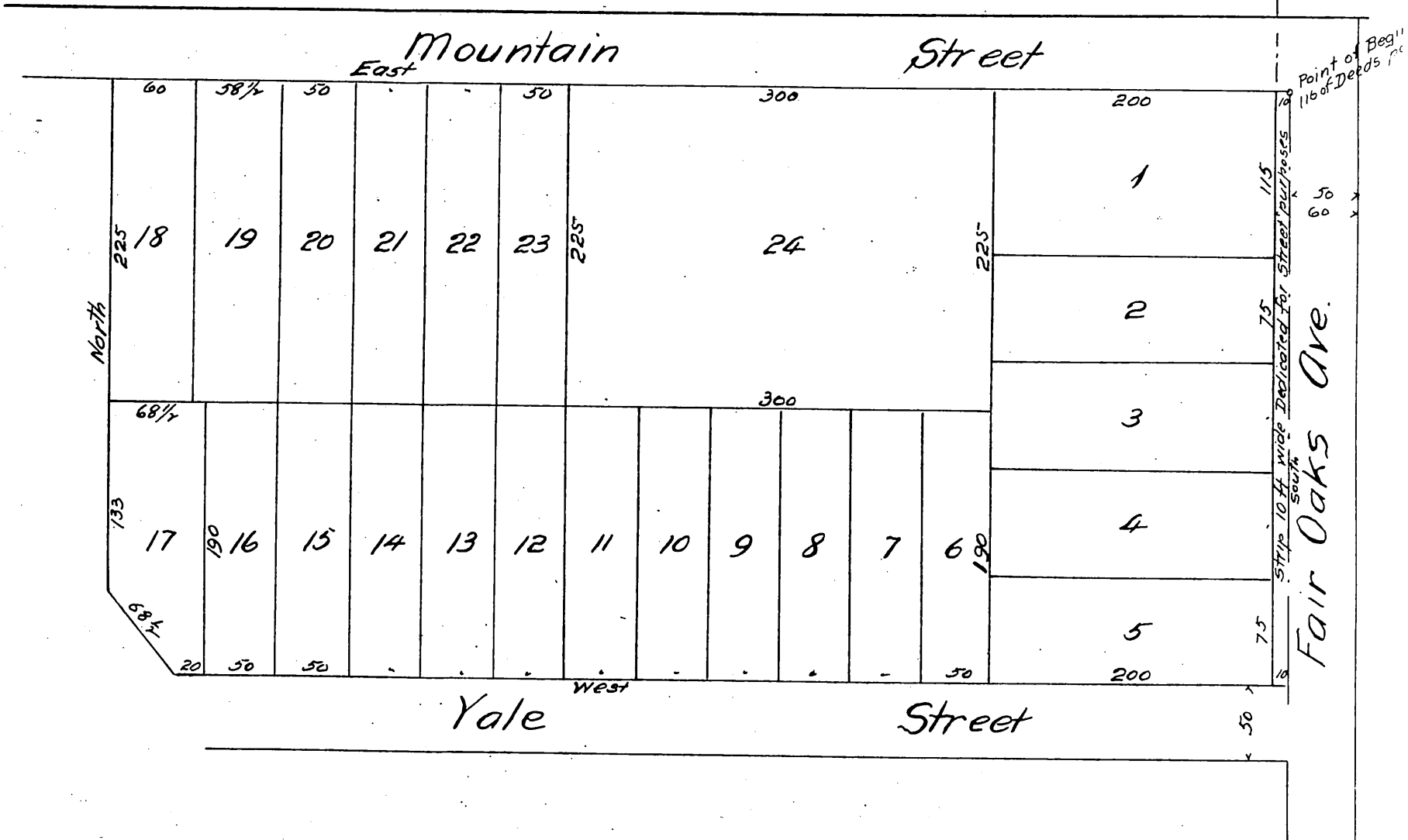


Amended
Map
OF
Amos Wright's Subdivision

Being a subdivision of a portion of Block T Painter & Ball's Addition to the City of Pasadena, Los Angeles Co Cal. and is included within the exterior boundaries of the tract of land described in the deed from J.H. Painter and B.F. Ball to Amos Wright by deed recorded in Book 116 page 410. Record of Deeds Los Angeles Co, Cal. This map is amendatory to the "Map of Amos Wright's Subdivision" as recorded in Book 13. page 78 Misc. Records. Los Angeles Co. Cal.
The lot lines are at right angles to the streets

Scale 100 ft to 1 inch.



A full, true and correct copy of the original recorded Dec. 2, 1887 at 7 min. past 11 A. M. at request of O & T. I. Co.

Frank O Gibson County Recorder.
by George Bugbee. Deputy.