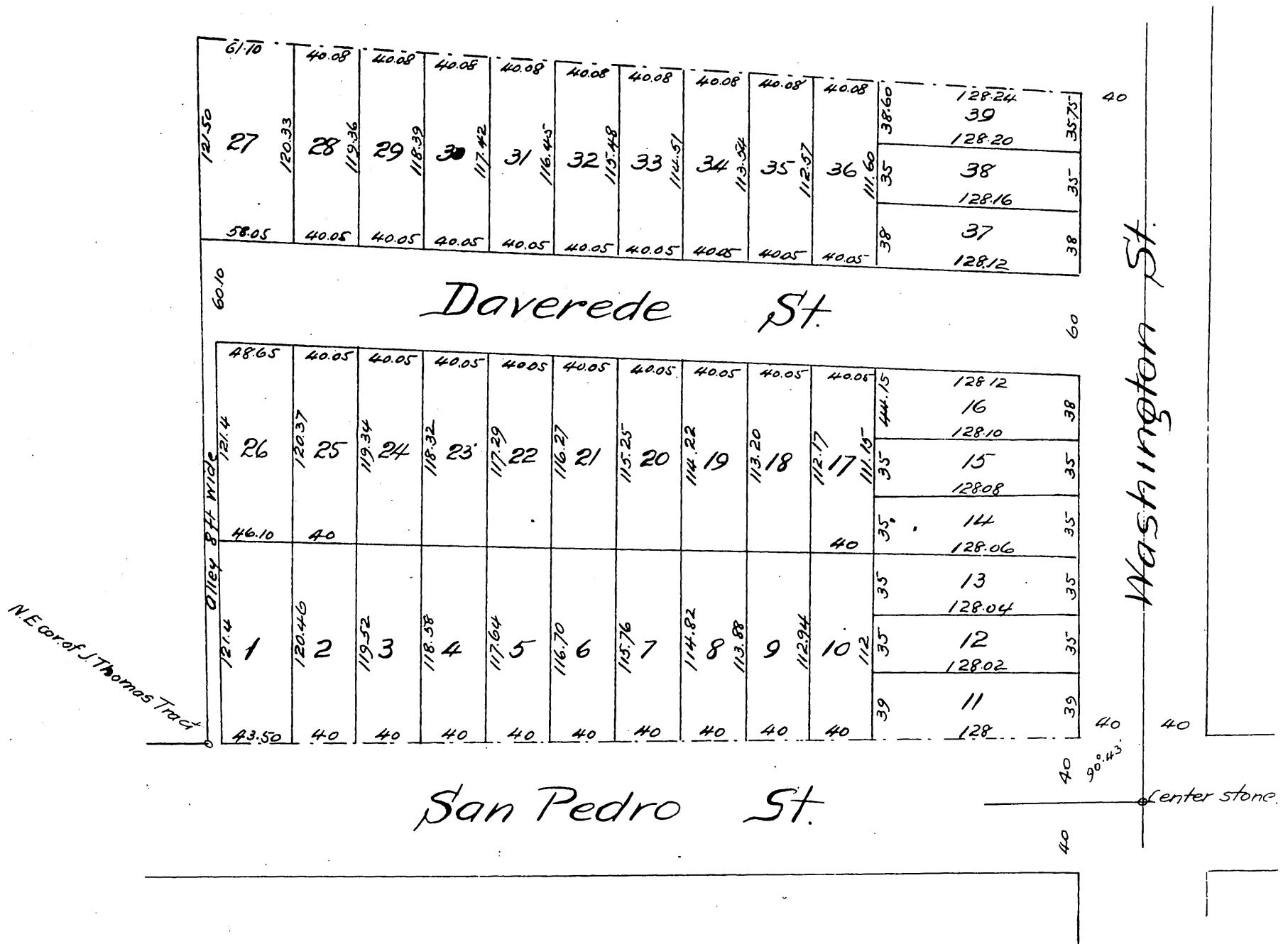


*Map*  
 Geo. W. King's Subdivision  
 OF THE  
 Daverede Tract  
 City of Los Angeles, Cal.  
 located on the S.W. corner of San Pedro and Washington Streets.

*Surveyed Sept. 1887 by V. J. Rowan Surveyor.*



*A full, true and correct copy of the original  
 (reduced to the scale of 80 feet to one inch)  
 recorded Dec. 2, 1887 at 56 min. past 2 P. M.  
 at request of Geo. W. King.*

*Frank A. Gibson, County Recorder,  
 By George Kugler, Deputy.*