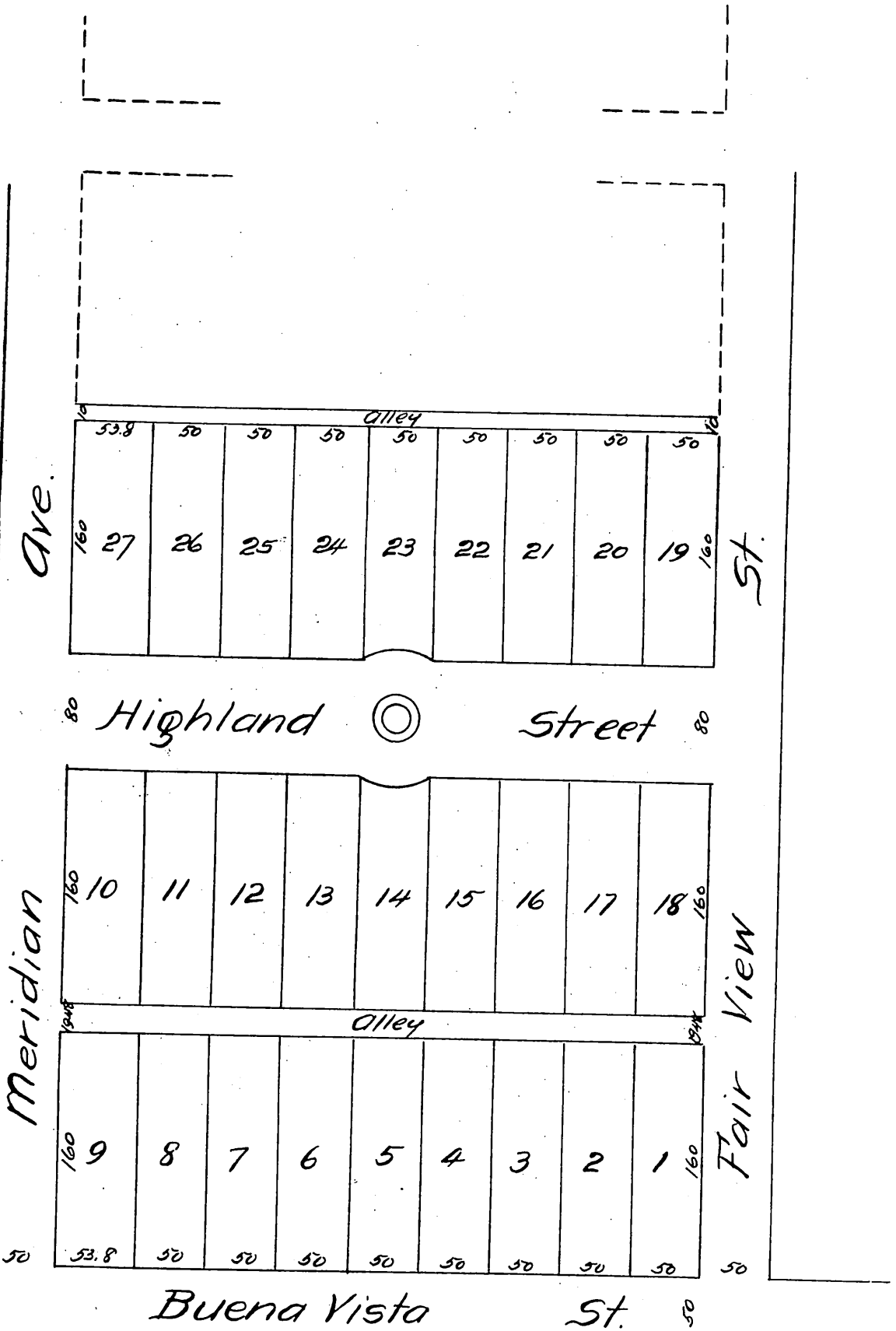


Map OF THE Highland Tract

South Pasadena, Los Angeles Co. Cal

A. R. Street Sur. Nov. 1887
Scale 50ft per inch.



A full, true and correct copy of the original
(reduced to the scale of 100 feet to one inch)
recorded Dec. 2, 1887 at 35 min. past 3 P.M.
at request of Ross Atwater & Co.

Frank A. Gibson, County Recorder.
By George Bugbee, Deputy.