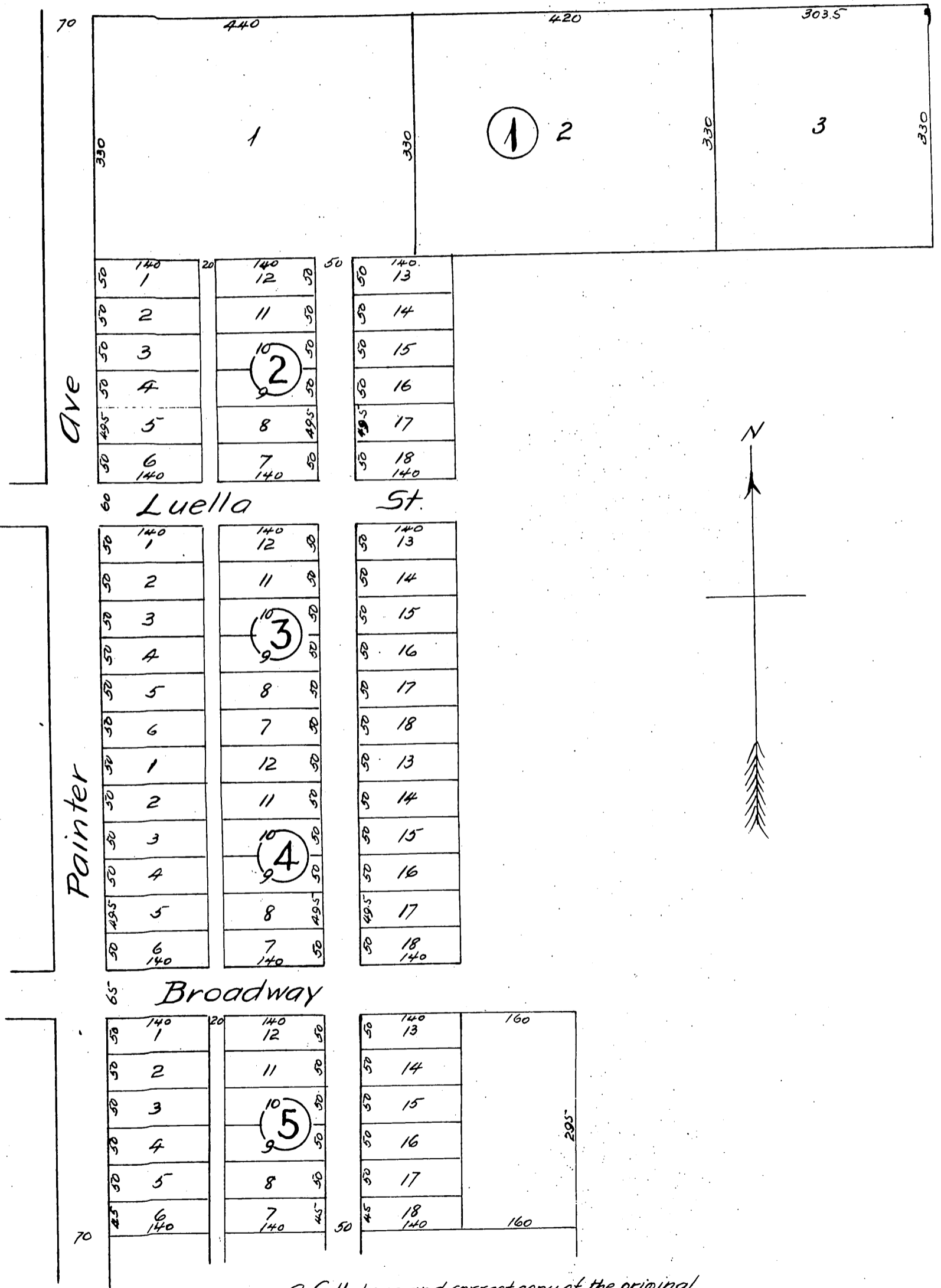


Harvey & Lindley's Addition TO Whittier.

Being a subdivision of Lots 1, 2, 3, 4, & 5, Block A,
of the Pickering Land and Water Company's Subdivision
of the John M. Thomas Ranch, Los Angeles County, Cal.

Surveyed Nov. 1887 by Jessup, Freece & Clampitt Surveyors
Scale 70 feet to 1 inch.



A full, true and correct copy of the original
(reduced to the scale of 150 feet to one inch)
recorded Dec. 5 1887 at 47 min. past 9 O. M.
at request of F. S. Elder.

Frank A. Gibson. County Recorder.
By George Bugbee. Deputy.