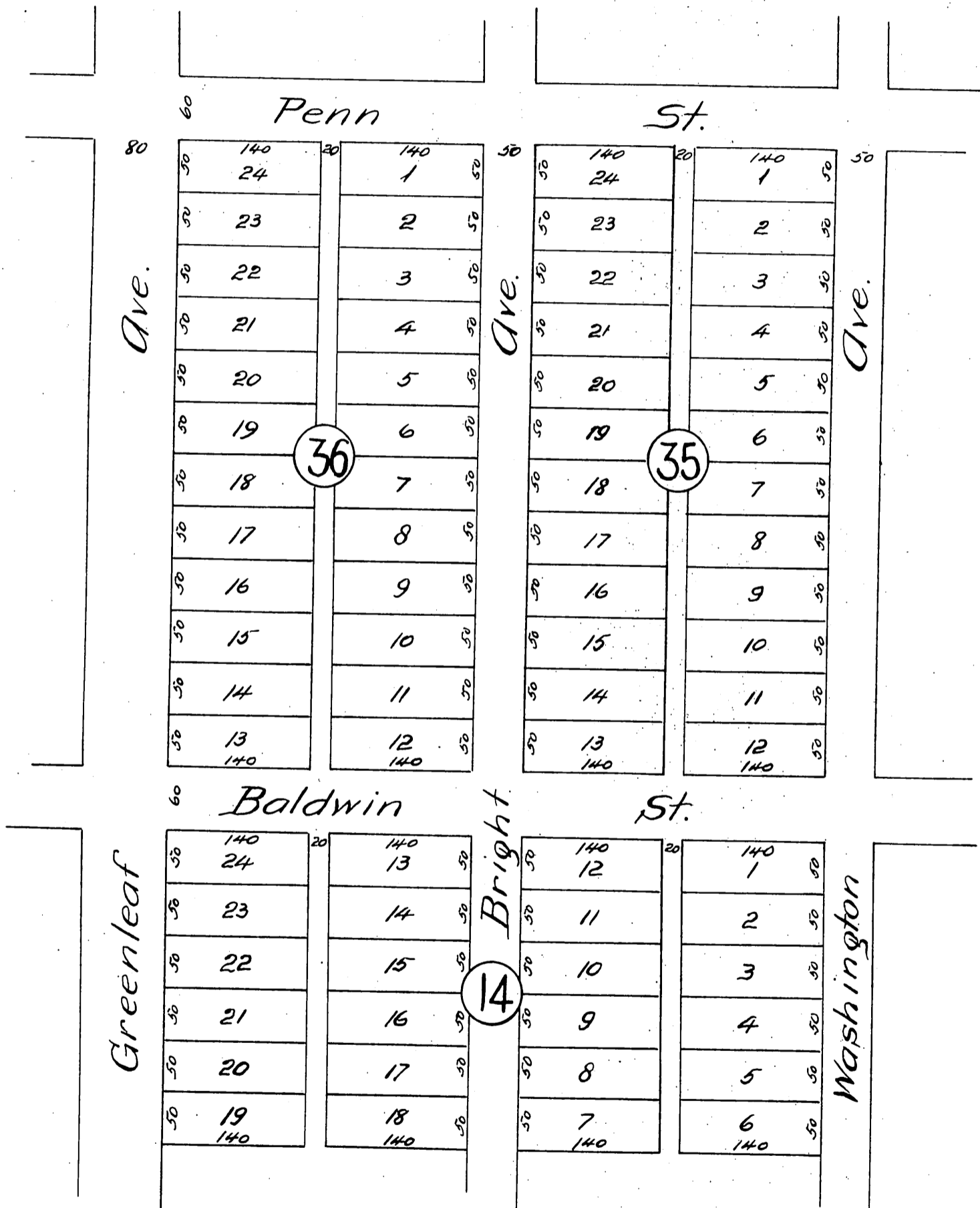


Strawbridge & Wiggins Addition TO Whittier

Being a subdivision of Lots 14, 15 and 16, Block J, of the
Pickering Land and Water Companys Subdivision
of the John M. Thomas Ranch, Los Angeles County Cal.

Surveyed Oct. 1887 by Jessup & Preece Surveyors.
Scale 70 feet to 1 inch.



A full, true and correct copy of the original
(reduced to the scale of 120 feet to one inch)
recorded Dec. 5, 1887 at 25 min. past 11 A. M.
at request of Strawbridge & Wiggins.
Frank A. Gibson, County Recorder.
By George Bugbee, Deputy.