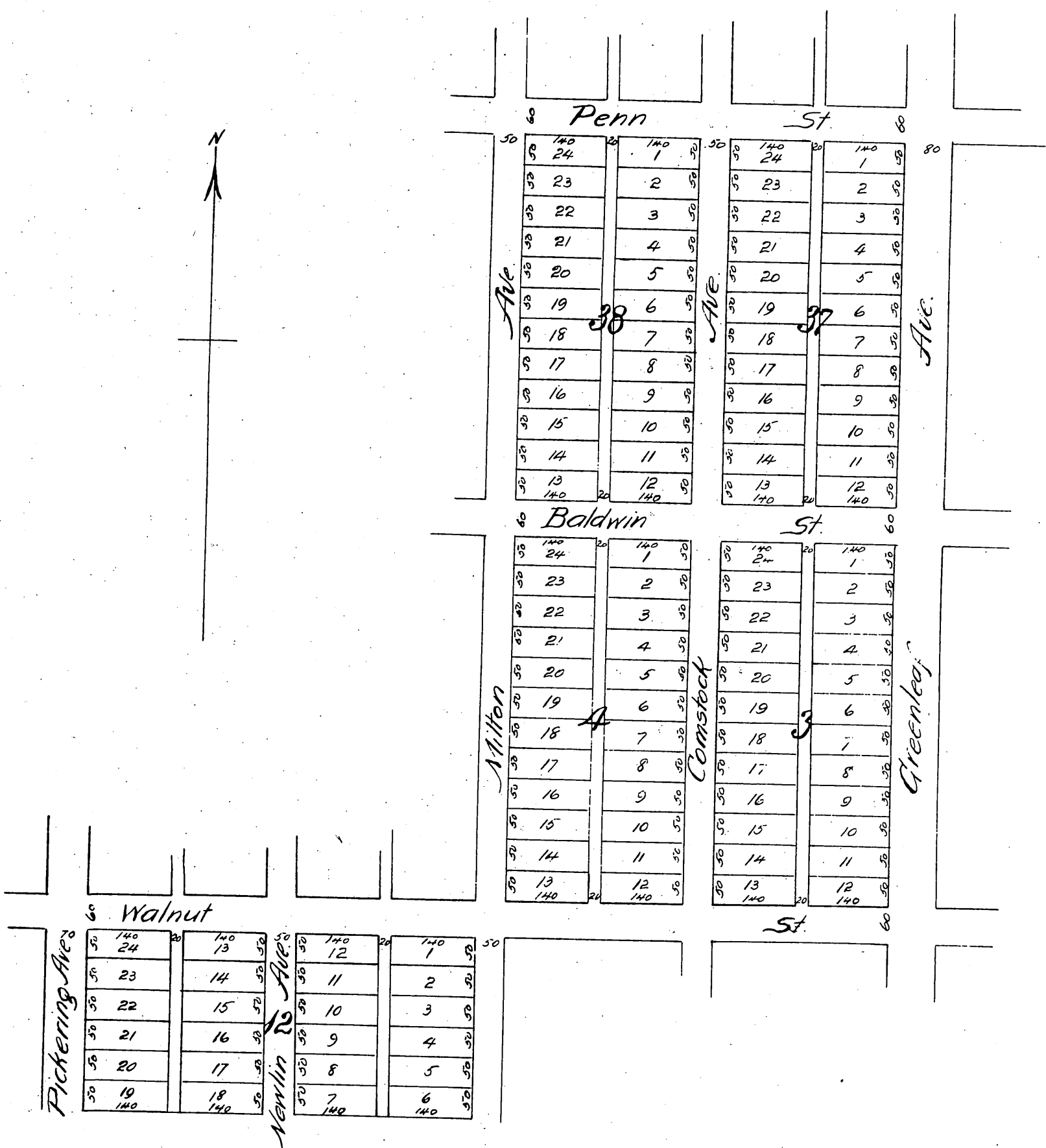


Sessions' Addition

TO
Whittier.

Being a subdivision of Lots 1, 2, 3, 4 & 12 Block K of the Pickering Land and Water Company's Subdivision of the John M. Thomas Ranch. Los Angeles County Cal.

Surveyed Oct 1887 by Jessup & Reece Surveyors
Scale 70 feet to 1 inch.



A full, true and correct copy of the original
(reduced to the scale of 200 feet to an inch) recorded
Dec. 5th 1887 at 11³⁰ A.M. at request of J. W. Sessions.
Frank A. Gibson, County Recorder.
by George Bugbee, Deputy