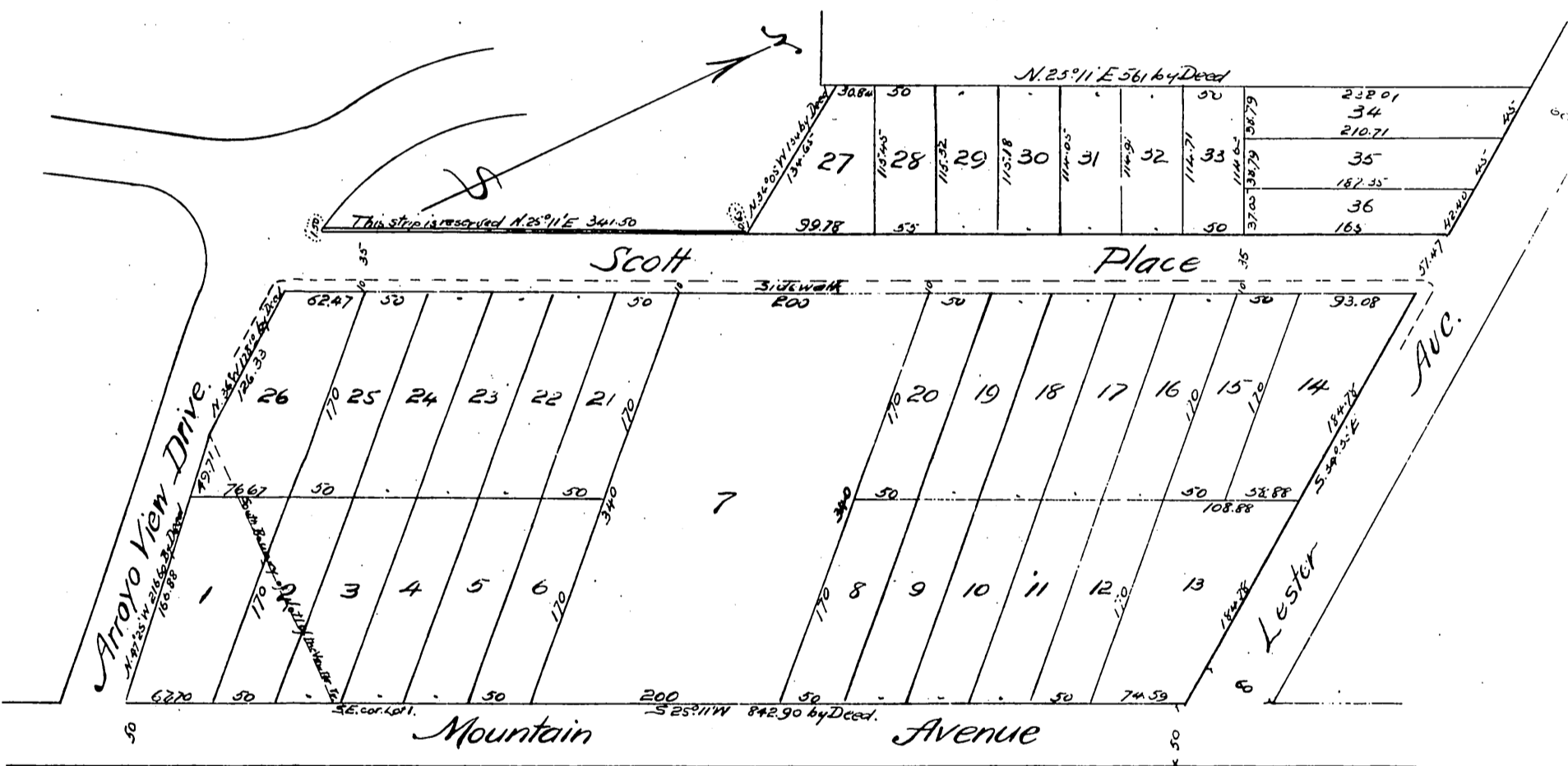




Map
of the
Scott & Skinner Subdivision
of lands in Division A
of the
San Gabriel Orange Grove Association
PASADENA, CALA.

Being a part of Lots 1 and 2 of the E. J. Vawter Tract,
and the triangular park heretofore vacated and Granted to the
Owners of said Lot 1

Surveyed Nov. 1887 by Place & Pieper Surveyors & CE's
Scale 50' = 1"



A full true and correct copy of the original (reduced
to the scale of 120 feet to an inch) recorded Dec. 5th 1887
at 2:25 P.M. at request of O.B. Skinner

Frank A. Gibson County Recorder.
by George Baybee Deputy.