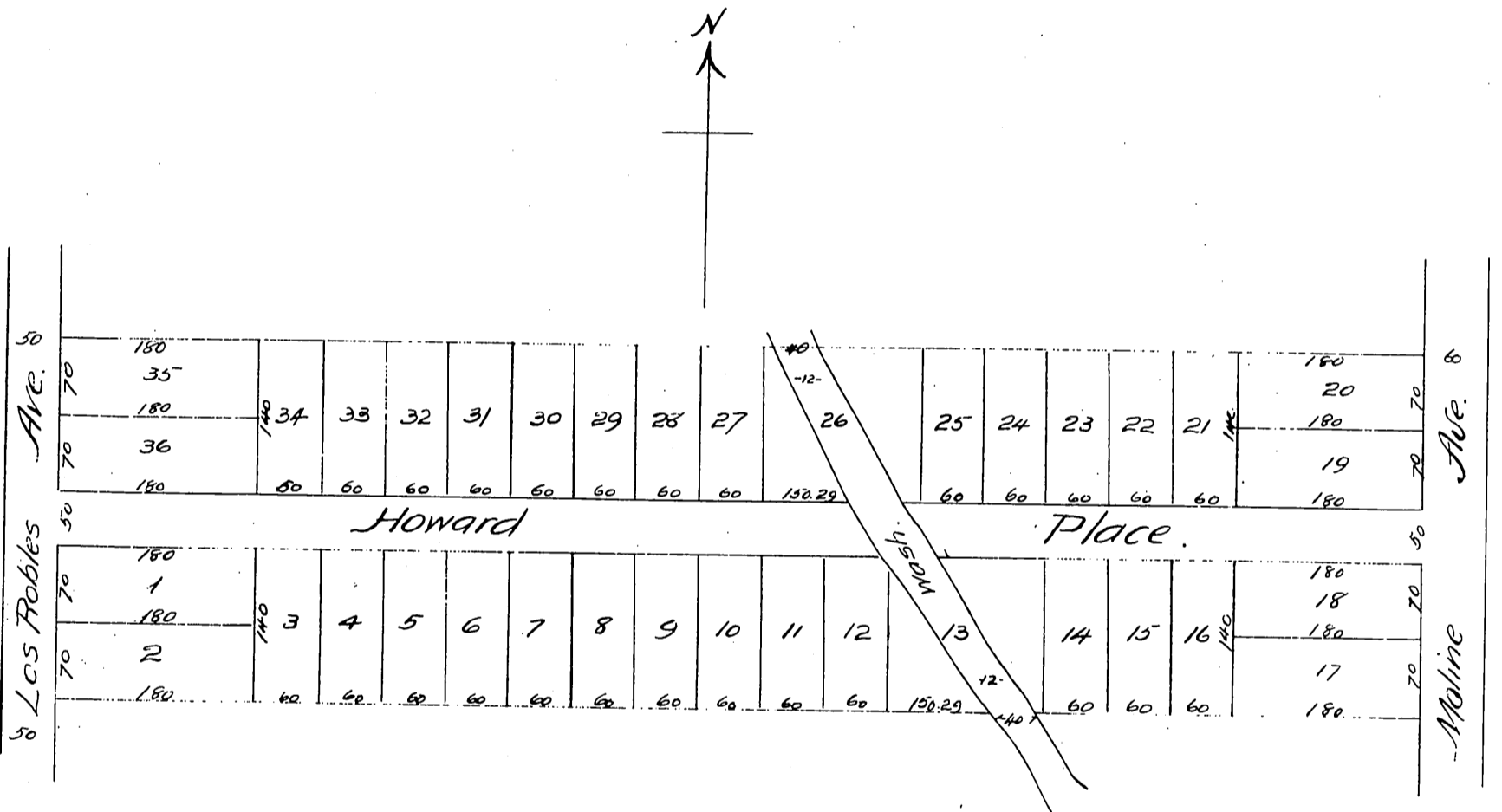


# C.A. Tebbetts Subdivision

of 10 acres in Block M. Painter & Ball Tract.  
Pasadena, California.

The S.W. corner being 990 feet North of S.W. corner of Block M.

Surveyed Nov 1887 by Jessup, Peerce & Clampitt Surveyors  
Scale 100 feet to 1 inch.



A full true and correct copy of the original (reduced to the scale of 100 feet to an inch) recorded Dec. 5<sup>th</sup> 1887 at 2:37 P.M. at request of C.A. Tebbetts.

Frank A. Gibson County Recorder  
by George Bugbee, Deputy