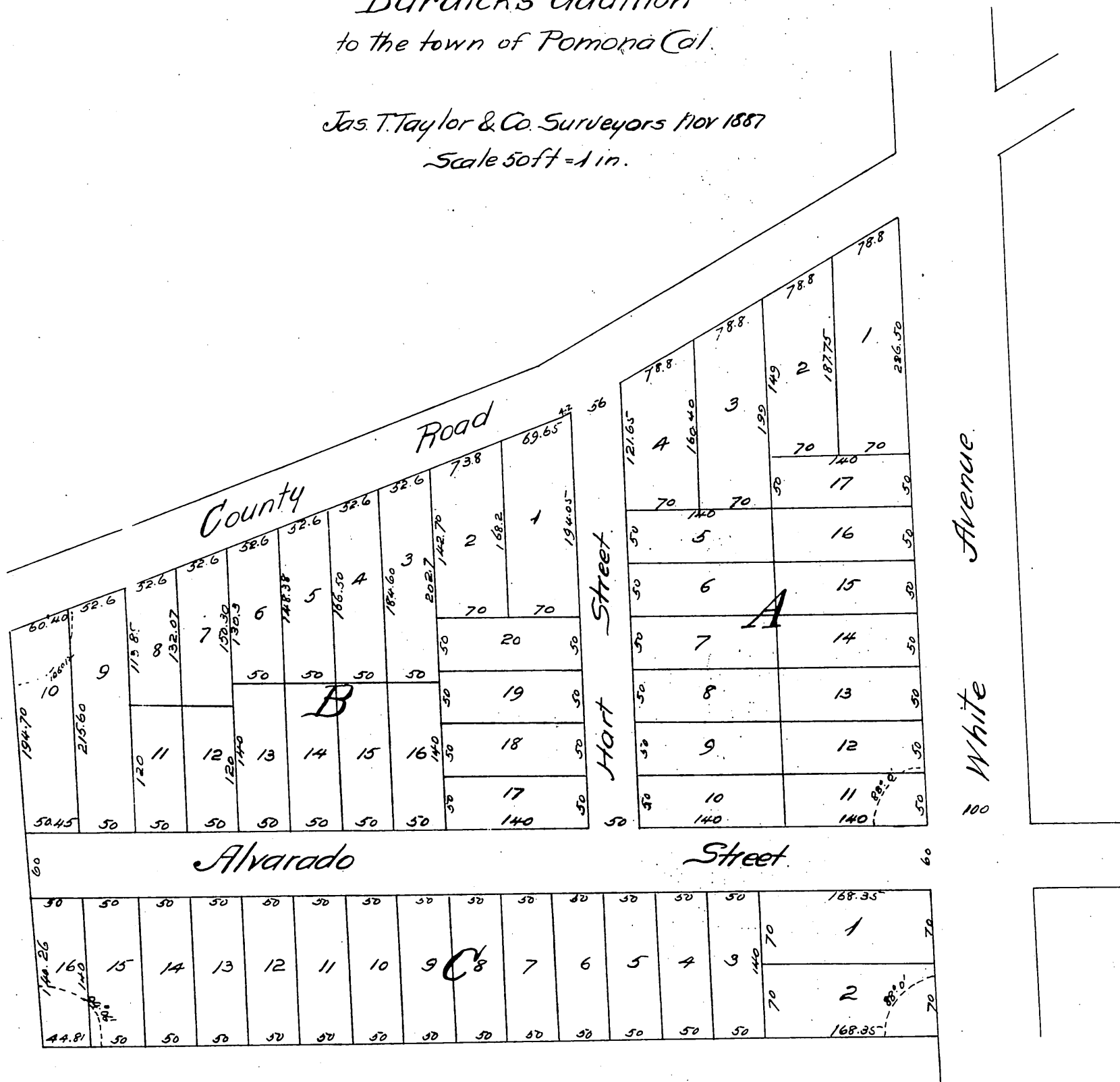


Map OF H.N. Farey's Subdivision

of Lots 1 & 2 and part of Lots 3 & 4
Burdick's Addition
to the town of Pomona Cal.

Jas. T. Taylor & Co. Surveyors Nov 1887
Scale 50ft = 1 in.



A full true and correct copy of the original (reduced to the scale of 120 feet to an inch) recorded Dec. 8th 1887 at 9:27 A.M. at request of H. N. Farey.

Frank A. Gibson County Recorder.
by George Bugbee, Deputy.