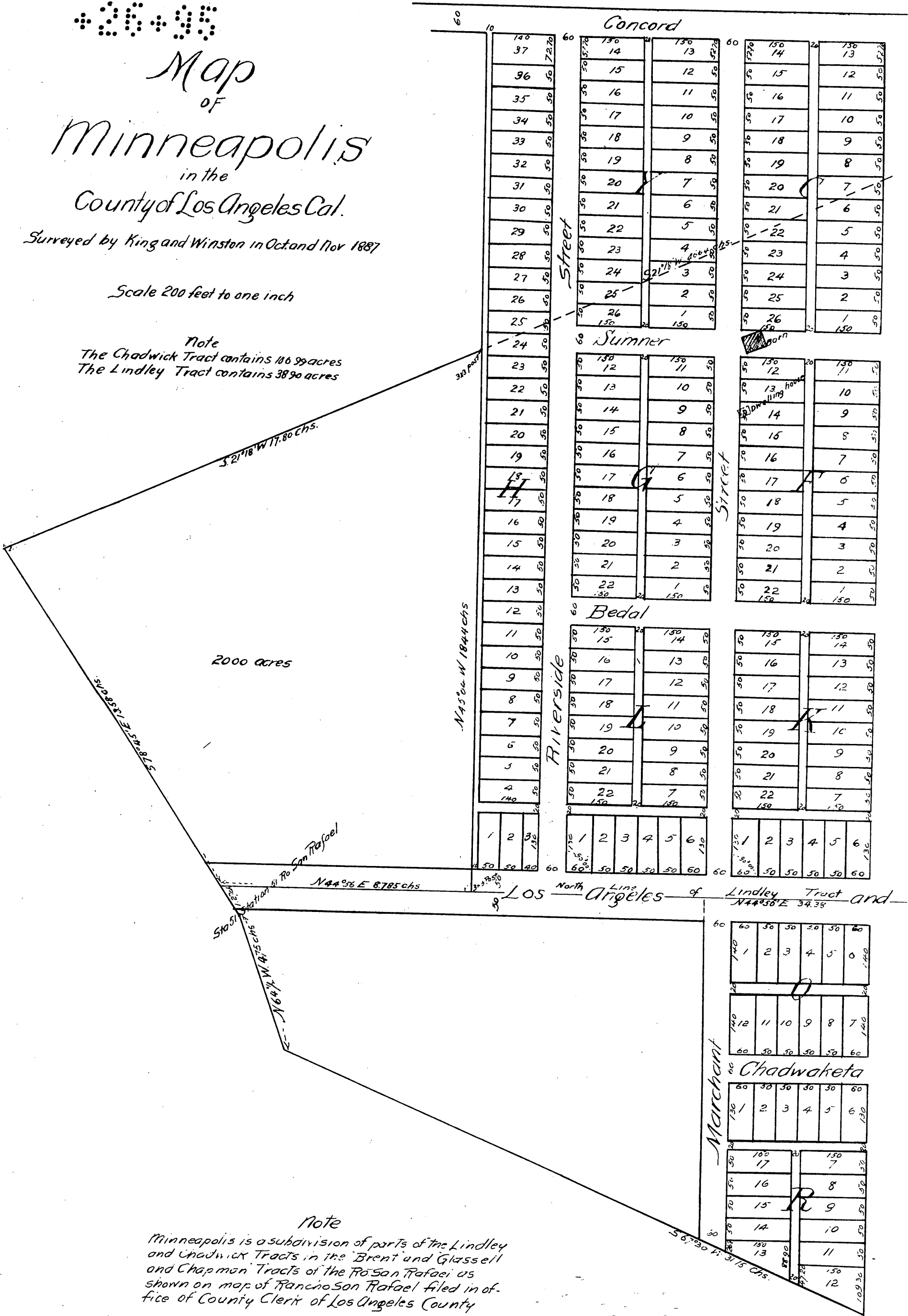


Map OF Minneapolis in the County of Los Angeles Cal.

Surveyed by King and Winston in Oct and Nov 1887

Scale 200 feet to one inch

Note
The Chadwick Tract contains 106 99 acres
The Lindley Tract contains 38 90 acres



Note
Minneapolis is a subdivision of parts of the Lindley
and Chadwick Tracts in the Brent and Glassell
and Chapman Tracts of the Rancho San Rafael as
shown on map of Rancho San Rafael filed in of-
fice of County Clerk of Los Angeles County