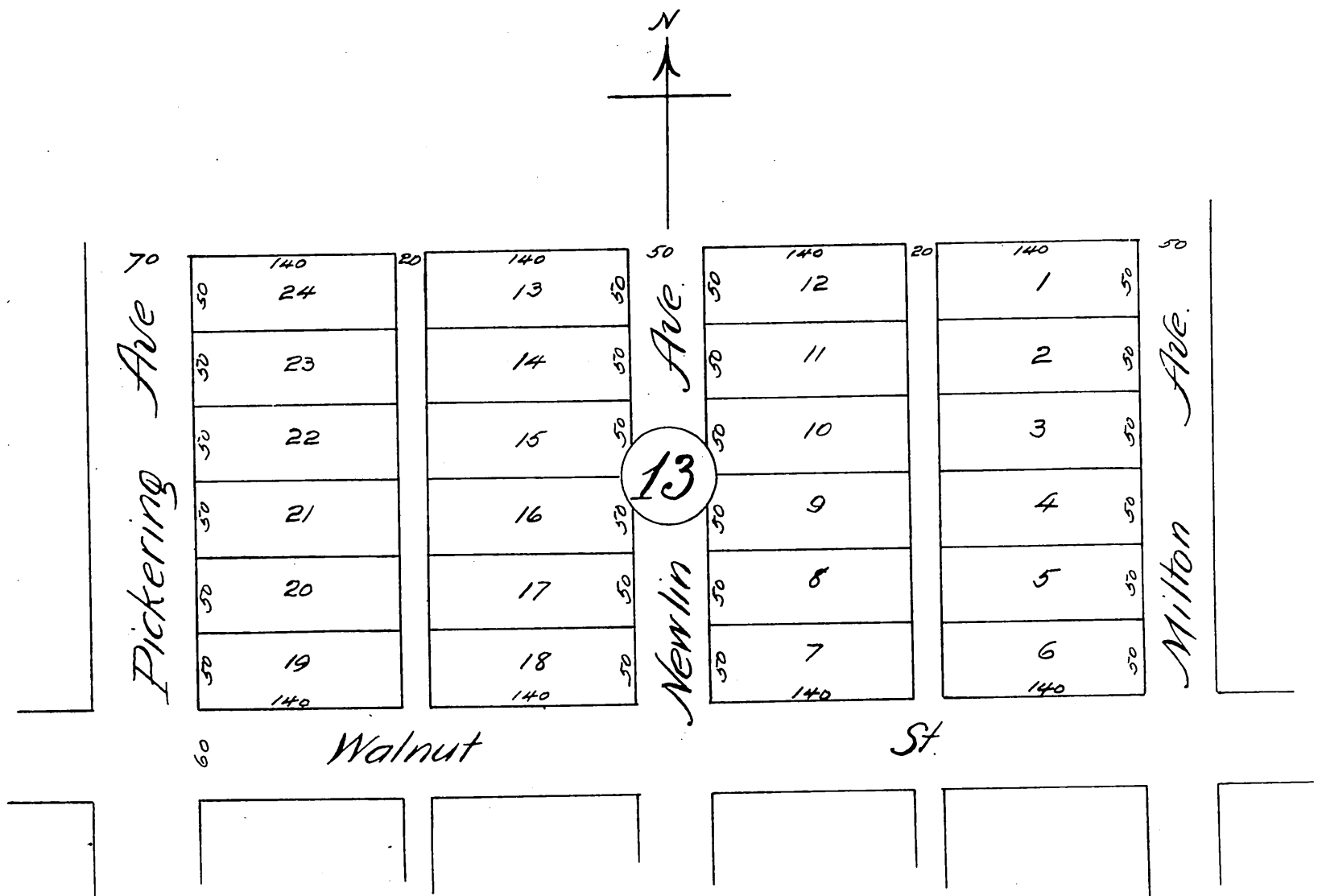


Evans' Addition to Whittier

Being a subdivision of Lot 13, Block K of the Pickering Land and Water Company's subdivision of the John M Thomas Ranch, Los Angeles County Cal.

Surveyed Nov. 1887 by Jessup, Freese & Clampitt Surveyors
Scale 70 feet to 1 inch.



A full true and correct copy of the original (reduced to the scale of 100 feet to an inch) recorded December 8th. 1887 at 2³⁰ PM at request of E. D. Evans.

Frank A. Gibson County Recorder.
by George Bugbee, Deputy.