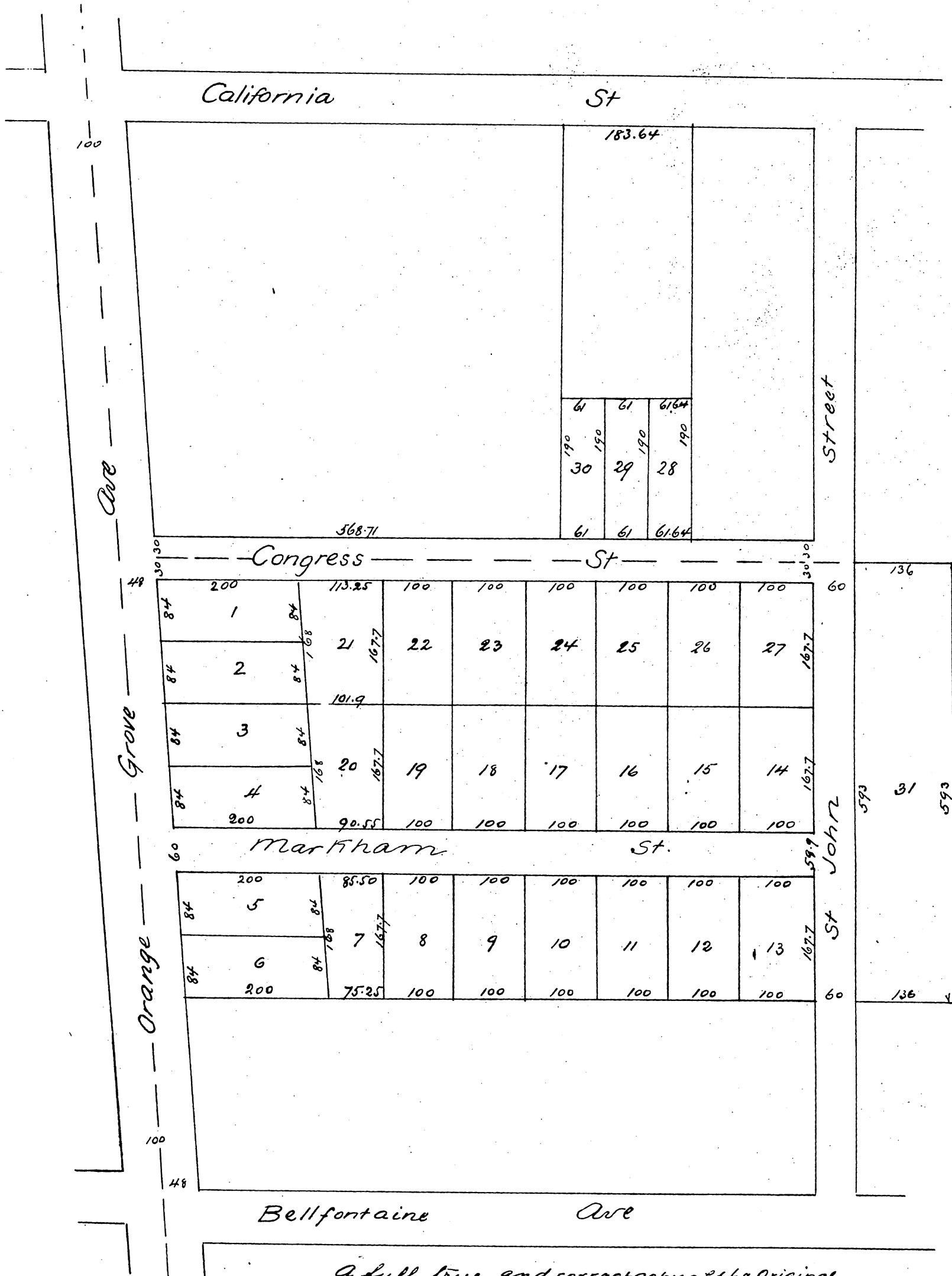




Map of Carlisle Heights

A subdivision of the west 1509 Acres of Lands marked Holmes of Division P of
the Lands of the S.G.O.G. Also a subdivision of part of the Presbyterian Church lot
Pasadena Cal.

Surveyed by J. M. Willard July 1887
Scale 100 feet = 1 inch



A full true and correct copy of the Original
(reduced to the scale of 150 ft to one inch) recorded
December 12th 1887 at 3:27 P.M. at request of Geo. W. Stimson
Frank A. Gibson County Recorder
By Wm. E. Johnston Dep.