

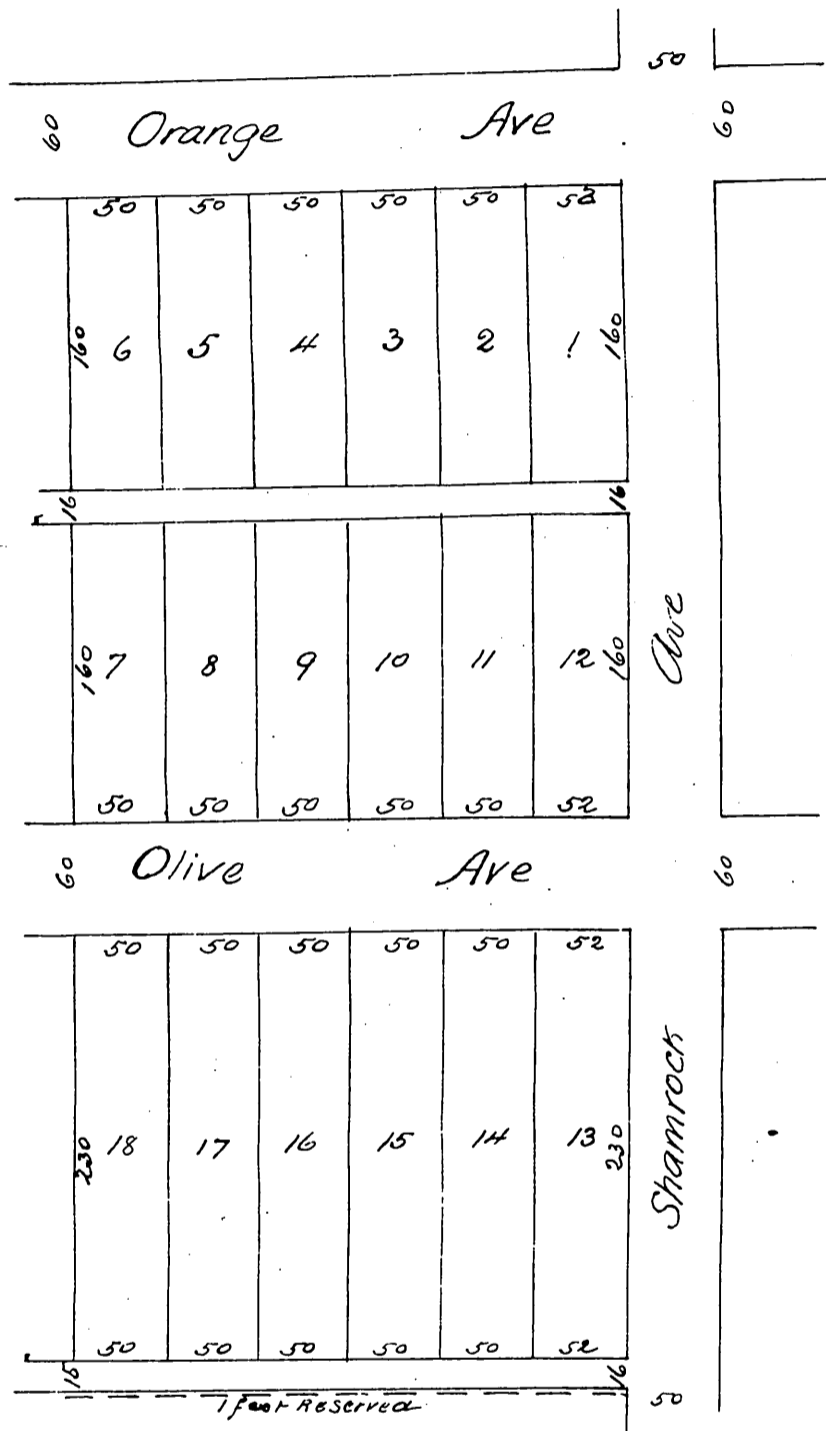
0014

J.A.C. Subdivision of Lot A BK 17

Monrovia L.A. Co. Cal

Surveyed by Charters and McDonald Monrovia
Scale 100ft = 1 inch

7



A full, true and correct copy of the original
recorded December 13th 1887 at 12 P.M.
at request of L. J. Wilde

Frank A. Gibson County Recorder
by Wm. E. Johnston Deputy